

# Year 11 Information and Guidance Evening





# Welcome

**Mr T Scott**

*Head of Year 11*

**After this week there are around 130 school days  
until the exams start!!**

**Exam season will be here before you know it**

**The first step to a successful year is ensuring  
your child has fantastic attendance**

# TONIGHT

**Communication & Wellbeing  
GCSE English & Maths  
Controlled Assessments, Key Dates &  
Exams  
Assessment & Reporting in Year 11  
Post-16 study & advice  
Revision  
Opportunities**

# Lymm High School Sixth Form

**Mrs H Edwards**

*Head of Sixth Form*



# Lymm High School Sixth Form

General introduction to Sixth Form given to all students last term

Why us?

- Natural progression
- Courses on offer
- Enrichment opportunities
- Leadership opportunities
- Extra-curricular
- Familiar and supportive environment
- Excellent results
- The Gateway Programme
- Intensive support





# How is it different?

Treated as a young adult

Greater degree of independence with intensive support

Study periods

Supervised study sessions

Managing their own time

Opportunity to take on positions of responsibility

Be involved in a variety of enrichment activities and have a full student experience

Remain in a supportive and caring community

where students are pushed to achieve their very best



# Admissions Timeline

Thursday 10<sup>th</sup> November 2016 – 6<sup>th</sup> Form Open Evening

Priority Application Forms

Admissions 2017 Process goes live!

Interviews after February Half Term

Careers guidance appointments arranged by Head of Year/Student Services



# Next Steps?

Talk to current Year 12 students and staff members  
Research University courses to make informed  
decisions

Attend Sixth Form Open Evening on 10th November  
2016

Visit our website for more information [http://  
www.lymmhigh6thform.org.uk/](http://www.lymmhigh6thform.org.uk/)

Follow us on Twitter @lymmhigh6thform





# COMMUNICATION

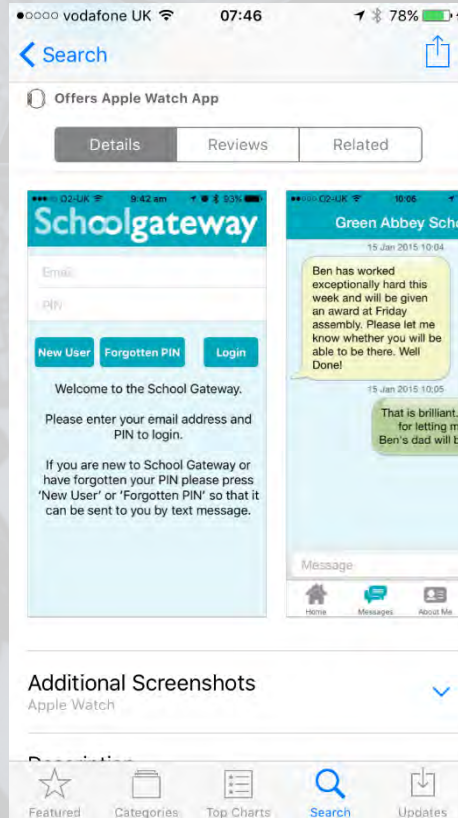
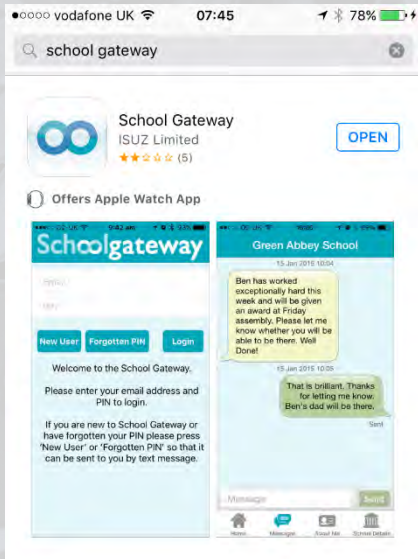
*Mrs. H Ryles-Dean*

Assistant Headteacher in charge of  
Behaviour and Safety



# COMMUNICATION

## School Gateway App



Lynn High School, Oughlington Lane,  
Lynn, Cheshire, WA13 9JH  
Tel: 01225 255426 Email: info@lynnhigh.org.uk  
Week Commencing: Monday 5<sup>th</sup> September 2016  
Timetable Week A

### HEADTEACHER'S WEEKLY BULLETIN

Dear parents and carers,

I hope you have all had a lovely summer.

It has been lovely to see all the students again and to feel the sense of excitement about what lies ahead this year. It has been especially nice to be able to welcome new Year 7 students and we wish them all the very best for the year ahead. As ever, please do not hesitate to get in touch if you have any questions or concerns.

I gave a series of assemblies to all students on Monday and my central message was again about challenge and expectations. I have asked teachers to expect even more of our incredible young people and encouraged the students to push themselves out of their comfort zone more consistently. Last year, we worked hard to significantly raise expectations around things like behaviour, homework, and work-rate in lessons and the students rose magnificently to that challenge. I am convinced that we still have even more potential to realise and, with continued partnership between teachers, parents and students, will continue to make great strides.

### EXAM SUCCESS

We start the year in a very positive frame of mind. Lots of progress was made in many areas last year and it felt as if the school was moving forwards rapidly but, of course, we were looking for a strong set of exam results in the summer to underline that progress. We certainly achieved that and are extremely pleased with the outcomes. More details about our GCSE results can be read by clicking here and to read about our 'A' level results click here. Once again, I'd like to congratulate the students on their excellent performances and thank teachers and parents for their hard work and support.



### UNIFORM

You will recall that I wrote to all parents and carers last term about uniform and, in particular, the length of girls' skirts. We have been reminding girls this week that where skirts are too short (perhaps because girls have grown over the summer), new ones will need to be bought. From the week after next, we will start enforcing the rules using the sanctions set out in the school behaviour policy. In the meantime, there remains no excuse for girls rolling their skirts up.

As ever, the intention is merely to help everyone focus on our core business of teaching and learning by ensuring clarity and consistency as regards uniform. We also hope that it helps you as parents to know that you are not alone in holding the line when faced with a teenage daughter trying to tell you that 'everybody else wears short skirts!' Thank you in anticipation of your support.



### FOUNDERS DAY

Towards the end of last term, we celebrated our Founder's Day with a sponsored walk, carnival and many activities whereby students went out into the community to help local people and organisations. We are delighted to report that we raised a total of £6,618.27, which has been donated to Ashwin and Claire House Children's Hospice. Ashwin received a total of £1,350.00 and a fantastic £5,258.97 was sent to Claire House Children's Hospice.



### CATERING

A reminder that our catering system is entirely cashless and students should not bring cash into school. Accounts can be topped up online via Parentpay. If you need your log on details or any other assistance with Parentpay, please contact Ms Annabel Ralph. Email: enquiries@lynnhigh.org.uk. For those students in receipt of free school meals, please note that your account will be credited for lunchtime only each day.

#### UPCOMING IMPORTANT DATES

- Wednesday 9<sup>th</sup> September 2016  
Sixth Form IAG Evening
- Monday 12<sup>th</sup> - Friday 16<sup>th</sup> September 2016  
Year 7 CAT Tests
- Thursday 15<sup>th</sup> September 2016  
Year 7 IAG Evening
- Thursday 22<sup>nd</sup> September 2016  
Year 10 IAG Evening

#### SCHOOL GATEWAY APP

Following trials last term, we are delighted to announce the launch of our 'School Gateway App'. Once downloaded, this will allow parents to view important information, including information on rewards and sanctions, timetables and reports. It may also make it easier for you to access messages from school. As you know, we are trying hard to improve communication with parents and we hope the launch of this app helps.

For details of how to download and use the app, please click here.

If you have any feedback (positive or negative) please do let us know via [info@lynnhigh.org.uk](mailto:info@lynnhigh.org.uk)

If you have any technical problems, please contact our ICT support team [appsupport@lynnhigh.org.uk](mailto:appsupport@lynnhigh.org.uk)



#### SCHOOL WEBSITE

This week, we are also launching an updated version of our school website. The most significant change is that it ought to be a lot easier to read on smartphones and tablet devices, but we think it is a little easier to navigate and has a nice all-round feel. Again, please let us have any comments via [info@lynnhigh.org.uk](mailto:info@lynnhigh.org.uk)

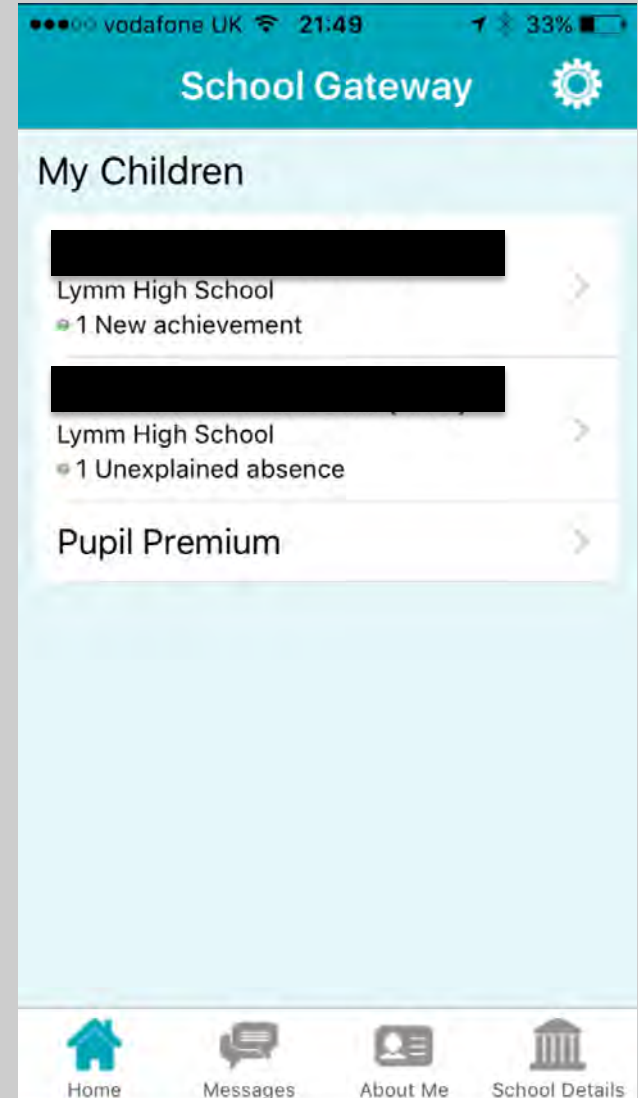


# Schoolgateway

# COMMUNICATION

If you have more than one child at school, each child will have their own unique area on the app, so you will be able to view details for each child separately.

**Schoolgateway**



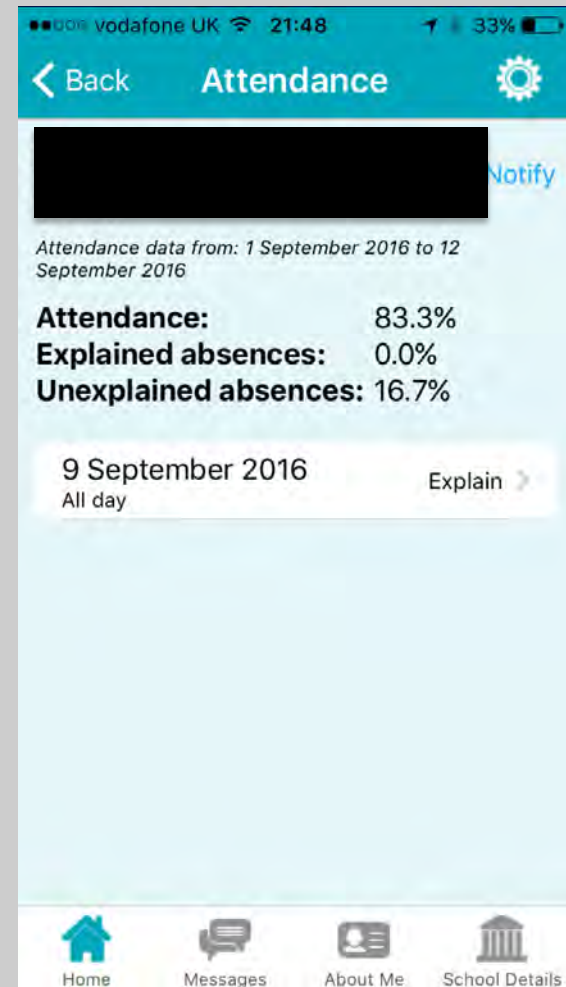


# COMMUNICATION

## Attendance

View your child's current attendance, including explained and unexplained absences as a percentage

**Schoolgateway**



Please note: Attendance data is uploaded at 6pm at the end of each day.

# COMMUNICATION

## Attendance

Allows you to...

Inform us if your child is due to be absent and the reason why

Inform us of the reason why your child has been absent previously



**Schoolgateway**



# COMMUNICATION

## Timetable

View your child's timetable, including subject, teacher, room, group and timings of the lesson

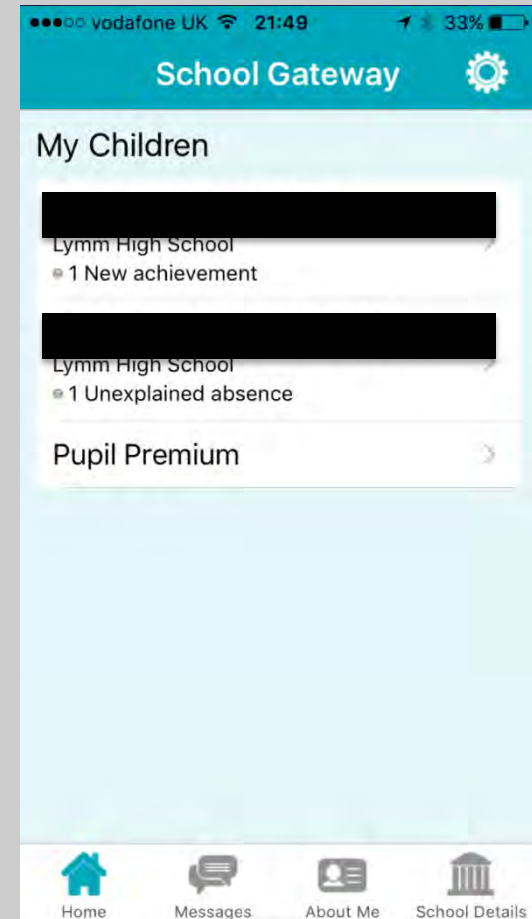


Monday, 12 September 2016		
French		08:45
A Forbes		L201
2Mon:1		9X/Fr1
English		09:45
C Cawley		A210
2Mon:2		91P/En
Mathematics		11:15
S Martin		E103
2Mon:3		9X2A/Ma
Science		12:15

**Schoolgateway**

# COMMUNICATION

The App allows you to monitor the conduct of your child whilst at school



Schoolgateway

# BEHAVIOUR

All members of our community have the right to learn – anyone who disrupts the learning of others or behaves in a way which is disrespectful, stops other being safe, healthy or enjoying school can expect to receive a consequence.

**‘Students determine the consequences by their choice of action’**

**Schoolgateway**

BFL Grade	Description
1	<p>Outstanding Behaviour</p> <p>Pupils make every effort to ensure others can learn.</p> <p>Pupils actively engage in the lesson, often exceeding expectations.</p> <p>Pupils self-manage their behaviour and actively support their peers.</p> <p>Pupils are aware of safety and actively manage the safety of others.</p>
2	<p>Good - Minimum Expectation</p> <p>Pupils show respect and dignity to staff and pupils.</p> <p>Pupils follow instructions quickly, without question.</p> <p>Pupils are polite and show responsibility for their own behaviour.</p> <p>Time is used productively within the lesson.</p> <p>Pupils are aware of the health and safety of others.</p>
3	<p>Class Teacher Detention</p> <p>Low level disruption.</p> <p>Minimum behaviour expectations are not met.</p> <p>Time is wasted as a result of being off task.</p> <p>Any warnings given are not acted upon.</p> <p>Pupils lack attention and focus is easily lost.</p> <p>Pupils are slow to respond to instructions.</p> <p>Respect towards others is not evident.</p> <p>Homework is not to the required standard.</p>
4	<p>Whole School Detention</p> <p>Student is exited to good neighbour.</p> <p>Failure to attend class teacher detention</p>
5	<p>Isolation</p> <p>Refusal to comply – On Call.</p>

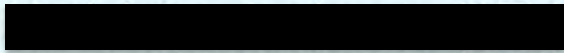
# COMMUNICATION

## Behaviour

If your child receives a Behaviour For Learning grade 3 or 4, this will be updated on the app at 3:30pm each day, with the reason, sanction and the class in which they received it.

In the first instance we suggest you discuss the BFL grade with your child, and if you are still concerned you can contact the relevant Head of faculty





Behaviour details from: 1 September 2016 to 12 September 2016

**Total points:** 4

BFL Grade 3 - Equipment, teacher detention 1 point >  
12 September 2016

BFL Grade 4 - Persistent Disruption - Exited 40min DT 1 point >  
12 September 2016

BFL Grade 3 - Homework, teacher detention 1 point >  
12 September 2016

BFL Grade 4 - Persistent Disruption - Exited 40min DT 1 point >  
9 September 2016



Home



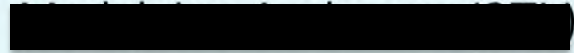
Messages



About Me



School Details



**Type:** BFL Grade 3 - Homework, teacher detention

**Date:** 12 September 2016

**Location:** Classroom

**Lesson:** 9X/Fr1 - 2Mon:1

**Points:** 1



Home



Messages



About Me



School Details

# COMMUNICATION

## Achievement

If your child receives an achievement point or a BFL grade 1, this will be updated on the app at 3:30pm each day, with the reason, and the class in which they received it.

Achievement details from: 1 September 2016 to 12 September 2016

Total points: 42

Hall Point - Work 12 September 2016 1 point

Lower Silver - Leadership Ladder 12 September 2016 40 points

Hall Point - Uniform 12 September 2016 1 point

[Redacted]

Type: Hall Point - Work
Date: 12 September 2016
Lesson: 9X/Fr1 - 2Mon:1
Points: 1

# COMMUNICATION

**Students are really keen to achieve  
Achievement/Hall points...**

**At Lymm High - 'Points mean Prizes'**

**Our whole school rewards system will  
be launched to students during  
assembly next week.**



Last year, one lucky student walked away with a 22" TV and there were lots of rewards on offer during the year





# COMMUNICATION

Hopefully this will be a useful tool in aiding communication between us and you.

## Unable to register?

If you have trouble activating your account, please email [support@lymmhigh.org.uk](mailto:support@lymmhigh.org.uk) providing your preferred contact information (mobile number and email address) and details of your children. We will aim to deal with the issue within 24 hours

**Schoolgateway**

Tests and exams, including GCSEs, can be a challenging part of school life for both children and parents.

But there are ways to ease the stress.



Hey **Google** Why

Dont You Sit

Next To Me During My

Exams? ;)

# Do you feel a pang in your stomach when you think of your child's upcoming GCSE exams?

You're not alone, every year countless parents of GCSE students worry about the exams.





**IT'S NOT THE  
LOAD THAT  
Breaks You  
DOWN, IT'S  
THE WAY  
YOU CARRY IT.**

LOU HOLTZ

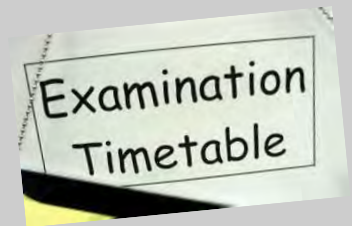
[WWW.VERYBESTQUOTES.COM](http://WWW.VERYBESTQUOTES.COM)

Students will have a lot of work to do, but it is how we support them managing the work, that will get them through.



# Top Tips

- Watch out for exam stress
- Encourage Mobile Apps
- Ensure your child eats well at exam time
- Sleep helps exam performance
- Be a little flexible at exam time
- Revise with your child
- Discuss exam nerves
- Encourage exercise and activities
- Try to reassure and be positive
- Have treats for after the exams



# Beating Stress

Ultimately, don't lose sight of the fact that there is life after exams. Things might feel like the next eight months are going to be intense, but it won't last forever

**Useful Website**

**[www.stressbusting.co.uk](http://www.stressbusting.co.uk)**

**‘Worrying is like a rocking horse it will give you something to do but it will get you nowhere’**



# ENGLISH

*Miss. N Tomkins*

**Head of English**





# ENGLISH

All pupils in Year 11 study *English Language and English Literature*

We follow the **AQA** specification:  
[www.aqa.org.uk](http://www.aqa.org.uk) has copies of specimen papers for the new syllabus and support materials which can be downloaded

# ENGLISH LANGUAGE

There are three parts to this GCSE:

1. Explorations in Creative Reading and Writing
2. Writers' Viewpoints and Perspectives
3. Spoken Language

*This is assessed in class but does not count towards – and is reported separately to – their final GCSE grade.*

# ENGLISH LANGUAGE

## Paper 1: Explorations in Creative Reading and Writing

1 hour 45 minute examination/ 50% of the total GCSE grade

Section A: Reading a literature fiction text

- Four questions of varying length totalling 40 marks

Section B: Descriptive or narrative writing

- One extended writing question worth 40 marks
- Assessed for content (24 marks) and technical accuracy (16)

# ENGLISH LANGUAGE

## Paper 2: Writers' Viewpoints and Perspectives

1 hour 45 minute examination/ 50% of the total GCSE grade

Section A: Reading of two non-fiction texts

- Four questions of varying length totalling 40 marks

Section B: Writing to present a viewpoint e.g. a letter

- One extended writing question worth 40 marks
- Assessed for content (24 marks) and technical accuracy (16)



# ENGLISH LITERATURE

## Paper 1

1 hour and 45 minute examination/ worth 40% of the GCSE

- Shakespeare play (extract and essay question) – ‘Macbeth’
- 19<sup>th</sup> century novel (extract and essay question) – ‘The Sign of Four’

## Paper 2

2 hour and 15 minute examination/ worth 60% of the GCSE

- Modern prose/drama (essay question) – ‘An Inspector Calls’
- Poetry from an anthology (which will be provided) – Power and conflict
- Unseen poetry

# ENGLISH SUPPORT

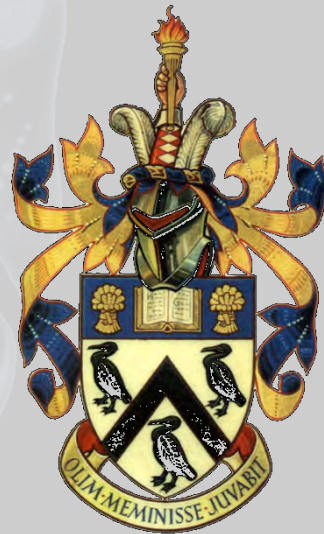
Pupils may wish to obtain copies of set texts for annotation. Details of which texts classes are studying will be provided as the year progresses. Study guides are also useful e.g. York Notes, CGP guides.

Also, there is now an increased emphasis on the importance of technical written accuracy (spelling, punctuation and grammar) so encouraging your children to take care with these aspects of their written work across *every* subject will help them to get into good habits...

# MATHS

*Mrs. C Ramsbottom*

Head of Maths



# MATHS: New Specification

- AQA Examination board
- Greater assessment time (4½ hours)
  - one hour more than currently
- Three papers, 80 marks each
  - one more paper than currently
- 33.3% non-calculator
  - 16.7% less than currently (but still 1½ hours' worth)
- 240 marks in all
  - 40 more than currently
- Fewer formulae available in examinations
  - quite a lot fewer than currently!



# New specifications

- Content taken from the Department for Education's *Mathematics GCSE subject content and assessment objectives document*, published in November 2013.

- Six content areas:

	F	H
• Number	25%	15%
• Algebra	20%	30%
• Ratio, proportion, rates of change	25%	20%
• Geometry	15%	20%
• Probability &		
• Statistics	15%	15%

# New to Foundation tier:

- use of pi and surds
- reverse percentages
- factorising quadratics
- basic trigonometry
- circle properties
- vectors
- Venn and tree diagrams

# New to Higher tier:

- gradient at a point on a curve as rate of change
- areas under graphs
- Venn diagrams (conditional probability)
- functions
- geometric progressions
- frequency trees

# Assessments 2016/17

- Pre-mocks 7<sup>th</sup>/10/11<sup>th</sup> October  
paper 1/2/3
- Mocks - November
- Post Mocks - March
- GCSE EXAM - June



# MATHS: Further Maths iGCSE

- An additional qualification in Mathematics
- Examination Board – AQA –iGCSE
- All pupils in 1a will sit the examination



# ASSESSMENT & REPORTING

**Mr T Scott**

*Head of Year 11*

# CONTROLLED ASSESSMENTS

All subjects except Maths, English and  
Psychology

Parental Support

Understanding what components are worth

# CONTROLLED ASSESSMENTS

## YEAR 11 EXTERNAL EXAMINATIONS &

### CONTROLLED ASSESSMENTS

2014-15

Please note: External Exam dates are provisional at this stage and will be confirmed on students' Statement of Entry from the Exam Boards later in the year. Controlled Assessments will take place in normal lessons in that subject; if students miss any Controlled Assessment lessons, they may be required to complete these at lunchtime or after-school in the Faculty.

Previous example

Date	Subject	Exam OR Controlled Assessment	Exam Board	Head of Faculty / Head of Subject / Key Stage Leader	Other information
<b>SEPTEMBER 2014</b>					
Sept 2014 – Feb 2015	Graphics	Controlled Assessment	AQA	Miss R Doherty / Mrs E Mellow	Unit 2. Worth 60%.
5th Sept – 28th Nov	Media Studies	Controlled Assessment	WJEC	Mrs J Edge / Miss S Lyttle	Unit 2 – Magazine production. Worth 40%.
5th Sept – 19th Dec	Art	Coursework	AQA	Miss R Doherty / Miss S Tomczyk	Landscapes and Image & Text. Worth 60%.
5th Sept – 19th Dec	Textiles	Coursework	AQA	Miss R Doherty / Miss S Tomczyk	Close-up and Alice in Wonderland coursework projects. Worth 60%.
29th Sept – 28th Nov	Geography	Controlled Assessment	AQA	Miss E Topping / Mr P Boyles	Unit 3 – Investigation of tourist honey pot in Ambleside. Worth 25% (60 marks).
<b>OCTOBER 2014</b>					
Oct – Dec 2014	English Language	Controlled Assessment	WJEC	Miss N Tomkins / Mrs A Bellers	RESITS – students below target in their CA or who wish to resit. Unit 3 – Of Mice and Men. Worth 15% (descriptive: 7.5%, narrative: 7.5%). Unit 4 – Studying Spoken Language. Worth



# **MOCK EXAMINATIONS**

**28<sup>th</sup> Nov – 16<sup>th</sup> Dec 2016**

Formal exams in all subjects – Sports Hall

Exam timetable

Mock Exam Results Day

## **English & Maths Pre-Mocks**

7<sup>th</sup> – 11<sup>th</sup> October

Off timetable – Sports Hall

Text to parents

## **English & Maths Post-Mocks**

6<sup>th</sup> – 10<sup>th</sup> March

Off timetable – Sports Hall

Text to parents

# VITAL INFORMATION

Lymm High School

ABOUT • ETHOS • PARENTS • CURRICULUM • ENRICHMENT • SUPPORT • SIXTH FORM • JOIN US •

### Headteacher's Welcome Message

We wish you a very warm welcome to our website. Lymm High School has a long history as a successful and popular school and, as Headteacher, it is a real honour to have the opportunity to lead such a special place into the next stage of its development. (Click here to read more...)

Artsmark  
ASTS  
Training School  
Healthy School  
Edge Hill University  
Mansfield Woodhouse

Search...

**QUICK LINKS**

- Parent Communication
- News
- Show My Homework

LYMM HIGH SCHOOL  
OPEN EVENING

<http://www.lymmhigh.org.uk/2016/01/13/welcome/>

Click here to access Year 11 Parent Communications.

# VITAL INFORMATION

Click here for Curriculum Areas



**Lymm High School** ABOUT ETHOS PARENTS CURRICULUM ENRICHMENT SUPPORT SIXTH FORM JOIN US

### Headteacher's Welcome Message

We wish you a very warm welcome to our website. Lymm High School has a long history as a successful and popular school and, as Headteacher, it is a real honour to have the opportunity to lead such a special place into the next stage of its development. (Click here to read more...)

Artsmark ARTS EXCELLENCE ENGLAND  
GSL  
Teaching School  
Healthy School  
Edge Hill University  
Macclesfield University  
Q

LYMM HIGH SCHOOL  
OPEN EVENING

Search...

**QUICK LINKS**

- Parent Communication
- News
- Show My Homework

<http://www.lymmhigh.org.uk/2016/01/13/welcome/>



# GCSE EQUIPMENT AND MATERIALS

Subject	Exam Board
HISTORY	OCR
<ul style="list-style-type: none"> <li>• OCR GCSE Modern World History textbook (Author: Walsh, 2009) ISBN: 978-0340981832</li> <li>• OCR GCSE Modern World History revision guide (Authors: Walsh &amp; Birks, 2011) ISBN: 978-0340992203</li> <li>• Journal: History Review (available for loan from School Library)</li> <li>• Journal: History Today Online (<a href="http://www.historytoday.com">www.historytoday.com</a>)</li> </ul>	
GEOGRAPHY	AQA
<ul style="list-style-type: none"> <li>• GCSE Geography AQA A textbook (Authors: Hurst et al., 2011) ISBN: 978-0199135493</li> <li>• GCSE Geography AQA A revision guide (Author: Parsons, 2009) ISBN: 978-1847623782</li> <li>• AQA GCSE Geography A: Student Book (textbook) (Authors: Ross et al., 2009) ISBN: 978-1408502716</li> <li>• Geographical magazine (<a href="http://www.geographical.co.uk">www.geographical.co.uk</a>)</li> </ul>	
RELIGIOUS STUDIES	Edexcel
<ul style="list-style-type: none"> <li>• Edexcel GCSE Religious Studies Unit 1A: Religion and Life - Christianity &amp; Islam</li> </ul>	



# ASSESSMENT & REPORTING TIMETABLE

Assessment	What goes home
PR1 (November)	Emerging Grade, Targets and Attitude to Learning
PR2 (January)	Emerging Grade, Targets and Attitude to Learning. Mock Exam Grades
PR3 (March)	Emerging Grade, Targets and Attitude to Learning.
PR4 (April)	Emerging Grade, Targets and Attitude to Learning

# A Reminder of Grading

## Grading the New GCSEs in 2017



NEW GCSE GRADING STRUCTURE									
9	8	7	6	5	4	3	2	1	U
					4 = C and above      and above				
A*	A	B	C	D	E	F	G	U	
CURRENT GCSE GRADING STRUCTURE									

- Broadly the same proportion of students will achieve a grade 4 and above as currently achieve a grade C and above.
- Broadly the same proportion of students will achieve a grade 7 and above as achieve an A and above.
- The bottom of grade 1 will be aligned with the bottom of grade G.

# TARGETS

- Give a final GCSE Target
- Many students have had their targets raised based on their end of year 10 progress report.
- Targets can be exceeded

# CONCERNS ABOUT PROGRESS

**Targets:** *Mr R Johnson*

**Progress in a subject:** *Class teacher/Head of Faculty*

**Across several subjects:** *Mr T Scott*





# REVISION

# REVISION

“I don’t know how to revise!”

“There’s no point, everything I revise never comes up on the test!”

“It’s too early to revise, I’ll do it the night before”

# REVISION

There are lots of different revision techniques and during this year teachers will discuss with your child subject specific hints and tips.

# REVISION



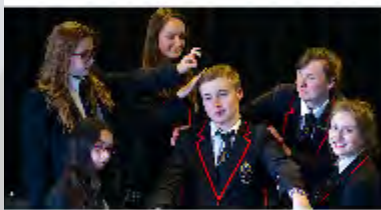


## REVISION – How can you help?

1. Set up a quiet, tidy place for them to study
2. Help them get organised
3. Make a plan with them (and stick to it!)
4. Be somebody for them to read to

# Opportunities

Lymm High School has one of the broadest ranges of extra curricular activities in the region. This may be the last year your child has the opportunity to access them.





**Mr Scott** – Head of Year 11

**Ms J O’Grady** – Deputy Head, Curriculum

**Miss Dixon** – Assistant Head, Raising Standards

**Mrs Ryles-Dean** – Assistant Head, Behaviour & Safety

**Miss Tomkins** – Head of English

**Mrs Ramsbottom** – Head of Maths, Key Stage 4

**Mr Johnson** – Assistant Head, Assessment & Reporting

**Emails available on the Website**