



LYMM
HIGH SCHOOL

THE
SCHOLARS
PROGRAMME

"IF OXFORD STANDS
FOR ANYTHING IT
STANDS FOR
EXCELLENCE AND THE
APPLICATION OF
TALENT BY HARD
WORK. THE SCHOLARS
PROGRAMME ALSO
COMMENDS THESE
VALUES AND INVITES
PUPILS TO MEET A
REALISABLE
CHALLENGE."



Lymm High School has a long-standing tradition of supporting high achieving students throughout their time here. As part of our ongoing commitment to these students, we have developed an exciting programme for a select number in each year, who are invited to join our Scholars Programme.

The Scholars Programme runs alongside various different programmes supporting the successes of our students who contribute to many different aspects of school. This includes showing exceptional talents at international, national, regional and local levels in areas such as sports, performing arts and the visual arts.

Every year we take great pride in our students' academic achievements, including those many students who progress on to top universities, including Russell Group, Oxford and Cambridge Universities to study traditional academic courses as well as Law and Medicine.

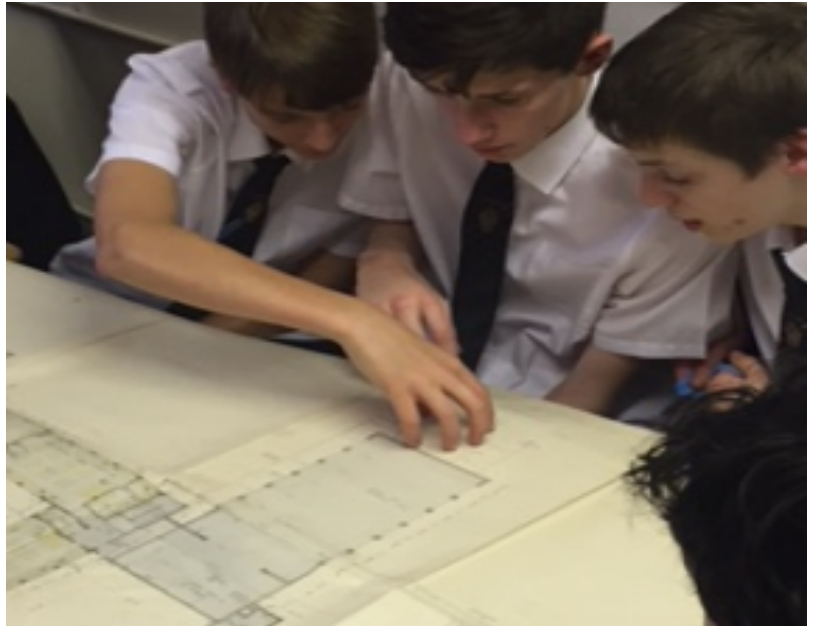
We believe that investing in our students at the earliest stages enables them to develop the aspiration and skills required to ensure that they have the widest opportunities and choices available to them at every stage of their education.

At Lymm High, we provide students with many opportunities to develop the confidence and maturity to enable them to cope with high levels of stretch and challenge and thus to make the most of their abilities. As students progress through each stage of their education they will know that they have our unwavering support and guidance every step of the way.

Mr Gwyn Williams
Headteacher

www.lymmhigh.org.uk
info@lymmhigh.org.uk

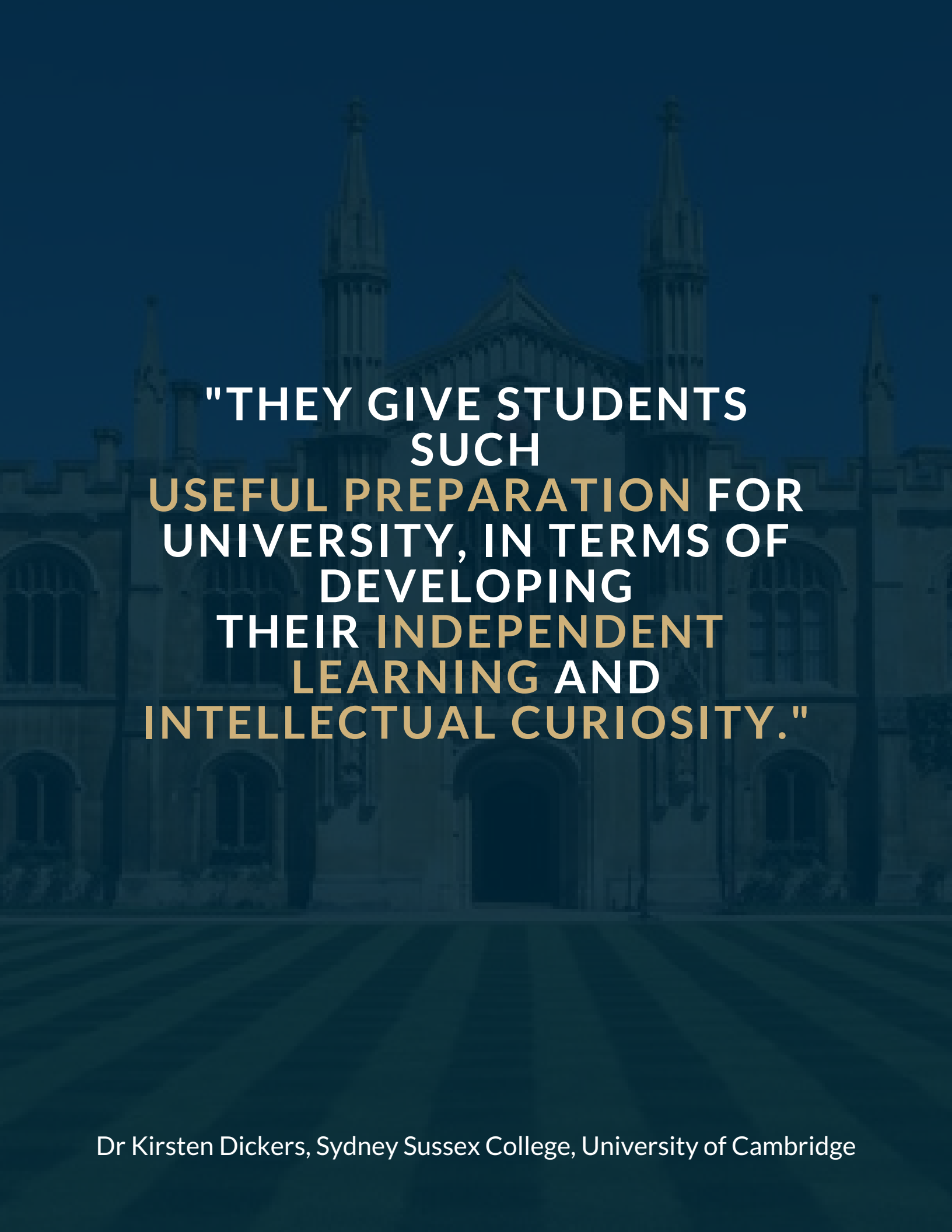
WELCOME



What is the Scholars Programme?

The Scholars Programme is essentially a programme aimed at the top 10% of each year group, to enable them access to mentors, support, extended opportunities, challenge and inspiration.

It has not been designed to replace our broad and balanced curriculum, which is based soundly on stretch and challenge and differentiation for all ability; rather it adds further enrichment through opportunities that will be provided outside of the classroom.



"THEY GIVE STUDENTS
SUCH
USEFUL PREPARATION FOR
UNIVERSITY, IN TERMS OF
DEVELOPING
THEIR INDEPENDENT
LEARNING AND
INTELLECTUAL CURIOSITY."

Dr Kirsten Dickers, Sydney Sussex College, University of Cambridge



What is the purpose of our Scholars Programme?

The purpose of the Scholars Programme is to nurture potential in our gifted students. Lymm High seeks to lead our chosen scholars to develop and embrace their gifts with passion, determination and resilience.

We also seek to fully prepare these students to pursue a pathway towards challenging and rewarding courses at the top universities, including the Russell Group and Oxbridge Universities.

Through the Scholars Programme, we aim to:

- Nurture students with exceptional gifts
- Add further breadth and enrich our curriculum
- Add further depth and complexity to our curriculum
- Accelerate the pace of learning for our gifted students within, and across, key stages
- Foster extremely high expectations for our gifted students
- Promote independence in thinking and learning and provide opportunities to self regulate

What are the characteristics of our Scholar students?

- Intensely curious, with many interests that are supported, encouraged and nurtured within and outside school
- Ability to process information with great speed and understanding whilst having a thirst to continually develop this
- To enjoy learning and seek all opportunities to gain deeper understanding
- Readily grasp underlying principles and make generalisations through deep questioning and thought provoking discussion
- Relate well to their peers, other students and adults
- Demonstrate an advanced sense of humour
- Able to work with increasing levels of independence; but transfer easily to team and group skills when needed



Full details of the Scholars Programme are available on the website and on request.

Enquiries about the Scholars Programme should be made to Mrs R Wardle – Assistant Head teacher rwardle@lymmhigh.org.uk

Mentoring

Throughout their time at school, students on the Scholars Programme will all receive some form of mentoring. In Year 9 there will be a specific focus on choices and supporting decisions at Key Stage 4.

Year 11 focuses heavily on ensuring students are prepared fully for their exams, and looking ahead at future career pathways.

We are also developing a student mentoring programme, pairing older Scholars with younger ones to act as role models, but also to support in the deepening of subject knowledge and love of learning.

One of the ways our Gateway students mentor our Scholars is through the use of an Academic Student Tutorial programme. Each Gateway participant chooses a theme or focus and delivers a 30 minute tutorial, where Scholars are asked to engage with concepts and ideas outside the curriculum and to develop their own thoughts through questioning.

Additionally, we continue to look for adults who would be able to spare some time and mentor students in Key stage 4 and the Gateway programme.

This focus would be around specific careers, such as engineering, medicine, law or even alumni of Oxbridge or Russell Group Universities who could offer support, guidance and encouragement to our students.



Enrichment visits

Part of the Scholars Programme will expose students to a range of experiences that will stretch and inspire them.

Events will enable students to develop a thirst for learning and will be delivered by experts in the field, enabling them to participate in masterclass workshops.

The underlying principles surrounding these events will be to generate an interest and love of the subject and enthusiasm for learning. It will spark thought and inspire them to shape their futures.

The visits will not be in isolation; they will provoke conversations, discussions and interest, many exposing them to previously undiscovered subjects and generating a passion to become intellectually curious.



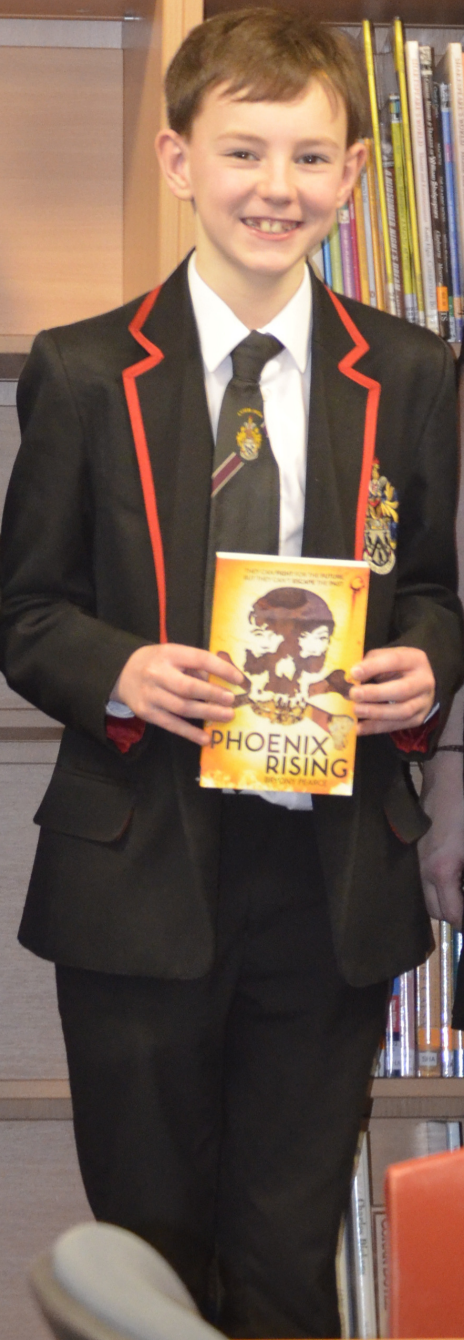
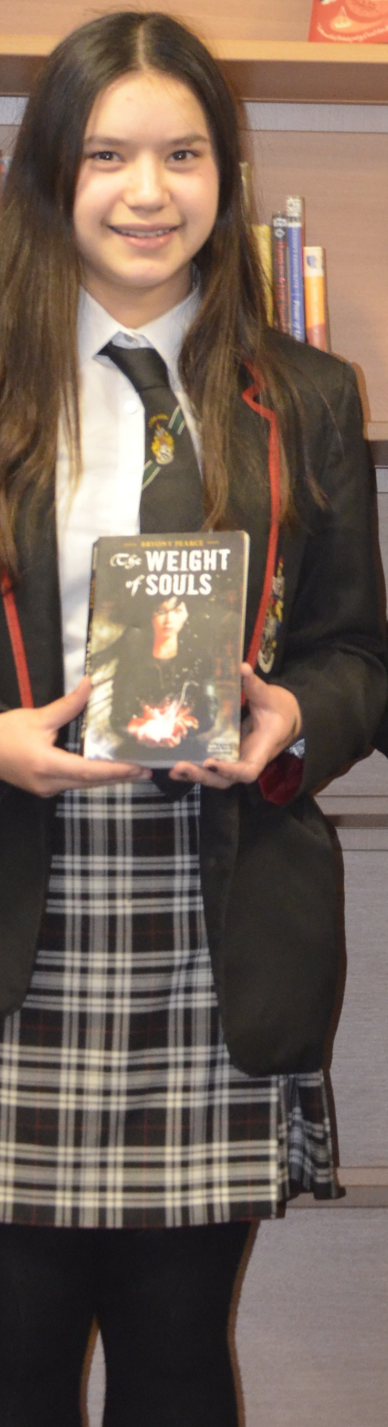
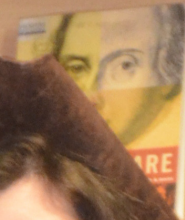
Visiting author Bryony Pearce
during a Year 8 literacy
workshop

Information

Information

Literature
810 American
820 English
830 German
840 French
850 Italian
860 Spanish, Portuguese
870 Latin
880 Classical Greek
890 Other languages

Literature
810 American
820 English
830 German
840 French
850 Italian
860 Spanish, Portuguese
870 Latin
880 Classical Greek
890 Other languages





Year 11 residential visit to
Sidney Sussex College,
University of Cambridge

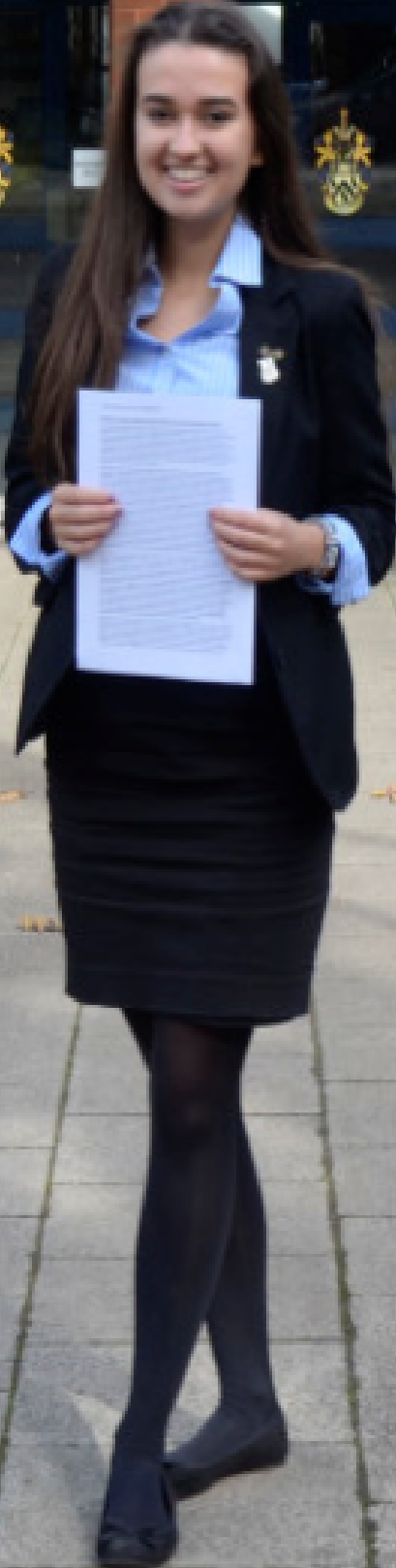
Residentials

Throughout their time on the Scholars Programmes, there may be opportunities to learn together in a new or stimulating environment, focusing on specific learning activities. This could be an overnight stay or a longer residential, but will enable the students to immerse themselves in the culture, history or specialist area of a range of different settings.


Residentials to date have involved extended revision sessions focusing on academic achievement and securing success in future examinations; or exploring student life in an Oxbridge environment. Whatever the setting, the students involved look fondly on these memories, and use these as a foundation block for future academic learning.



Lymm High School



Izzy Troth, Oxford University
Pembroke Tyler Essay winner



**"THE OXBRIDGE INTERVIEW
WORKSHOP THAT WAS
ARRANGED AT SCHOOL AS PART
OF **THE GATEWAY**
PROGRAMME WAS GREAT AND
REALLY PREPARED ME FOR MY
INTERVIEW AT OXFORD."**

Emma Catlow, former Lymm High School scholar, studying Chemical Engineering at Cambridge University

Academic Competitions

Competitions are widely promoted for the Scholars to get actively and independently involved with. The competitions, both internally and externally, enable students to apply their learning and to develop their confidence in presenting ideas and arguments in a variety of formats and to a wide range of audiences.

Competitions vary widely from speeches, essay writing, poetry and formal presentations, as well as academic essays.

- The competitions enable students to internalise the knowledge they have been exposed to both within and outside the classroom.
- Older students will be encouraged and supported to engage with national academic competitions across a wide range of subjects and topics. Fun and enjoyment will be the primary motivation but by engaging with these activities students will develop deeper skills which will prepare them for the challenges that they may face when competing against their peers in the future.



Year 11 Scholar winners of academic writing competition, 2017

Careers, Advice and Guidance

Throughout the Scholars Programme, students will gain insight into future routes and identify areas in which they would like to become increasingly specialised within. Part of this will involve support and guidance for future careers. This could take the form of access to admissions officers for informal conversations or attendance at student conferences designed to provide students with key information to help them get into the top universities.

However, there will also be a number of opportunities to explore a wide range of careers and to meet people within the industries who can provide insight and help prepare students towards being the most suitable candidate for the position. Ultimately, it will provide a nurturing environment in which students can identify their passions and interests, provoking curiosity and developing confidence and knowledge to the highest level.





Lymm High School



Educating students
successfully for future careers
and Universities

Examples of Activities

Below is an overview of aims of the programme at each key stage and some of the opportunities and activities that the Scholars Programme have experienced to date.

KS3

- Developing friendships with other able students
- Developing confidence
- Providing a breadth of experience
- Igniting a passion for learning

- Book Club* French Pen Pal Project* Latin as part of Classics for All * £10 Business Enterprise Challenge * Gladiators workshop with Dr Fear (University of Manchester) * Footballers and their wages (Maths Challenge) * Interacting with the historical environment * Citizens of the City Workshop and Tour

KS5

KS5 leads into the Gateway programme. For more information please see Lymm High School Sixth Form webpage

KS4

- Refining interests and consideration of future options and pathways
- Developing in depth knowledge and experience
- Developing advanced study skills and other skills suitable to the demands of higher education

- Shooting Stars Residential* Cambridge University Residential * Medical Mavericks Workshop * Getting into the Top Universities—PIXL Student Conference * Advanced Research Skills Workshop * Tower Poetry Competition * Academic Tutorial Programme * The Bog Mystery Forensic Science Workshop * KS4 Book Club * Human Guinea Pig Roadshow * Oxford University Roadshow * Mentoring





LYMM HIGH SCHOOL

Oughtrington Lane, Lymm, Cheshire, WA13 0RB

www.lymmhigh.org.uk