



LYMM  
HIGH SCHOOL

# YEAR 11 INFORMATION, ADVICE AND GUIDANCE EVENING





LYMM  
HIGH SCHOOL

# WELCOME

## *MR M THOMPSON*

### HEAD OF YEAR 11

AFTER THIS WEEK THERE ARE AROUND 130 SCHOOL DAYS  
UNTIL THE EXAMS START!!

EXAM SEASON WILL BE HERE BEFORE YOU KNOW IT

THE FIRST STEP TO A SUCCESSFUL YEAR IS ENSURING YOUR  
CHILD HAS FANTASTIC ATTENDANCE



LYMM  
HIGH SCHOOL

# TONIGHT

GCSE ENGLISH & MATHS  
ACHIEVEMENT  
POST-16 STUDY & ADVICE  
REVISION





LYMM  
HIGH SCHOOL

# ENGLISH

*MISS N TOMKINS*

HEAD OF ENGLISH





LYMM  
HIGH SCHOOL

# ENGLISH

ALL PUPILS IN YEAR 11 STUDY *ENGLISH LANGUAGE AND ENGLISH LITERATURE*.

WE FOLLOW THE AQA SPECIFICATION:  
[WWW.AQA.ORG.UK](http://WWW.AQA.ORG.UK) HAS COPIES OF  
SPECIMEN PAPERS FOR THE NEW  
SYLLABUS AND SUPPORT MATERIALS  
WHICH CAN BE DOWNLOADED.



LYMM  
HIGH SCHOOL

# ENGLISH LANGUAGE

THERE ARE THREE PARTS TO THIS GCSE:

1. EXPLORATIONS IN CREATIVE READING AND WRITING

2. WRITERS' VIEWPOINTS AND PERSPECTIVES

3. SPOKEN LANGUAGE

*THIS IS ASSESSED IN CLASS BUT DOES NOT COUNT TOWARDS – AND IS REPORTED SEPARATELY TO – THEIR FINAL GCSE GRADE.*



LYMM  
HIGH SCHOOL

# ENGLISH LANGUAGE

## PAPER 1: EXPLORATIONS IN CREATIVE READING AND WRITING

1 HOUR 45 MINUTE EXAMINATION/ 50% OF THE TOTAL GCSE GRADE

### SECTION A: READING A LITERATURE FICTION TEXT

- FOUR QUESTIONS OF VARYING LENGTH TOTALLING 40 MARKS

### SECTION B: DESCRIPTIVE OR NARRATIVE WRITING

- ONE EXTENDED WRITING QUESTION WORTH 40 MARKS
- ASSESSED FOR CONTENT (24 MARKS) AND TECHNICAL ACCURACY (16)



LYMM  
HIGH SCHOOL

# ENGLISH LANGUAGE

## PAPER 2: WRITERS' VIEWPOINTS AND PERSPECTIVES

1 HOUR 45 MINUTE EXAMINATION/ 50% OF THE TOTAL GCSE GRADE

### SECTION A: READING OF TWO NON-FICTION TEXTS

- FOUR QUESTIONS OF VARYING LENGTH TOTALLING 40 MARKS

### SECTION B: WRITING TO PRESENT A VIEWPOINT E.G. A LETTER

- ONE EXTENDED WRITING QUESTION WORTH 40 MARKS
- ASSESSED FOR CONTENT (24 MARKS) AND TECHNICAL ACCURACY (16)





LYMM  
HIGH SCHOOL

# ENGLISH LITERATURE

## PAPER 1

1 HOUR AND 45 MINUTE EXAMINATION/ WORTH 40% OF THE GCSE

- SHAKESPEARE PLAY (EXTRACT AND ESSAY QUESTION) – ‘MACBETH’
- 19<sup>TH</sup> CENTURY NOVEL (EXTRACT AND ESSAY QUESTION) – ‘THE SIGN OF FOUR’

## PAPER 2

2 HOUR AND 15 MINUTE EXAMINATION/ WORTH 60% OF THE GCSE

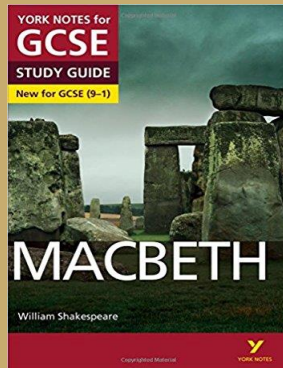
- MODERN PROSE/DRAMA (ESSAY QUESTION) – ‘AN INSPECTOR CALLS’
- POETRY FROM AN ANTHOLOGY (WHICH WILL BE PROVIDED) – ‘POWER AND CONFLICT’(COMPARATIVE ESSAY QUESTION)
- UNSEEN POETRY (COMPARATIVE ESSAY QUESTION)



LYMM  
HIGH SCHOOL

# ENGLISH SUPPORT

PUPILS MAY WISH TO OBTAIN COPIES OF SET TEXTS FOR ANNOTATION. STUDY GUIDES ARE ALSO VERY USEFUL E.G. FOR ENGLISH LITERATURE, THE AQA ENDORSED STUDY GUIDES ARE EXCELLENT (AS BELOW, PUBLISHED BY COLLINS), AS WELL AS THE USUAL YORK NOTES (SEE BELOW). CGP STUDY GUIDES ARE AVAILABLE FOR BOTH ENGLISH LANGUAGE AND ENGLISH LITERATURE.



ALSO, THERE IS NOW AN INCREASED EMPHASIS ON THE IMPORTANCE OF TECHNICAL WRITTEN ACCURACY (SPELLING, PUNCTUATION AND GRAMMAR) SO ENCOURAGING YOUR CHILDREN TO TAKE CARE WITH THESE ASPECTS OF THEIR WRITTEN WORK ACROSS *EVERY* SUBJECT WILL HELP THEM TO GET INTO GOOD HABITS...



LYMM  
HIGH SCHOOL

# ENGLISH SUPPORT

WE KNOW THAT SOME OF OUR PUPILS HAVE EXTERNAL TUTORS FOR ENGLISH; THIS CAN BE HUGELY BENEFICIAL AND WE SUPPORT IT WHOLEHEARTEDLY. IT IS IMPORTANT, HOWEVER, THAT CONSISTENT APPROACHES AND ADVICE ARE GIVEN, SO IF YOUR CHILD IS EVER UNCERTAIN, PLEASE ASK THEM TO TALK TO THEIR ENGLISH TEACHER OR TO MISS TOMKINS.

AT THE MOMENT, TUTORS COULD BE USEFULLY REVISING 'MACBETH', 'THE SIGN OF FOUR' AND THE AQA ANTHOLOGY POETRY IN PREPARATION FOR THE NOVEMBER MOCK EXAMINATIONS.

*(FOR YOUR INFORMATION, OUR SET TEXTS FOR ENGLISH LITERATURE ARE 'MACBETH', 'THE SIGN OF FOUR', 'AN INSPECTOR CALLS' AND THE 'POWER AND CONFLICT' COLLECTION IN THE AQA ANTHOLOGY).*



**LYMM**  
HIGH SCHOOL

# ENGLISH REVISION

ALL PUPILS ARE INVITED TO ATTEND REVISION SESSIONS IN ENGLISH THROUGHOUT THE YEAR. THESE ARE INVALUABLE FOR:

- IMPROVING KNOWLEDGE AND UNDERSTANDING
- GOING ABOVE AND BEYOND LEARNING IN THE CLASSROOM
- PRACTISING SKILLS
- ASKING QUESTIONS
- IMPROVING CONFIDENCE

WE WOULD URGE ALL PUPILS TO REGULARLY ATTEND SESSIONS DURING THE YEAR, NOT JUST THE LAST FEW ONES BEFORE THE EXAMINATIONS!



LYMM  
HIGH SCHOOL

# ENGLISH REVISION

REVISION CLASS TIMETABLES ARE BEING FINALISED AND DETAILS WILL BE PUBLISHED ON THE SCHOOL'S WEBSITE AND AROUND SCHOOL.

LOYALTY CARDS WILL ALSO BE GIVEN TO PUPILS TO ENCOURAGE ATTENDANCE E.G. 6 SESSIONS ATTENDED OUT OF 7 IN A HALF TERM WILL RESULT IN FANTASTIC REWARDS, AS WELL AS FANTASTIC RESULTS!

SPECIFIC ENGLISH MASTERCLASSES WILL BE AVAILABLE FOR PUPILS WORKING AT OR TARGETED GRADES 8 AND 9. INVITATIONS WILL BE ISSUED THIS HALF TERM.



LYMM  
HIGH SCHOOL

# MATHS

*Mrs C Ramsbottom*

HEAD OF MATHS





LYMM  
HIGH SCHOOL

# MATHS: NEW SPECIFICATION

- › AQA EXAMINATION BOARD
- › GREATER ASSESSMENT TIME (4½ HOURS)
  - ONE HOUR MORE THAN CURRENTLY
- › THREE PAPERS, 80 MARKS EACH
  - ONE MORE PAPER THAN CURRENTLY
- › 33.3% NON-CALCULATOR
  - 16.7% LESS THAN CURRENTLY (BUT STILL 1½ HOURS' WORTH)
- › 240 MARKS IN ALL
  - 40 MORE THAN CURRENTLY
- › FEWER FORMULAE AVAILABLE IN EXAMINATIONS
  - QUITE A LOT FEWER THAN CURRENTLY!



# NEW SPECIFICATIONS

- ▶ CONTENT TAKEN FROM THE DEPARTMENT FOR EDUCATION'S *MATHEMATICS GCSE SUBJECT CONTENT AND ASSESSMENT OBJECTIVES DOCUMENT*, PUBLISHED IN NOVEMBER 2013.
- ▶ SIX CONTENT AREAS:

	H	F
• NUMBER	25%	15%
• ALGEBRA	20%	30%
• RATIO, PROPORTION, RATES OF CHANGE	25%	20%
• GEOMETRY	15%	20%
• PROBABILITY & STATISTICS	15%	15%





LYMM  
HIGH SCHOOL

# NEW TO FOUNDATION TIER:

- USE OF PI AND SURDS
- REVERSE PERCENTAGES
- FACTORISING QUADRATICS
- BASIC TRIGONOMETRY
- CIRCLE PROPERTIES
- VECTORS
- VENN AND TREE DIAGRAMS



LYMM  
HIGH SCHOOL

# NEW TO HIGHER TIER:

- GRADIENT AT A POINT ON A CURVE AS RATE OF CHANGE
- AREAS UNDER GRAPHS
- VENN DIAGRAMS (CONDITIONAL PROBABILITY)
- FUNCTIONS
- GEOMETRIC PROGRESSIONS
- FREQUENCY TREES



LYMM  
HIGH SCHOOL

# ACHIEVEMENT

MISS N DIXON

*ASSISTANT HEAD,  
RAISING ACHIEVEMENT  
AND STANDARDS*



LYMM  
HIGH SCHOOL

# STEP UP ENGLISH AND MATHS

- FOR STUDENTS AT RISK OF ACHIEVING THEIR GRADE 4 IN ENGLISH LANGUAGE AND/OR MATHS – WAVE 1
- LIKELY TO ALSO INCLUDE SMALLER NUMBER OF OTHER STUDENTS WHO ARE BELOW TARGET GRADE (5/6/7/8/9) – WAVE 1 OR WAVE 2
- 1 HOUR PER WEEK
- EITHER AFTER-SCHOOL UNTIL 4:15PM (TU/WE/TH) OR 1 PERIOD IN THE DAY (ROLLING TIMETABLE)
- STUDENTS WILL RECEIVE A CARD AND PARENTS WILL RECEIVE A LETTER IF YOUR CHILD IS INVOLVED
- EXPERIENCED ENGLISH/MATHS STAFF LEAD



**LYMM**  
HIGH SCHOOL

# REVISION CLASSES

Day	Time	Subject	Staff	Room
Wednesday	3:10 - 4pm	Maths (for 11Y2A)	Mr Johnson	E103
Wednesday	3:15 - 4:15pm	Maths STEP UP	Mrs Ramsbottom	
Wednesday	3:20 - 5pm	Media	Miss Hinchcliffe	B202
Wednesday	3:10 - 4:30pm	Product Design	Mr Hughes	E106
Wednesday	3:15 - 4pm	RS	Mr Brownley	A214
Wednesday	3:10 - 4:30pm	Textiles	Mrs Doherty	E210
Thursday	1:15 - 1:45pm	Maths (for 11X2A)	Mrs Harrison	E101
Thursday	1:40 - 2:10pm	Maths (for 11Y1B)	Mr Fitzgibbon	E104
Thursday	1:45 - 2:10pm	Maths (for 11Y2A)	Mr Johnson	E103
Thursday	1:15 - 2:10pm	Product Design	Mr Hughes	E106
Thursday	3:15 - 4:15pm	Maths STEP UP	Mr Johnson	



LYMM  
HIGH SCHOOL

# THE REVISION ROOM

2 EVENINGS PER WEEK, INCREASES TO 3  
NEARER EXAM PERIODS

LIBRARY

3:10 – 4:45PM

DRINK AND SNACK PROVIDED

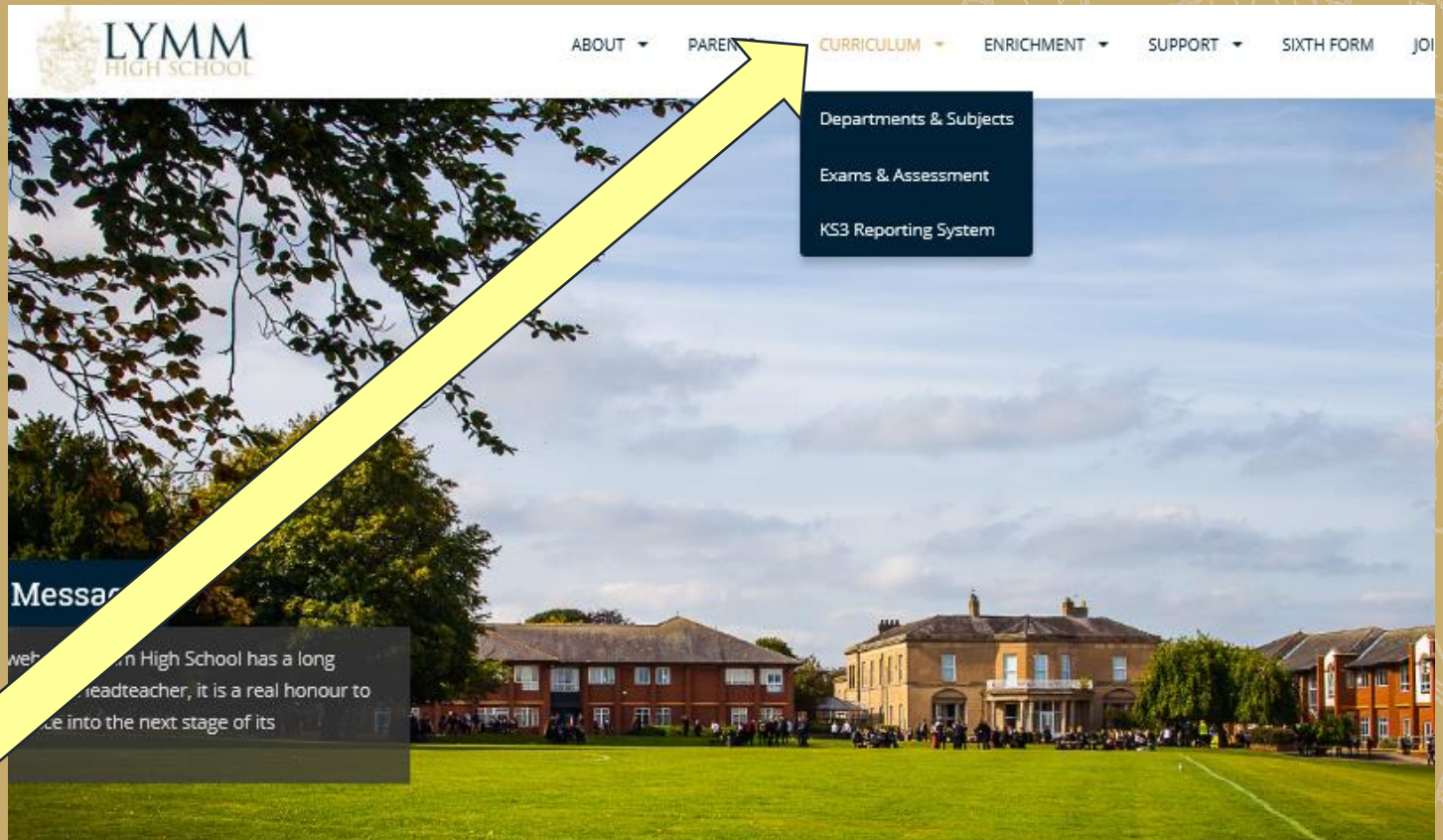
STUDENTS BRING REVISION  
MATERIAL/HOMEWORK/PAST PAPERS TO  
COMPLETE

SUPERVISED STUDY



LYMM  
HIGH SCHOOL

# PERSONAL LEARNING CHECKLISTS (PLCs)



PERSONAL LEARNING CHECKLISTS (PLCs) ARE BEING  
UPDATED AND WILL APPEAR IN HERE VERY SOON



# GCSE MATHS EXAMPLE OF PLC








GCSE Mathematics: PERSONALISED LEARNING CHECKLIST					
	Grade	Red	Amber	Green	Revised Tick <input type="checkbox"/>
<b>Area of Study: Algebra</b>					
Approximate solutions to equations using iteration.	9				
Equation of a circle	9				
Equation of a tangent	9				
Algebra and Proof	8				
Gradients and area under a graph	8				
Graphs of trigonometric functions	8				
Quadratic equations (completing the square)	8				
Composite functions	7				
Expand the product of two or more binomials	7				
Factorising difficult quadratic expressions	7				
Geometric Sequences	7				
Graphs of exponential functions	7				





LYMM  
HIGH SCHOOL

# RECOMMENDED REVISION GUIDES AND TEXTS

Computing	9 – 1	OCR	OCR GCSE Computer Science All-In-One Revision Practice (Author: Collins, 2017)	
Dance (BTEC)	D*, D, M, P	Edexcel	BTEC Level 2 First Performing Arts Student Book (Author: Jewers, 2010)	
English Language	9 – 1	AQA	AQA GCSE English Language (targeting either grades 6-9 OR grade 5): Revision Workbook (Author: Ellison, 2016)	
			GCSE English Language AQA Study & Exam Practice: Grades 5-1 (Author: CGP, 2015)	
			GCSE English Language AQA Workbook – for the Grade 9-1 course (includes Answers) (Author: CGP, 2015)	
			<b><i>These are recommended for students with target grades of 4-1.</i></b>	
			AQA GCSE English Language: Student Book 2: Assessment preparation for Paper 1 and Paper 2 (Authors: Branson & Ellison, 2015)	
English Literature	9 – 1	AQA	The Sign of the Four text (Author: Conan Doyle, 2015)	

COPIES GIVEN OUT TONIGHT, OR GO TO SCHOOL WEBSITE, DOCUMENT IS UNDER:

## PARENT COMMUNICATION / YEAR 11

LIST IS NOT COMPULSORY, SIMPLY THE GUIDES WE RECOMMEND IF YOU WISH TO PURCHASE ANY.



LYMM  
HIGH SCHOOL

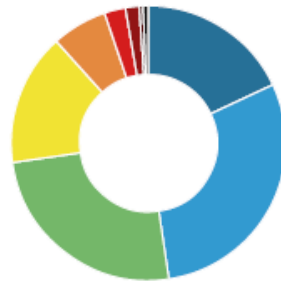
# TASSOMAI

The Learning Program

- LOW-STAKES TESTING, DRILLING CORE KNOWLEDGE NEEDED ON NEW SCIENCE SPECS
- IS A WAY TO AVOID STRESSFUL CRAMMING NEAR EXAMS BY SPREADING YOUR LEARNING AND REVISION THROUGHOUT THE YEAR.
- STUDENTS WHO USED TASSOMAI REGULARLY ACHIEVED OUTSTANDING RESULTS IN THEIR GCSE SCIENCE EXAMS.
- 88% OF STUDENTS THAT USED TASSOMAI REGULARLY ACHIEVED A\*/A/B/C IN THEIR GCSE SCIENCE EXAMS, AND 48% OF THEM ACHIEVED A\*/A (2017 RESULTS, BASED ON 80% COMPLETION RATE)
- USE ON PHONE, TABLET OR COMPUTER
- 15 MINS PER DAY OF QUIZZING
- ANALYSIS TOOLS
- EXPECT A LETTER NEXT WEEK
- SMALL COST TO PARENTS: ONE-OFF PAYMENT OF APPROX. £20



Completing users outperformed non-users with a rate of A\* to C grades that was 48.9% higher.



**COMPLETING USERS**

Results for all modules with more than 80% of the course covered

A\* or A: 47.6%  
A\* to C: 88.3%



**NON-USERS**

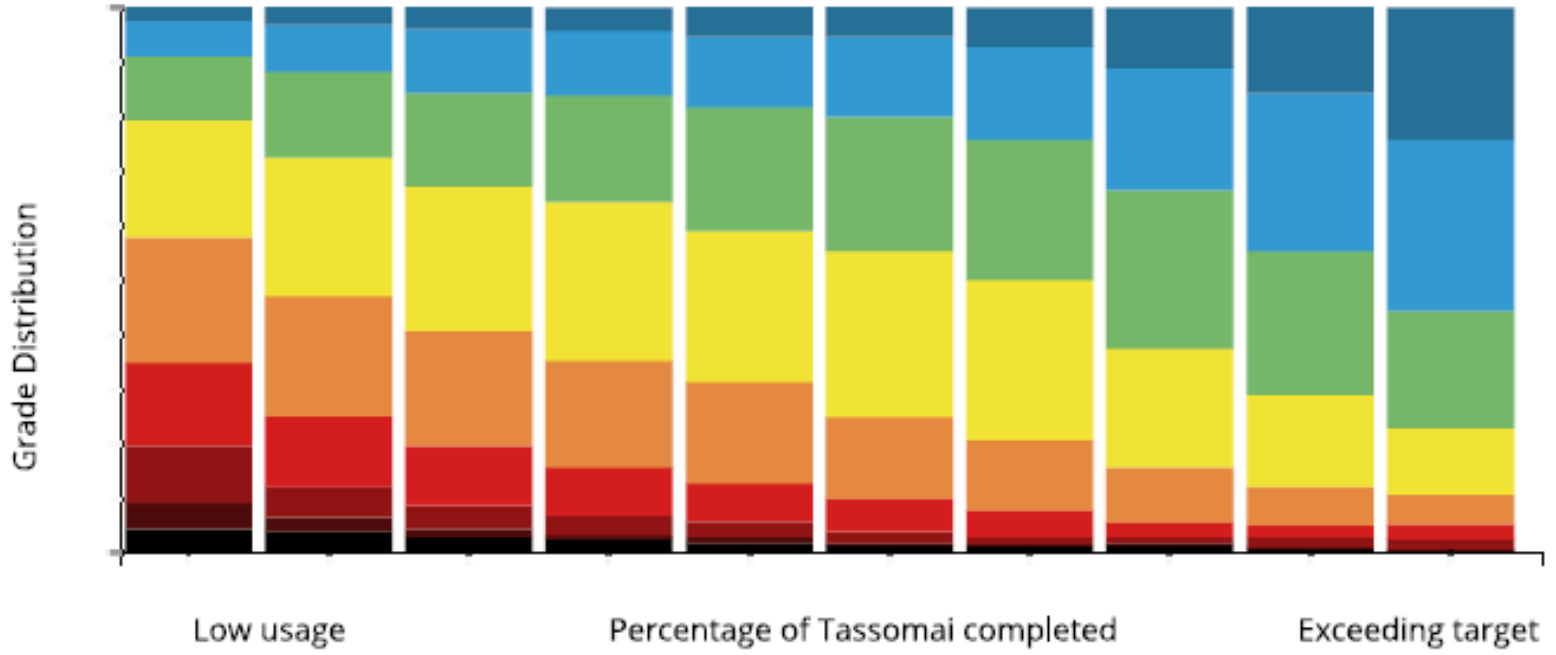
Results for all modules with less than 5% of the course covered

A\* or A: 9.5%  
A\* to C: 39.3%



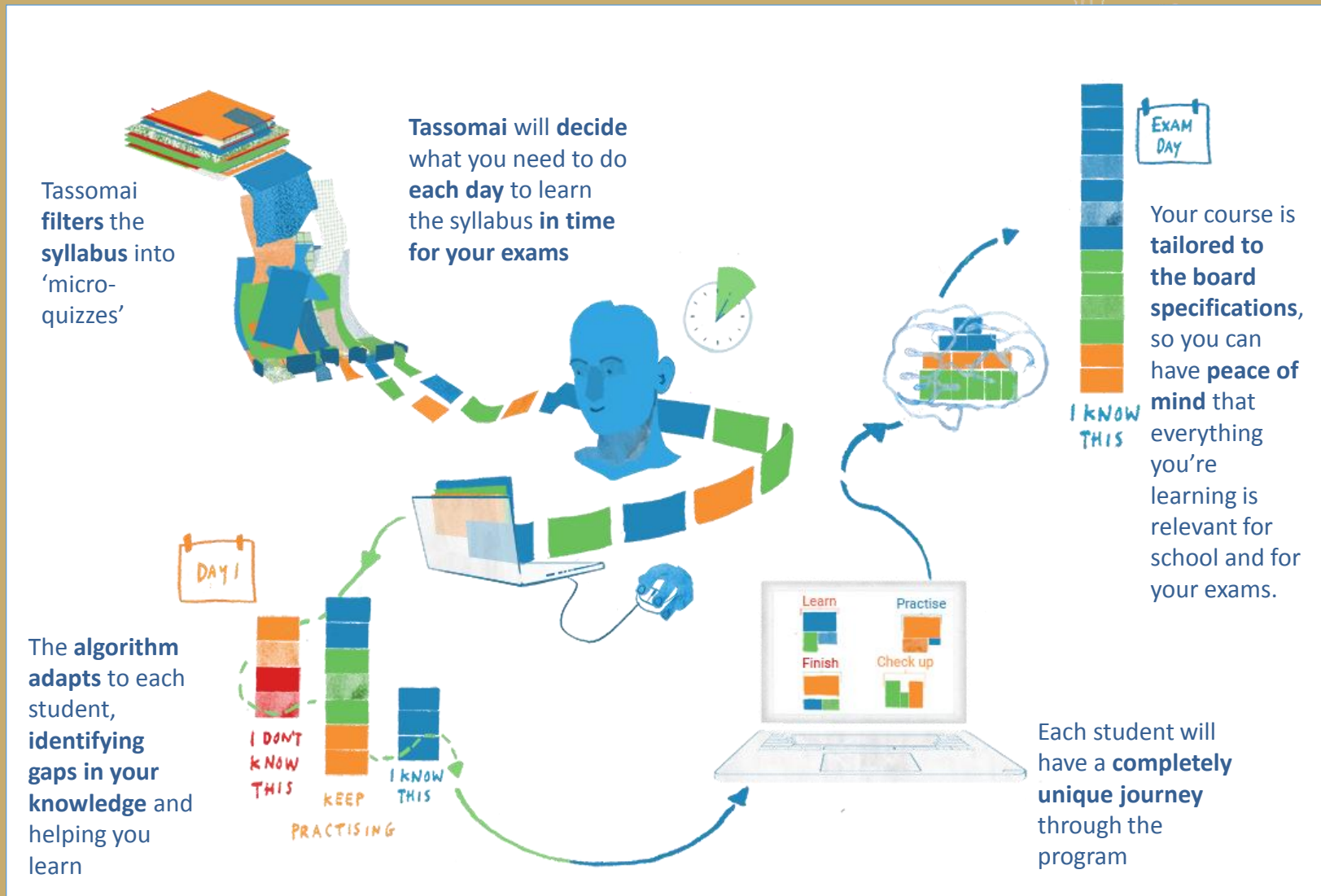
Completing users outperformed non-users with a rate of A\* to C grades that was 48.9% higher.

Cohort Outcomes Ranked By Tassomai Course Progress





# HOW DOES TASSOMAI WORK?





1 OF 3

Biology [AQA] / 02: Organisation / 2.3: Blood



What component of blood destroys PATHOGENS?

White blood cells

Red blood cells

Plasma

Platelets



Get this one right and it's three in a row...DONE!

(LAST ANSWERED 1 MONTH AGO)

A GREEN QUESTION IS ONE THAT YOU HAVE PREVIOUSLY ANSWERED CORRECTLY.



LYMM  
HIGH SCHOOL

TASSOMAI  
Learning Program

# Student Dashboard

HENRY'S DASHBOARD

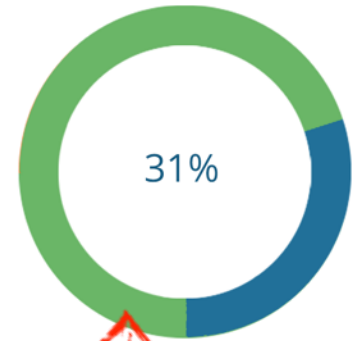
SETTINGS

LOGOUT

THIS IS YOUR  
PERFORMANCE WHEEL



## PERFORMANCE WHEEL



UP NEXT  
"AQA [T] B104:  
Bioenergetics"

Start Quiz

Skip

THIS GRAPH SHOWS YOU HOW MANY QUESTIONS YOU HAVE ANSWERED CORRECTLY OR INCORRECTLY OVER TIME.

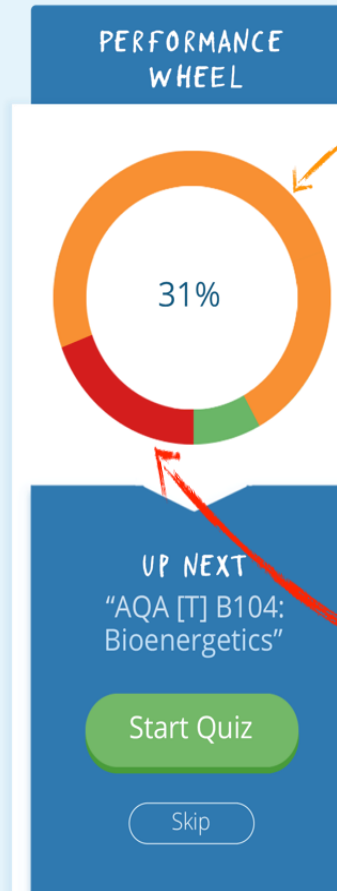
YOUR WHEEL WILL CHANGE COLOUR DEPENDING ON HOW MANY QUIZZES YOU DO, AND HOW ACCURATE YOUR ANSWERS ARE.



LYMM  
HIGH SCHOOL

# The Performance Wheel

IF YOU DON'T LOG IN EACH DAY AND DO YOUR QUIZZES FOR THAT DAY, YOUR WHEEL WILL START TO GO **ORANGE** AND THEN **RED**



ORANGE REPRESENTS THE TOPICS WHERE YOU ARE TRAILING

RED SHOWS YOU HOW MANY TOPICS ARE BEHIND







LYMM  
HIGH SCHOOL

# MOCK EXAMS

- PAST OR SPECIMEN PAPERS SAT IN ALL SUBJECTS, WITH MORE IN ENGLISH AND MATHS

17<sup>TH</sup> OCTOBER: MATHS MOCK 1 (1 PAPER)

13<sup>TH</sup> NOVEMBER: ENGLISH LITERATURE MOCK 1 (PAPER 1)

14<sup>TH</sup> NOVEMBER: ENGLISH LITERATURE MOCK 1 (PAPER 2)

15<sup>TH</sup> NOVEMBER: ENGLISH LANGUAGE MOCK 1 (PAPER 1)

17<sup>TH</sup> NOVEMBER: ENGLISH LANGUAGE MOCK 1 (PAPER 2)

11<sup>TH</sup> DECEMBER – 22<sup>ND</sup> DECEMBER: FORMAL MOCK EXAMINATION PERIOD IN ALL SUBJECTS (INC. MATHS MOCK 2 (3 PAPERS), BUT NOT ENGLISH)

22<sup>ND</sup> JANUARY: GCSE MOCK RESULTS DAY

W/C 12<sup>TH</sup> FEBRUARY: ENGLISH LANGUAGE AND LITERATURE MOCK 2 (4 PAPERS)

W/C 12<sup>TH</sup> MARCH: MATHS MOCK 3 (3 PAPERS)



LYMM  
HIGH SCHOOL

# TARGETS

- GIVE A FINAL GCSE TARGET
- MANY STUDENTS HAVE HAD THEIR TARGETS RAISED BASED ON THEIR END OF YEAR 10 PROGRESS REPORT.
- TARGETS CAN BE EXCEEDED



# ASSESSMENT & REPORTING TIMETABLE

Assessment	Subject	What goes home
PR1 (November 2017)	All	Emerging Grade, Targets and Attitude to Learning
PR2 (January 2018)	All	Emerging Grade, Targets and Attitude to Learning.
22 <sup>nd</sup> January 2018	All subjects with a formal written exam	Mock exam grades – these will indicate if they include any practical units or coursework.
PR3 (mid-March 2018)	All subjects <b>except</b> English and Maths	Emerging Grade, Targets and Attitude to Learning.
PR3 (late-March 2018)	English and Maths	Emerging Grade, Targets and Attitude to Learning

GCSE Exam Results Day – Thursday 23<sup>rd</sup> August 2018





LYMM  
HIGH SCHOOL

# CONCERNS ABOUT PROGRESS

**PROGRESS IN A SUBJECT:** *CLASS TEACHER /  
HEAD OF FACULTY*

**ACROSS SEVERAL SUBJECTS:** *MR M  
THOMPSON / MISS N DIXON*

**TARGETS AND REPORTS:** *MR R JOHNSON*



LYMM  
HIGH SCHOOL

# DUKE OF EDINBURGH SILVER



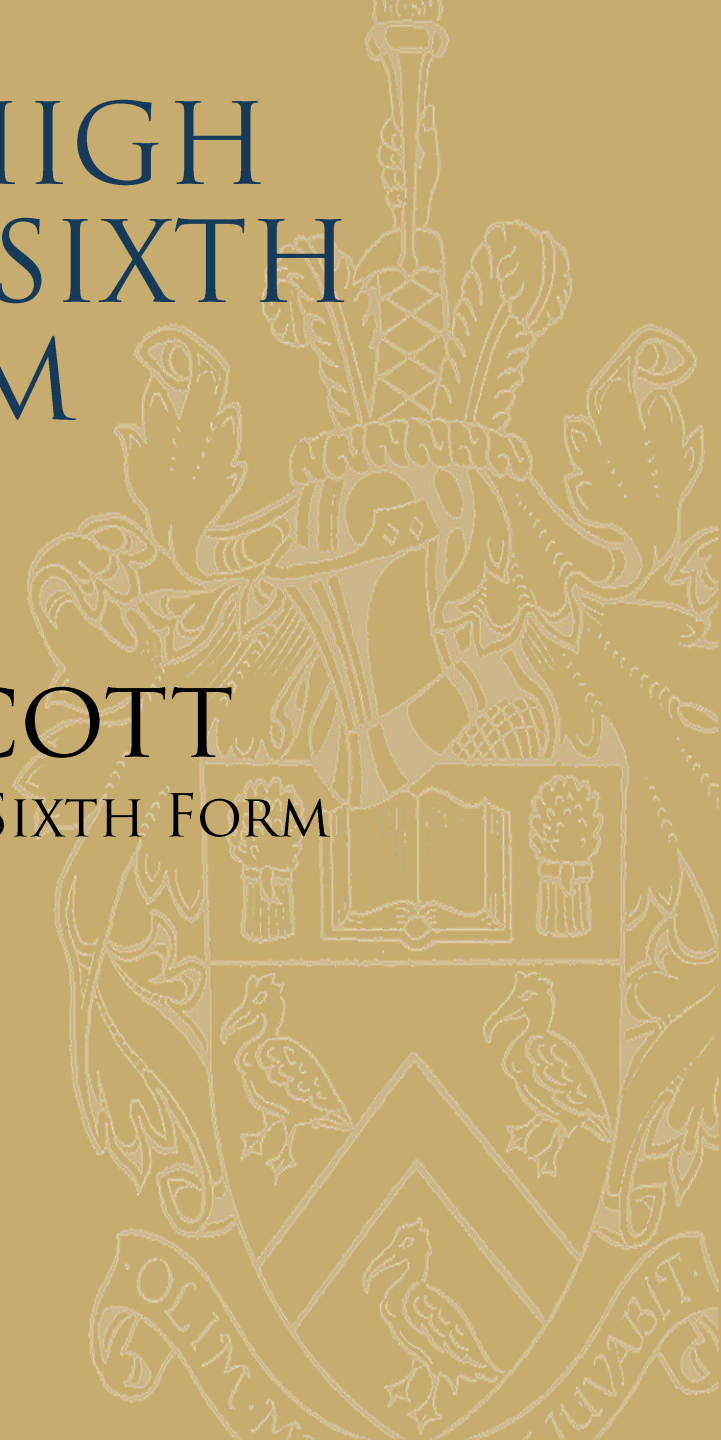
- 50 STUDENTS PARTICIPATED IN DOFE SILVER LAST YEAR.
- EVERY STUDENT HAS ACTIONS TO TAKE CARE OF OR SECTIONS TO COMPLETE STILL IN THEIR eDOFE ACCOUNT.
- THESE MUST BE FINISHED IF THEY ARE TO RECEIVE THEIR AWARD.
- LOGON NOW!
- NEXT OPPORTUNITY WILL BE GOLD IN YEAR 12, MORE INFO TO FOLLOW ON WEBSITE LATER THIS TERM (ENRICHMENT/DUKE OF EDINBURGH)
- SEE MRS HILL IN SCHOOL SHOP IF ANY PROBLEMS



LYMM  
HIGH SCHOOL

# LYMM HIGH SCHOOL SIXTH FORM

MR T SCOTT  
ACTING HEAD OF SIXTH FORM







LYMM  
HIGH SCHOOL

# LYMM HIGH SCHOOL SIXTH FORM

GENERAL INTRODUCTION TO SIXTH  
FORM GIVEN TO ALL STUDENTS LAST  
TERM

WHY US?

- NATURAL PROGRESSION
- COURSES ON OFFER
- ENRICHMENT OPPORTUNITIES
- LEADERSHIP OPPORTUNITIES
- EXTRA-CURRICULAR
- FAMILIAR AND SUPPORTIVE ENVIRONMENT
- EXCELLENT RESULTS
- THE GATEWAY PROGRAMME
- INTENSIVE SUPPORT





LYMM  
HIGH SCHOOL

# LYMM HIGH SCHOOL SIXTH FORM

## HOW IS IT DIFFERENT?

- TREATED AS A YOUNG ADULT
- GREATER DEGREE OF INDEPENDENCE WITH INTENSIVE SUPPORT
- STUDY PERIODS
- SUPERVISED STUDY SESSIONS
- MANAGING THEIR OWN TIME
- OPPORTUNITY TO TAKE ON POSITIONS OF RESPONSIBILITY
- BE INVOLVED IN A VARIETY OF ENRICHMENT ACTIVITIES AND HAVE A FULL STUDENT EXPERIENCE
- REMAIN IN A SUPPORTIVE AND CARING COMMUNITY WHERE STUDENTS ARE PUSHED TO ACHIEVE THEIR VERY BEST



**LYMM**  
HIGH SCHOOL

# LYMM HIGH SCHOOL SIXTH FORM

	<b>A2 Results</b>			
<b>Measure</b>	<b>2017</b>	<b>2016</b>	<b>2015</b>	<b>2014</b>
<b>A*-A</b>	33%	24%	26%	25%
<b>A*-B</b>	59%	52%	53%	47%
<b>A*-C</b>	85%	82%	78%	72%
<b>A*-E</b>	99%	99%	99%	99%





LYMM  
HIGH SCHOOL

# LYMM HIGH SCHOOL SIXTH FORM

## ADMISSIONS TIMELINE...

- THURSDAY 9<sup>TH</sup> NOVEMBER 2017 – 6<sup>TH</sup> FORM OPEN EVENING
- PRIORITY APPLICATION FORMS
- ADMISSIONS 2017 PROCESS GOES LIVE!
- INTERVIEWS AFTER FEBRUARY HALF TERM
- CAREERS GUIDANCE APPOINTMENTS ARRANGED BY HEAD OF YEAR/STUDENT SERVICES



LYMM  
HIGH SCHOOL

# LYMM HIGH SCHOOL SIXTH FORM

## NEXT STEPS...

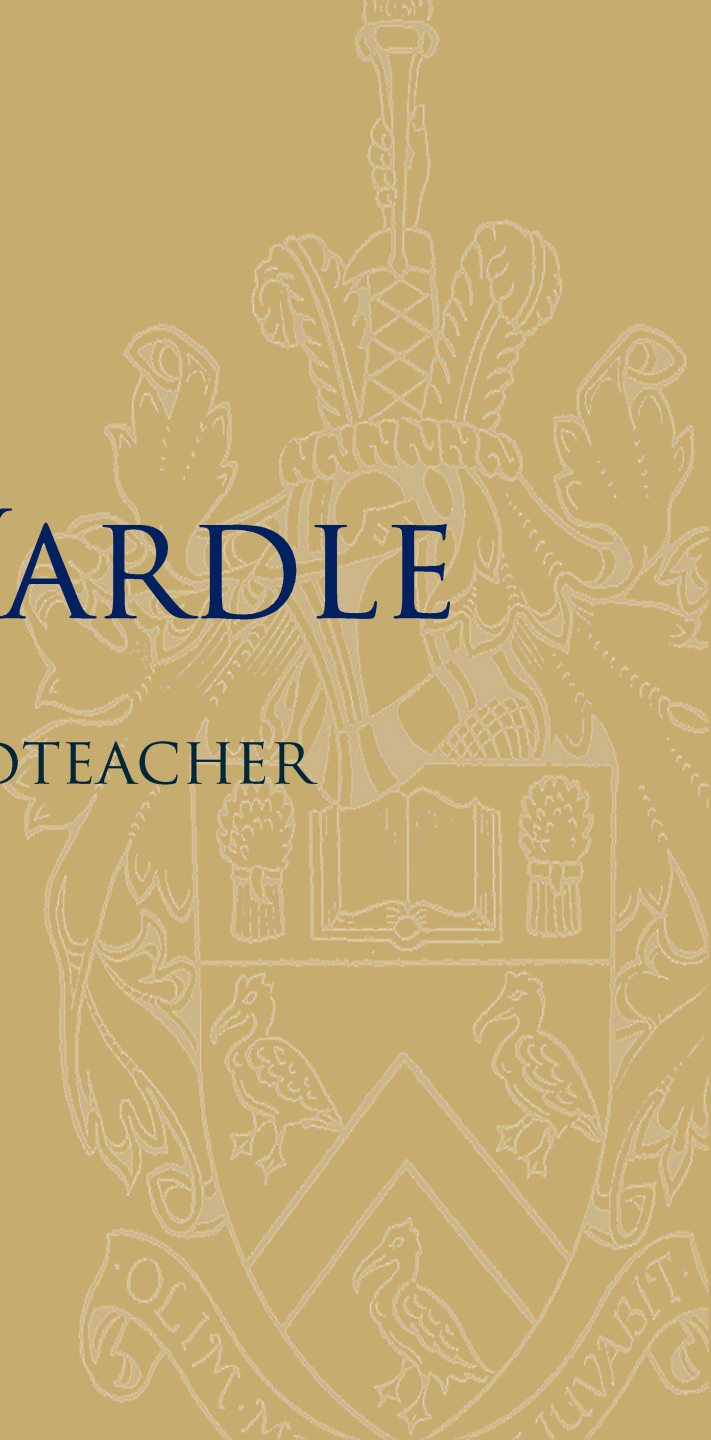
- TALK TO CURRENT YEAR 12 STUDENTS AND STAFF MEMBERS
- RESEARCH UNIVERSITY COURSES TO MAKE INFORMED DECISIONS
- ATTEND SIXTH FORM OPEN EVENING ON 9TH NOVEMBER 2017
- VISIT OUR WEBSITE FOR MORE INFORMATION  
[HTTP://WWW.LYMMHIGH6THFORM.ORG.UK/](http://www.lymmhigh6thform.org.uk/)
- FOLLOW US ON TWITTER  
[@LYMMHIGH6THFORM](https://twitter.com/lymmhigh6thform)



LYMM  
HIGH SCHOOL

# MRS R WARDLE

ASSISTANT HEADTEACHER





# THE MANY FACES OF REVISION

...



[#maxophiarobb-appreciation](#) | [Tumblr](#)





LYMM  
HIGH SCHOOL



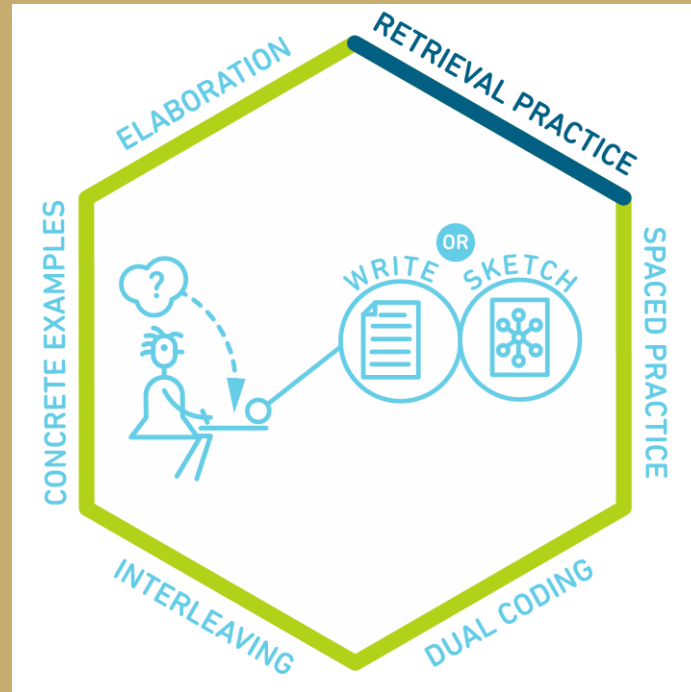
# 6 Strategies for effective learning







LYMM  
HIGH SCHOOL

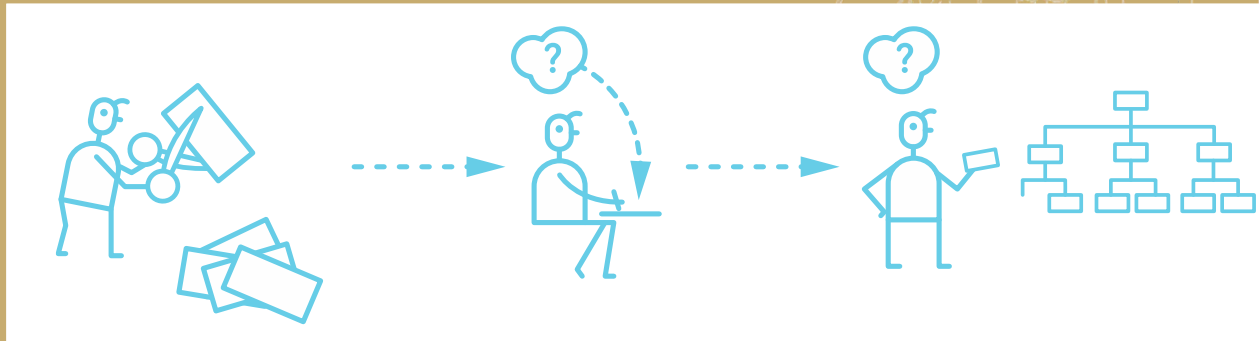
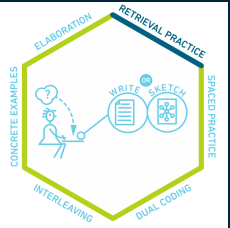


PRACTICE BRINGING INFORMATION TO MIND

Retrieval Practice



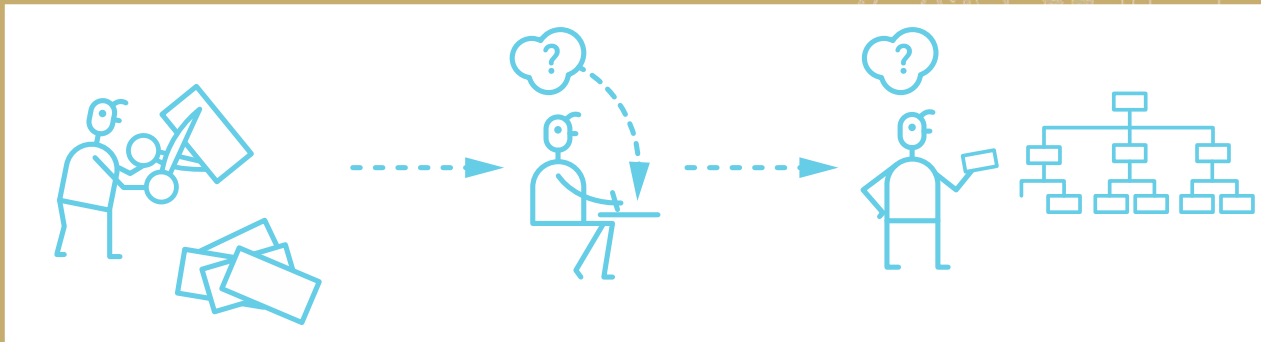
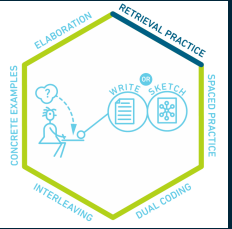
LYMM  
HIGH SCHOOL



# Retrieval Practice



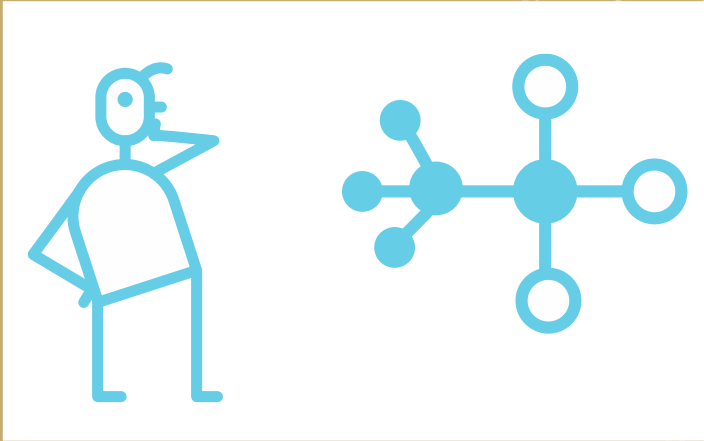
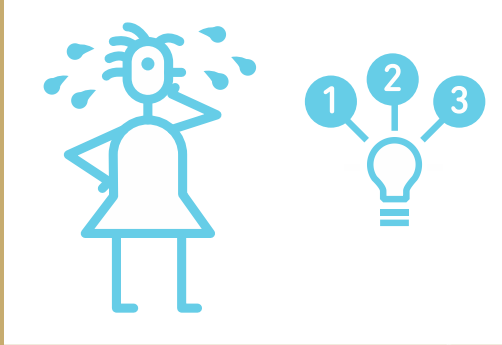
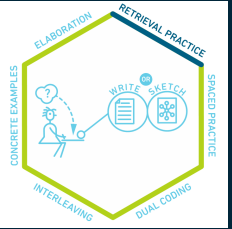
LYMM  
HIGH SCHOOL



# Retrieval Practice



LYMM  
HIGH SCHOOL



# Retrieval Practice



LYMM  
HIGH SCHOOL

LIST A

FAHTER  
FOOTBLAL  
DCOTOR  
OUTCOEM  
TEACHRE

LIST B

HERFAT  
LBOFTOAL  
RTOCOD  
ECMUTOO  
EERTACH

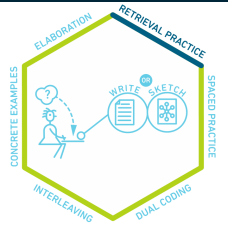
Retrieval Practice



# WAYS TO USE RETRIEVAL PRACTICE

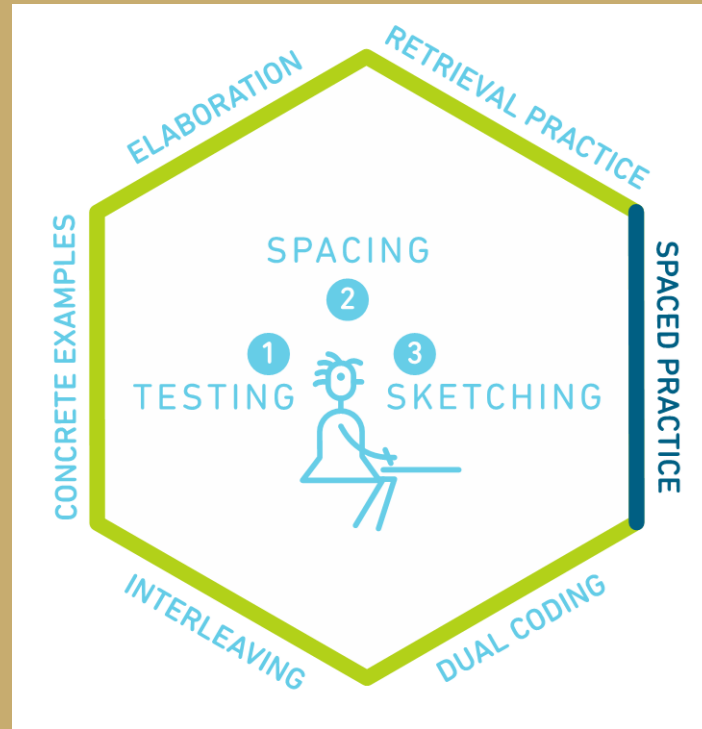
- FLASH CARDS – BUT NOT A LONG TIME CREATING THESE
- QUICK FIRE QUIZ ON CONTENT
- REGULAR PRACTICE

DON'T AVOID THE SUBJECTS/AREAS/TOPICS THAT ARE THE HARDEST. USE THE PLCS AND RAG THEM TO CHECK UNDERSTANDING. IN ENGLISH AND MATHS THEY HAVE SMITH PROFORMAS WHICH SHOW AREAS THEY NEED TO DEVELOP IN





LYMM  
HIGH SCHOOL



SPACE OUT YOUR PRACTICE OVER TIME

Spaced Practice



LYMM  
HIGH SCHOOL



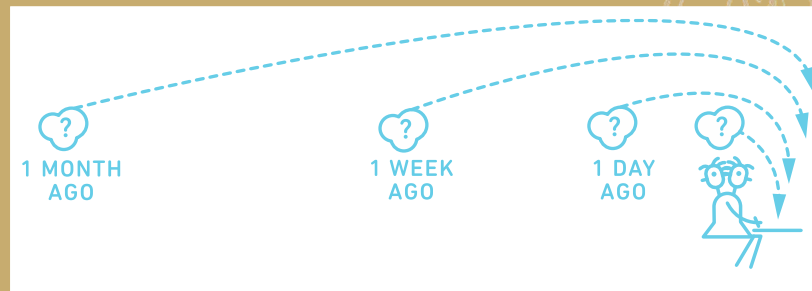
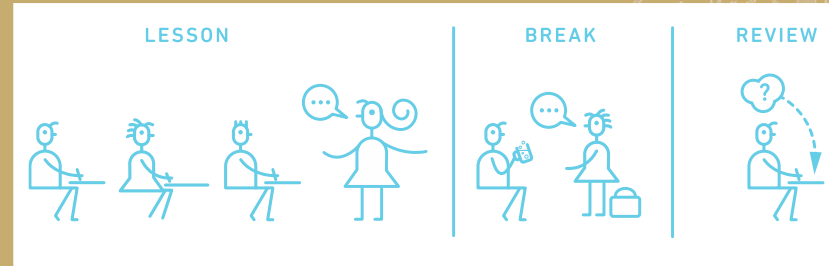
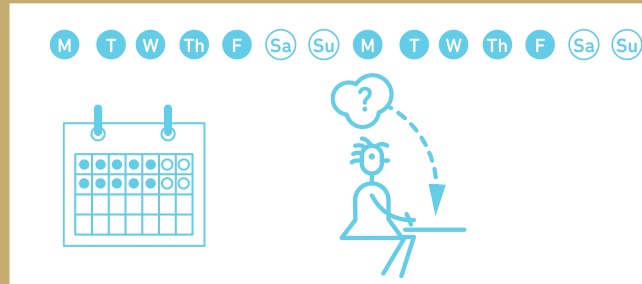
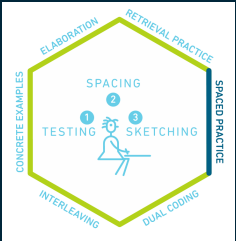
Spaced Practice







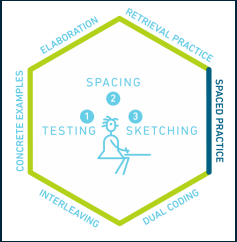
LYMM  
HIGH SCHOOL



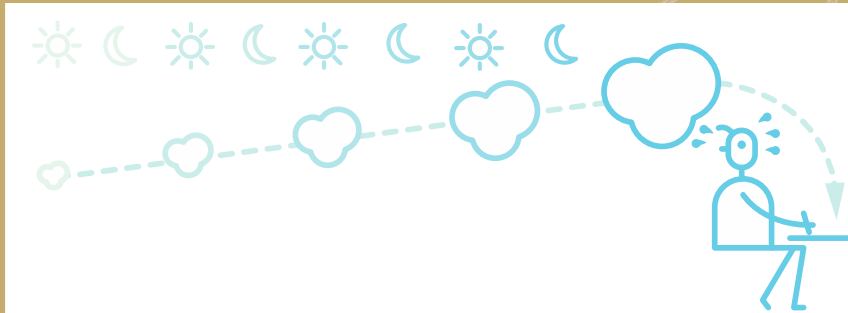
# Spaced Practice



LYMM  
HIGH SCHOOL



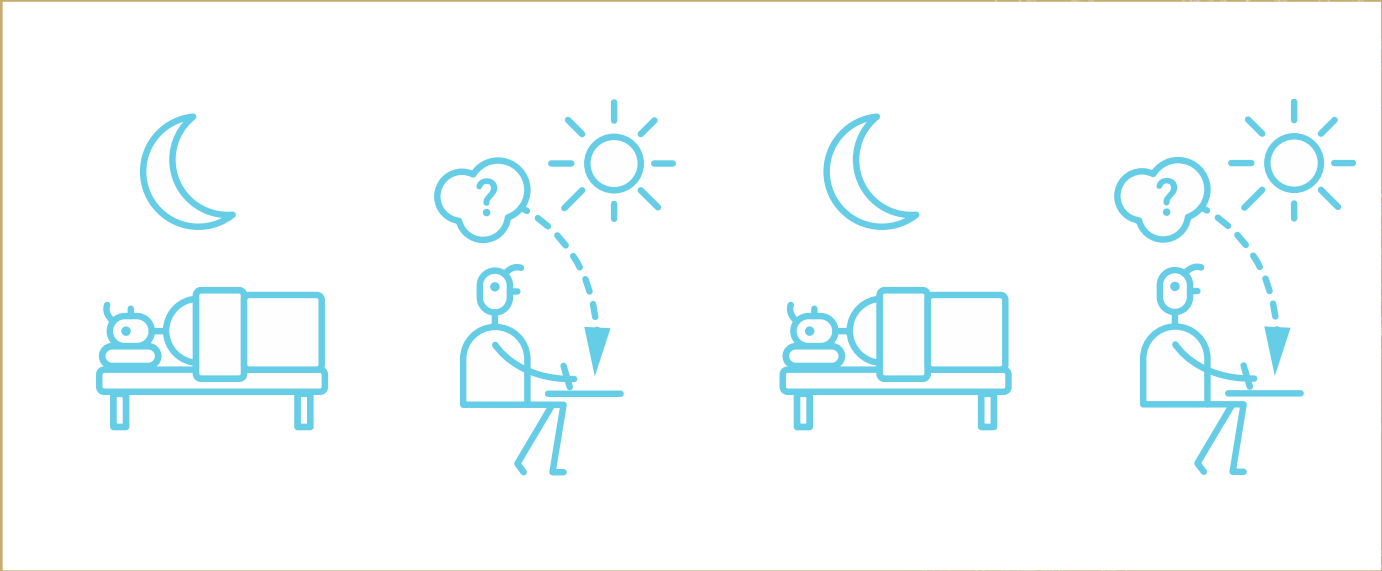
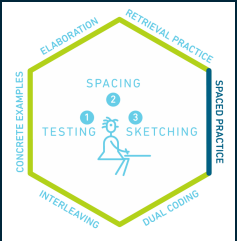
TESTING 1      2 SPACING      3 SKETCHING



# Spaced Practice



LYMM  
HIGH SCHOOL



# Spaced Practice

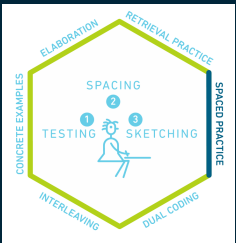


LYMM  
HIGH SCHOOL

# WAYS TO USE SPACED PRACTICE

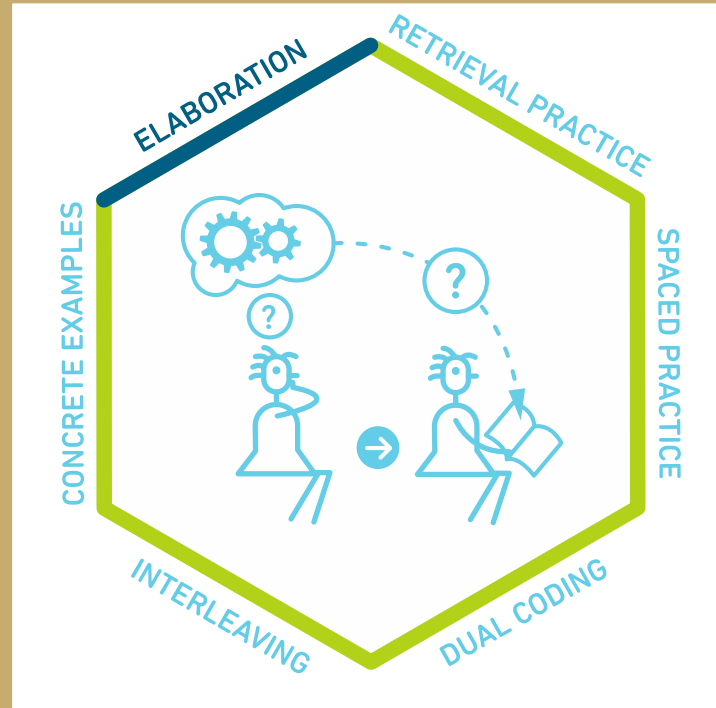
- DON'T REVISE A WHOLE TOPIC/EXAM SUBJECT ALL AT ONCE
- PLAN A REVISION TIMETABLE
- AVOID HIGHLIGHTING AND PASSIVE REVISION SKILLS
- GET THEM TO SUMMARISE TEXT INTO 5 POST IT NOTES; 2 SENTENCES. THEN REWRITE IN OWN WORDS
- CONSIDER THE CORNELL METHOD – STUDENT WRITES CLASS NOTES. A DAY LATER THEY SUMMARISE EACH POINT IN THE PARAGRAPH. A COUPLE OF DAYS LATER USING ONLY THEIR SUMMARY THEY REWRITE AS MUCH AS THEY CAN RECALL IN THEIR OWN WORDS AND CHECK

Spaced Practice





LYMM  
HIGH SCHOOL

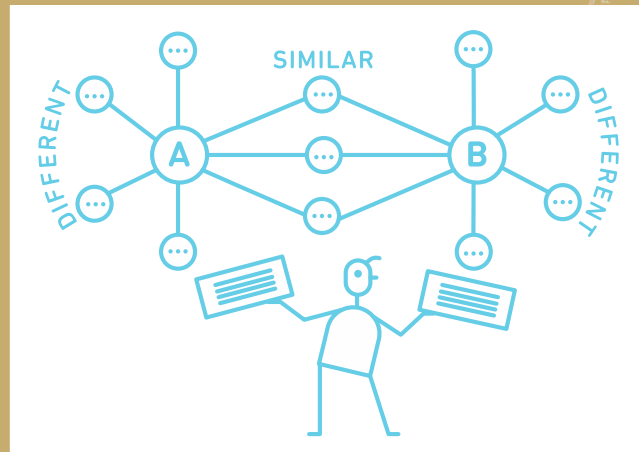
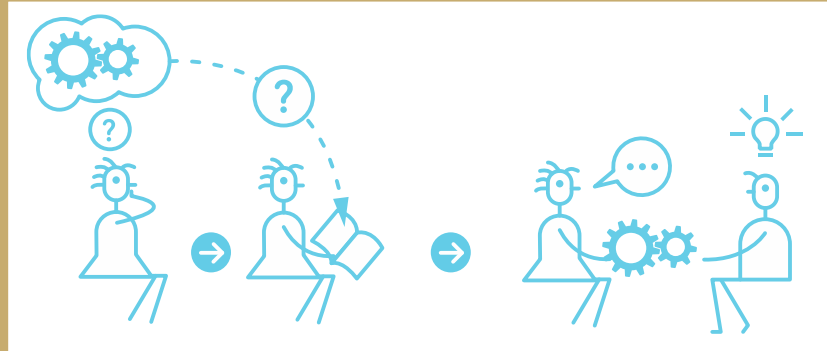


EXPLAINING AND DESCRIBING IDEAS WITH  
MANY DETAILS

Elaboration



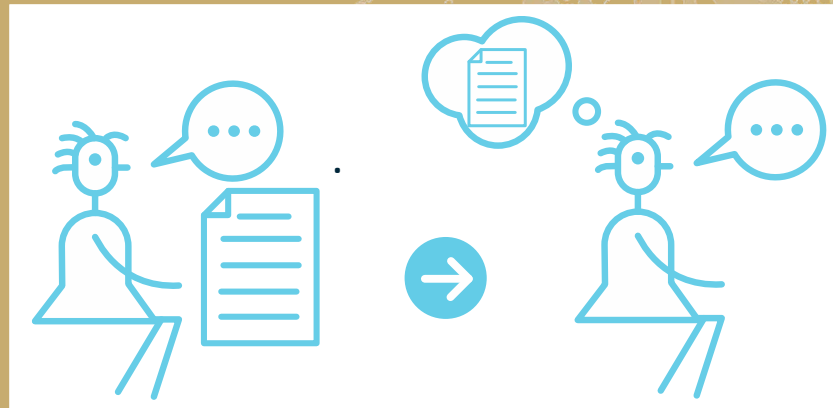
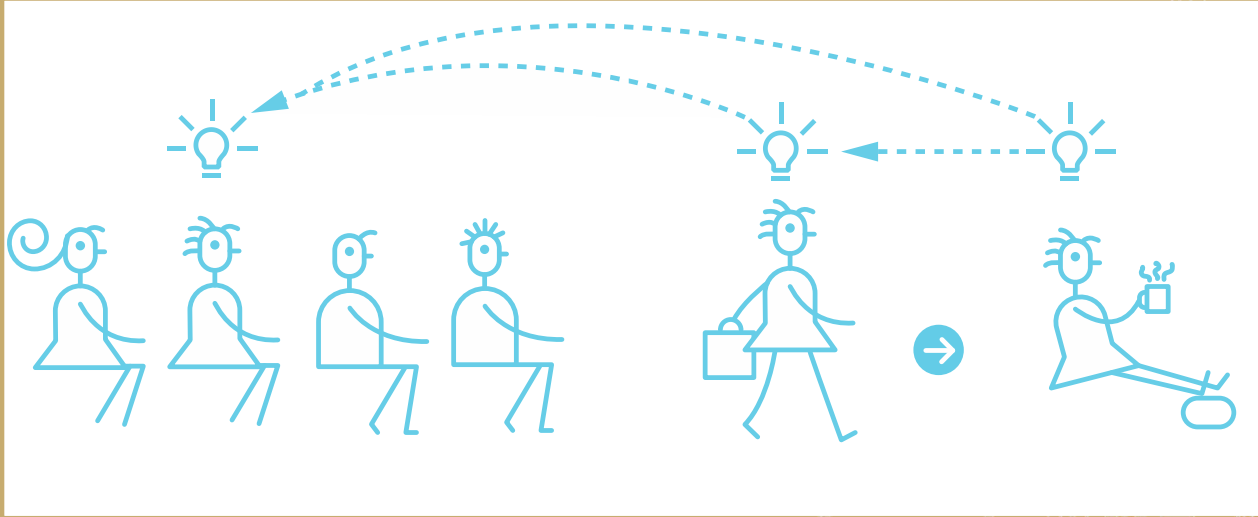
LYMM  
HIGH SCHOOL



# Elaboration



LYMM  
HIGH SCHOOL



Elaboration



LYMM  
HIGH SCHOOL

# WAYS TO USE ELABORATION

- TAKE A PART OF THE REVISION PROCESS
- ENCOURAGE YOUR CHILD TO TEACH YOU SOMETHING ABOUT THE TOPIC
- PAIRED/GROUP REVISION HAS A ROLE TO PLAY
- AS THEY ARE REVISIONING GET THEM TO EMAIL THEMSELVES WITH SOME QUESTIONS THAT THEY CAN ADDRESS AT A DIFFERENT POINT – CAN THEY POSE THEIR OWN QUESTION OF WHAT MAY COME UP IN THE EXAM?
- DON'T ACCEPT THEIR FIRST ANSWER – ASK THEM TO ELABORATE FURTHER, CAN THEY EXTEND THEIR ANSWERS? CAN THEY TELL YOU WHAT THEY WOULD NEED TO ADD TO GET TO THE NEXT LEVEL/GRADE?

Elaboration







LYMM  
HIGH SCHOOL

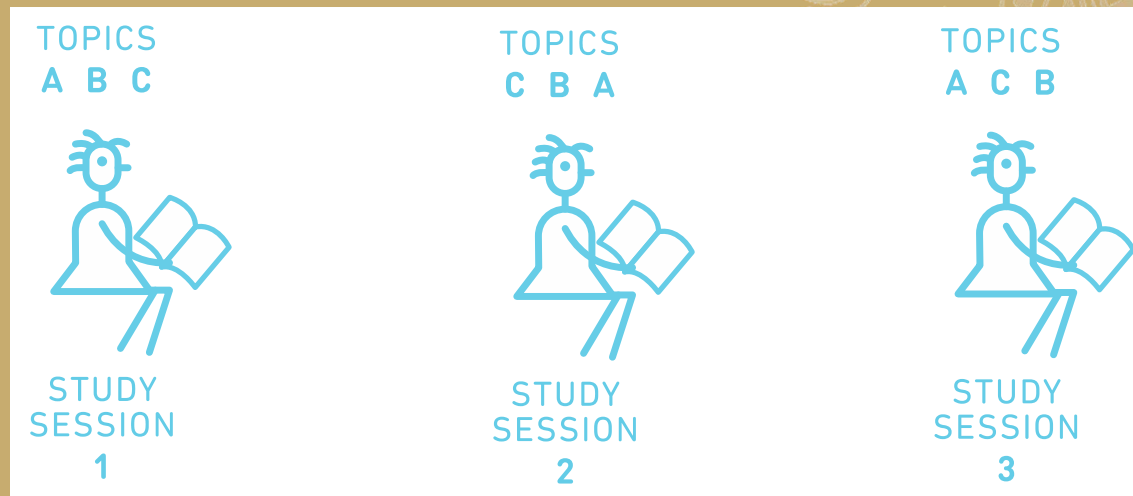
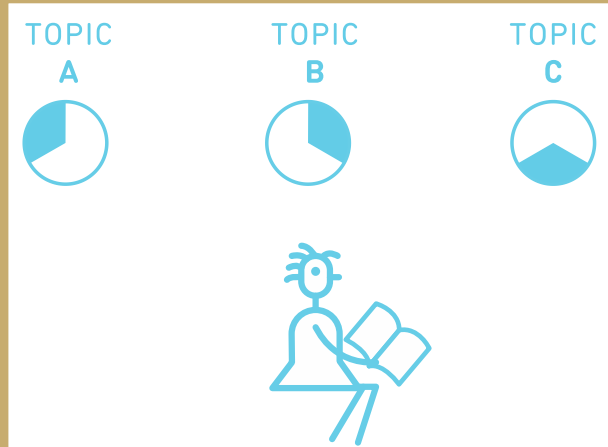


SWITCHING BETWEEN IDEAS WHILE YOU STUDY

Interleaving



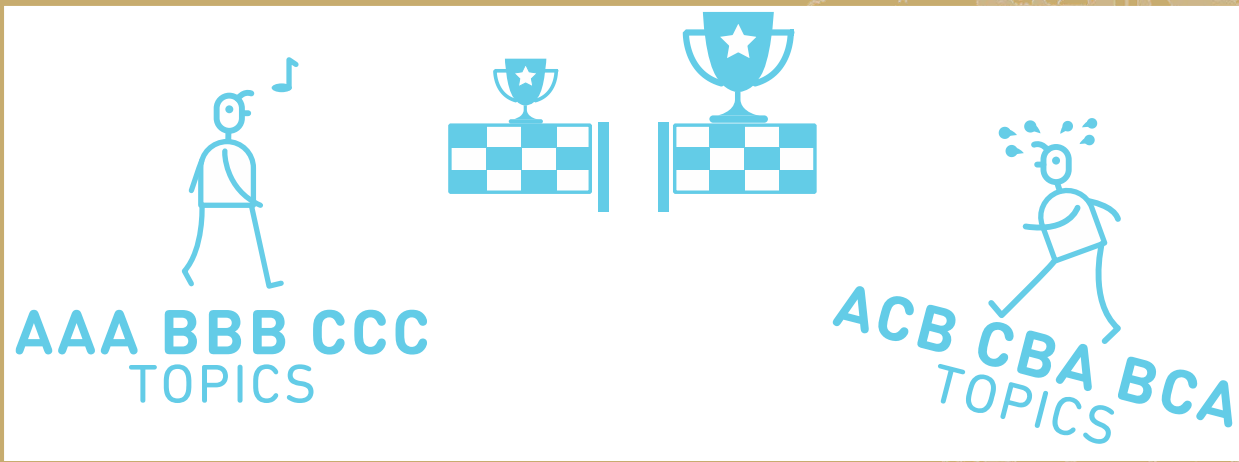
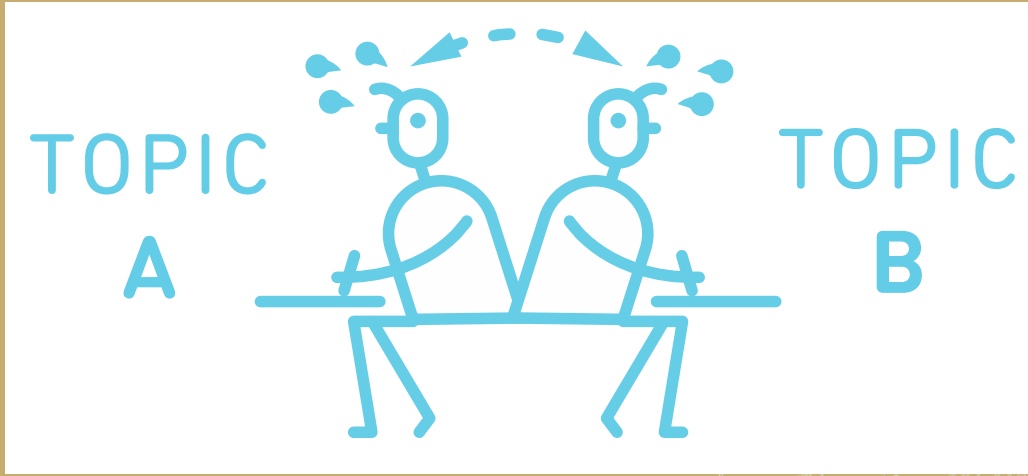
LYMM  
HIGH SCHOOL



# Interleavings



LYMM  
HIGH SCHOOL



Interleaving



LYMM  
HIGH SCHOOL

# WAYS TO USE INTERLEAVING

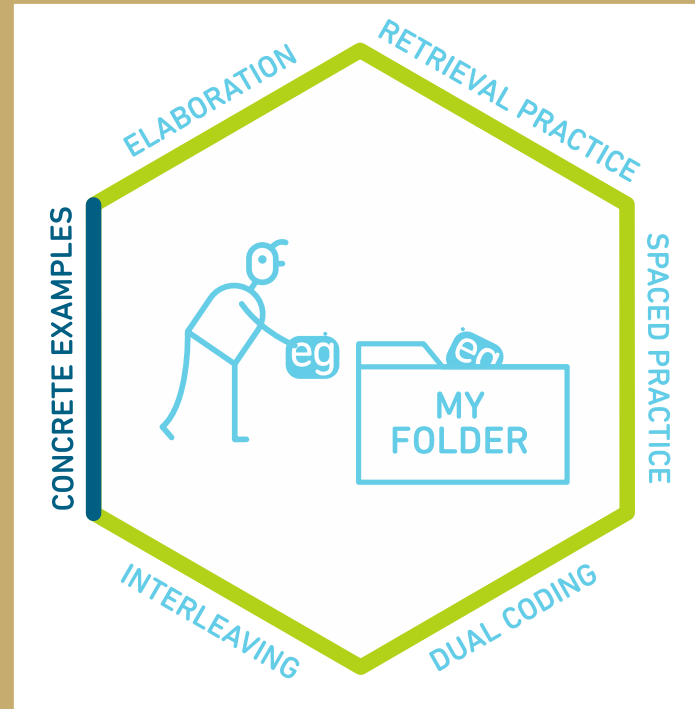
- PLAN A REVISION TIMETABLE THAT DOESN'T FOCUS ON THE NEXT EXAM
- USE A TIMER WHERE THERE IS AN AGREED AMOUNT OF TIME BEFORE SWAPPING ONTO NEXT TOPIC – POSSIBLY USE THE EXAM PAPER STRUCTURE
- START REVISION NOW.
- ATTEND THE REVISION WORKSHOPS
- DON'T LET THEM SHY AWAY FROM THE AREAS WHICH ARE DIFFICULT

Interleaving





LYMM  
HIGH SCHOOL

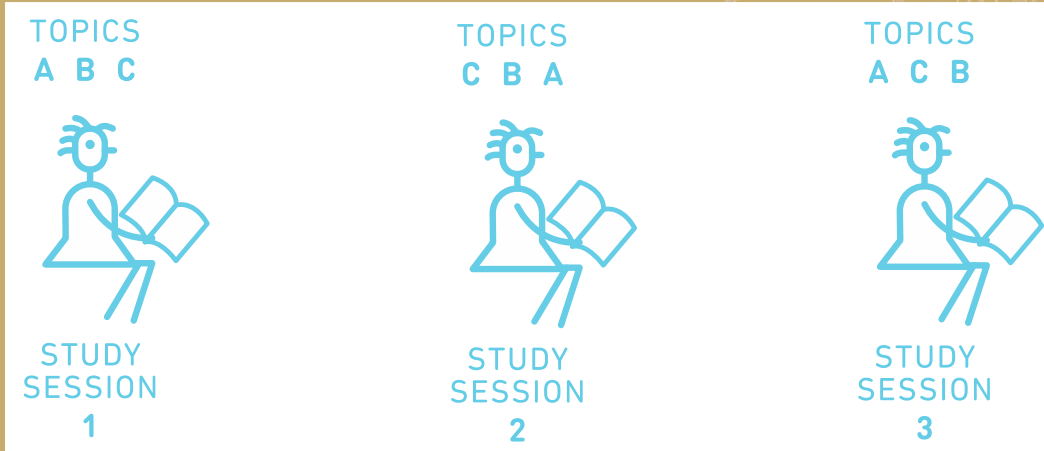
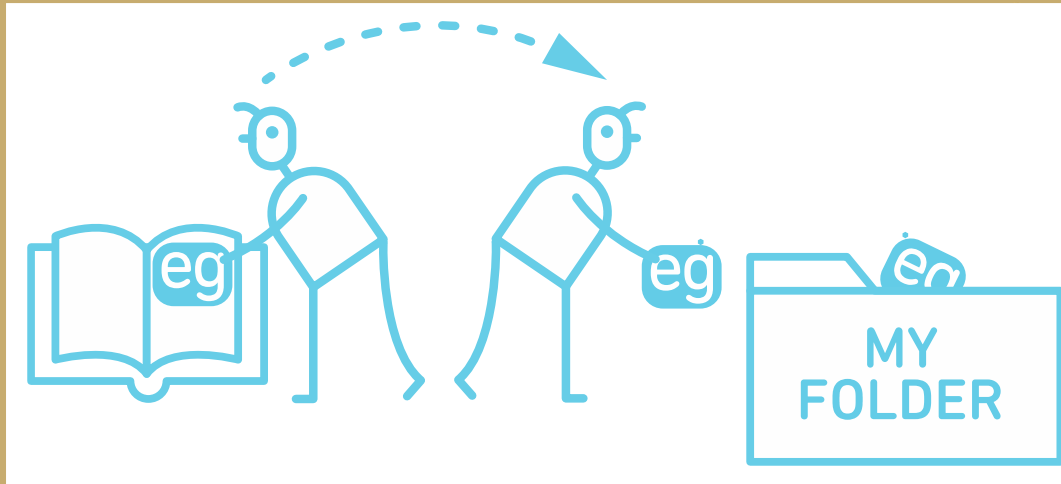


USE SPECIFIC EXAMPLES TO UNDERSTAND  
ABSTRACT IDEAS

Concrete Examples



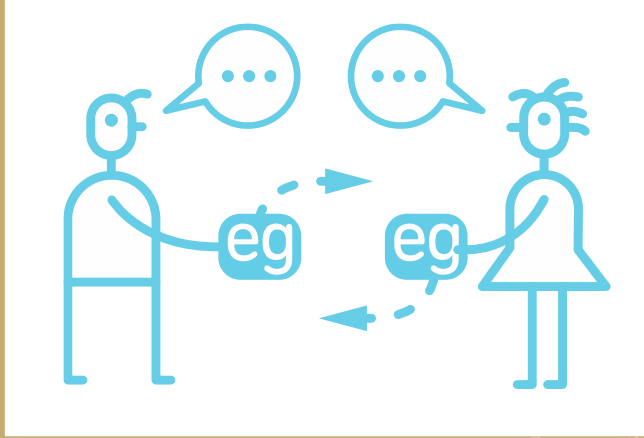
LYMM  
HIGH SCHOOL



# Concrete Examples



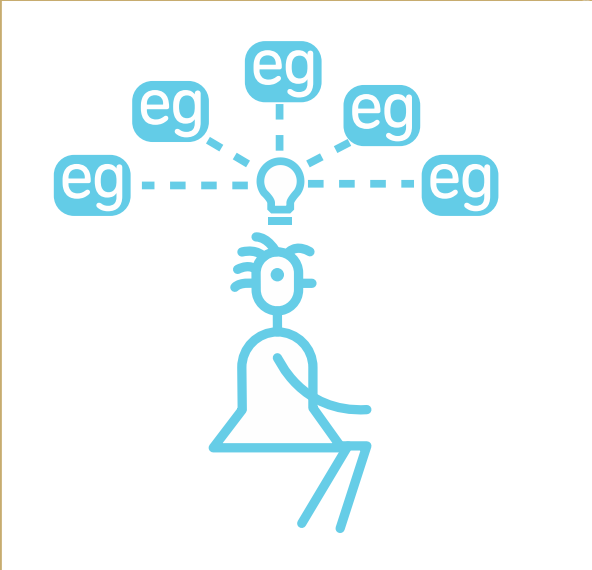
LYMM  
HIGH SCHOOL



# Concrete Examples



LYMM  
HIGH SCHOOL



# Concrete Examples





LYMM  
HIGH SCHOOL

# WAYS TO USE CONCRETE EXAMPLES

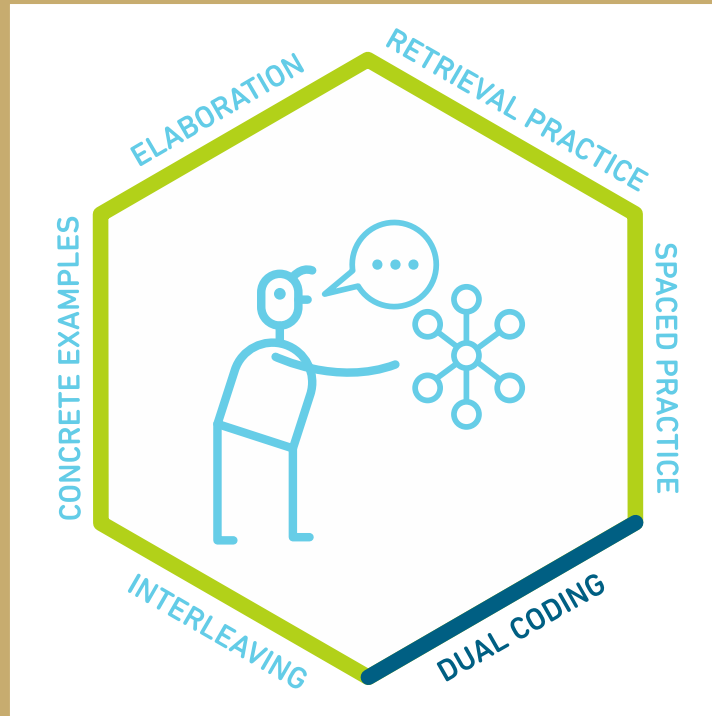
- MODEL ANSWERS
- MOCK PAPERS/PRACTICE PAPERS
- CLASS NOTES
- RECOMMENDED WEBSITES
- RECOMMENDED REVISION SITES
- EXAM BOARD WEBSITES

CAUTION - INTERNET

Concrete Examples



LYMM  
HIGH SCHOOL

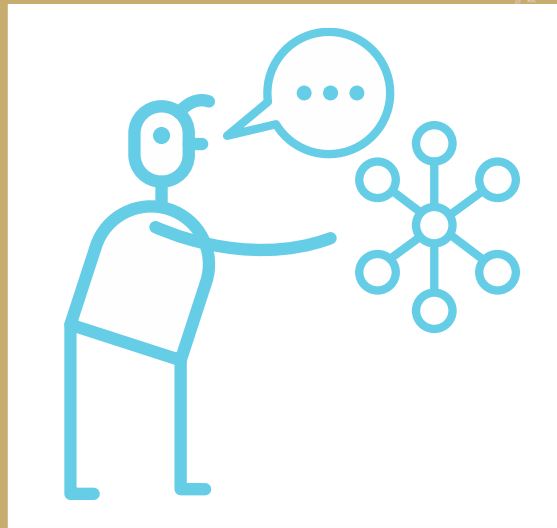
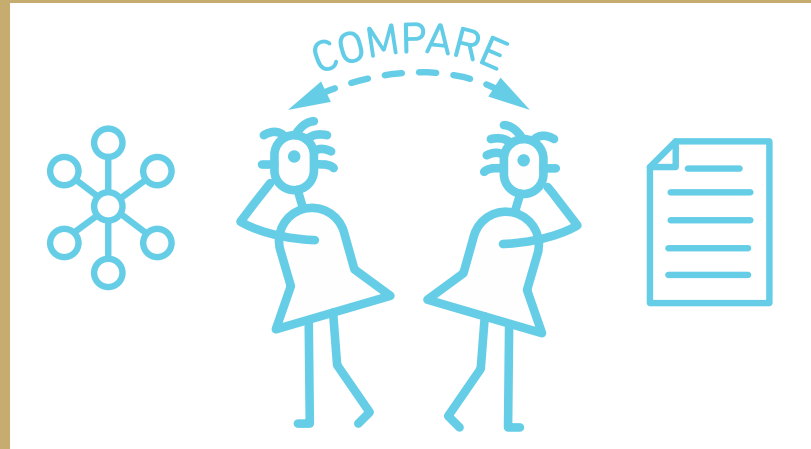
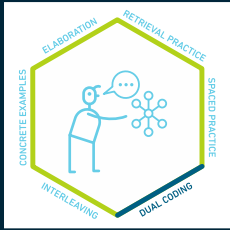


COMBINE WORDS AND VISUALS

Dual Coding



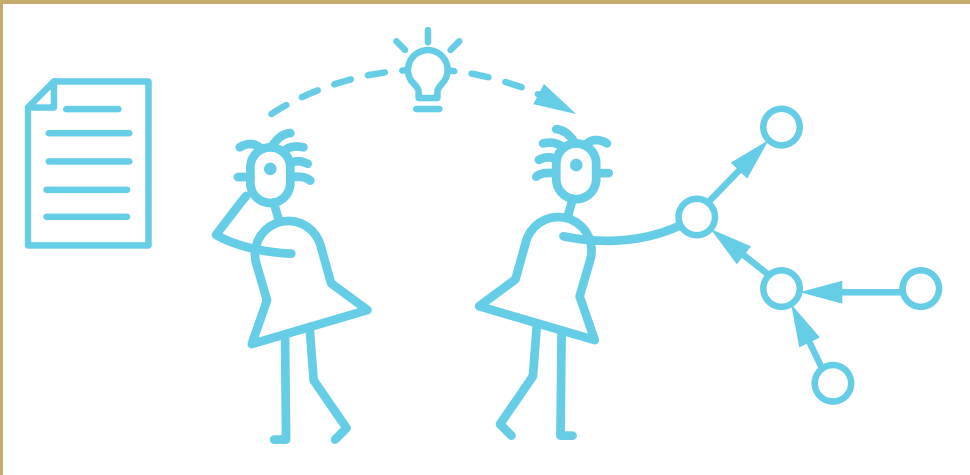
LYMM  
HIGH SCHOOL



# Dual Coding

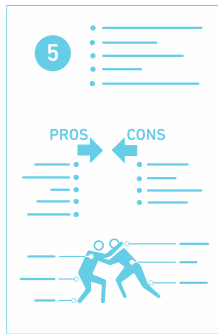


LYMM  
HIGH SCHOOL

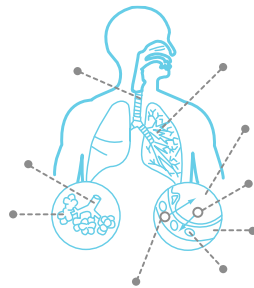


# Dual Coding

INFOGRAPHIC



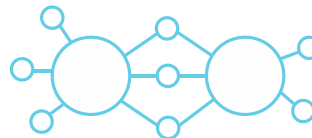
DIAGRAM



CARTOON STRIP



GRAPHIC ORGANIZER

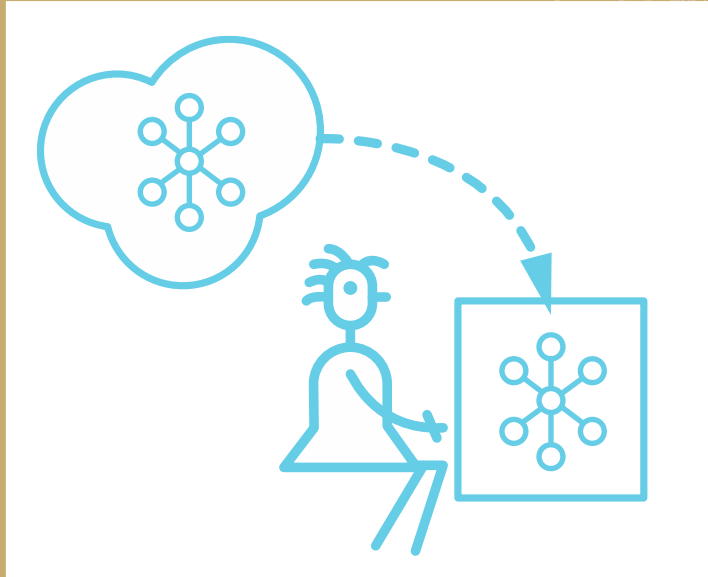
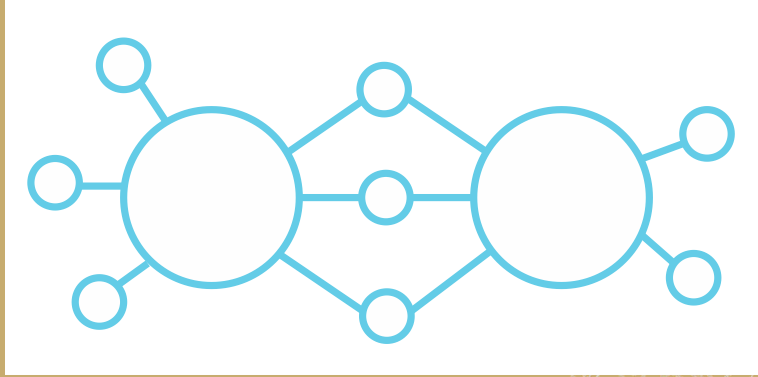


TIMELINE





LYMM  
HIGH SCHOOL



# Dual Coding



LYMM  
HIGH SCHOOL

# WAYS TO USE DUAL CODING

- INFOGRAMS
- DIAGRAMS
- TIMELINES
- CARTOON STRIPS
- GRAPHIC ORGANISERS



Dual Coding



LYMM  
HIGH SCHOOL

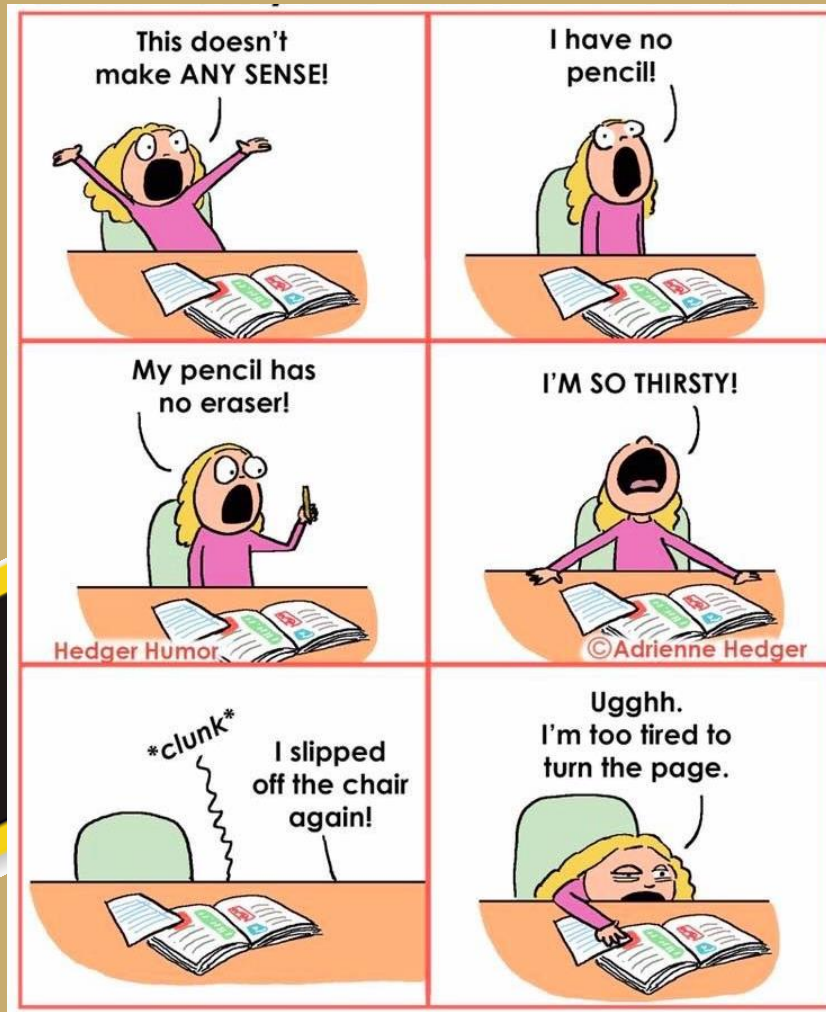


Further support





LYMM  
HIGH SCHOOL



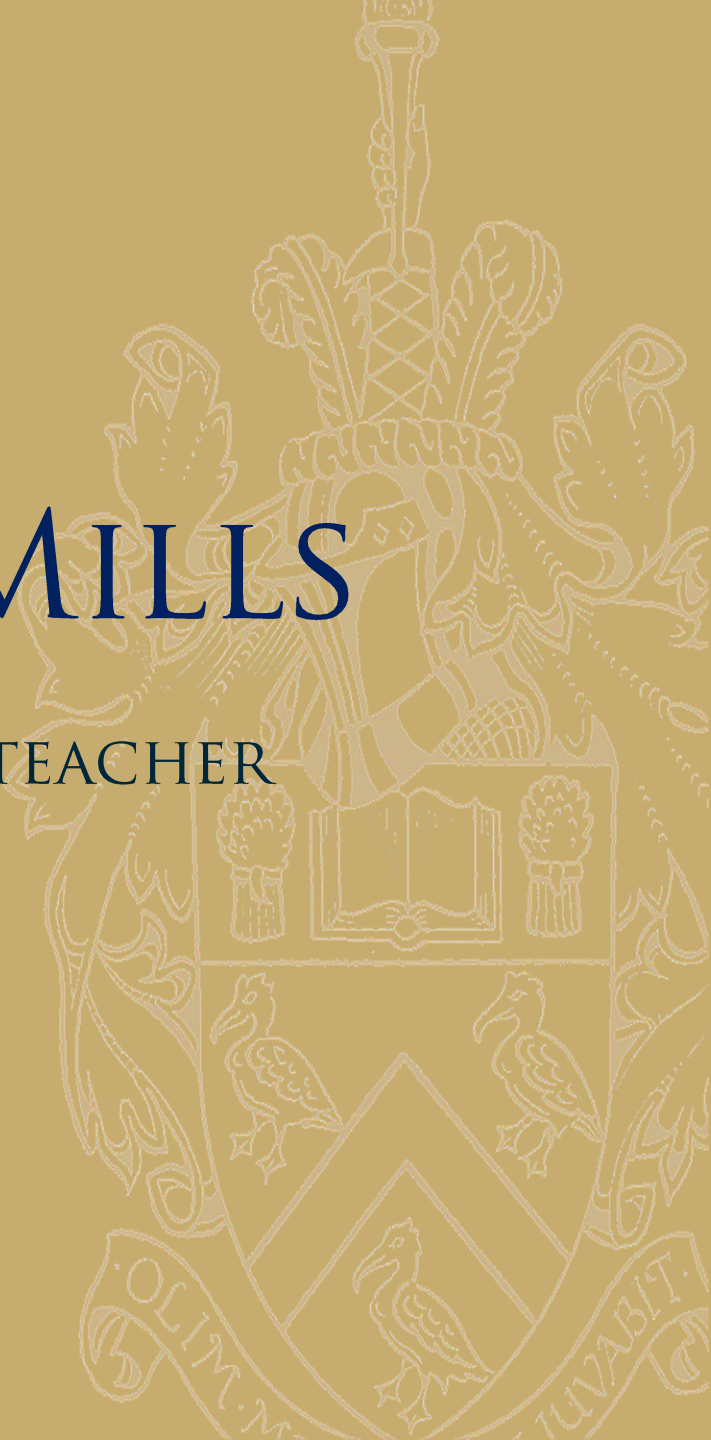




LYMM  
HIGH SCHOOL

MRS E MILLS

DEPUTY HEADTEACHER





LYMM  
HIGH SCHOOL

# DO YOU FEEL A PANG IN YOUR STOMACH WHEN YOU THINK OF YOUR CHILD'S UPCOMING GCSE EXAMS?

YOU'RE NOT ALONE, EVERY YEAR COUNTLESS  
PARENTS OF GCSE STUDENTS WORRY ABOUT  
THE EXAMS.





LYMM  
HIGH SCHOOL

TESTS AND EXAMS, INCLUDING GCSEs, CAN BE A CHALLENGING PART OF SCHOOL LIFE FOR BOTH CHILDREN AND PARENTS.

BUT THERE ARE WAYS TO EASE THE STRESS.





LYMM  
HIGH SCHOOL



7 SECOND  
MEDITATION



WELLMIND



5 WAYS TO BETTER  
WELLBEING



CALM



COLOUR  
THERAPY



WHAT'S UP?



SLEEP BETTER



AURA  
MINDFULNESS



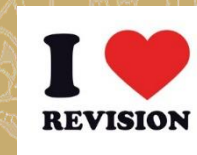
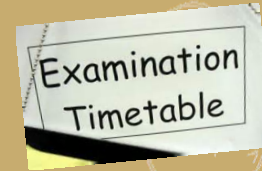
HAPPIER



LYMM  
HIGH SCHOOL

# TOP TIPS

- LET US KNOW
- FOOD
- SLEEP
- REVISION
- SPACE
- DISCUSSION
- EXERCISE
- POSITIVITY
- TREATS





**LYMM**  
HIGH SCHOOL

# BEATING STRESS

ULTIMATELY, DON'T LOSE SIGHT OF THE FACT THAT THERE IS LIFE AFTER EXAMS. THINGS MIGHT FEEL LIKE THE NEXT EIGHT MONTHS ARE GOING TO BE INTENSE, BUT IT WON'T LAST FOREVER

USEFUL WEBSITE  
[WWW.STRESSBUSTING.CO.UK](http://WWW.STRESSBUSTING.CO.UK)



LYMM  
HIGH SCHOOL

# RELAXATION TIPS

- DEEP BREATHING EXERCISES
- DEEP MUSCLE RELAXATION
- MEDITATION
- VISUAL IMAGERY





LYMM  
HIGH SCHOOL

**‘WORRYING IS LIKE A ROCKING HORSE  
IT WILL GIVE YOU SOMETHING TO DO  
BUT IT WILL GET YOU NOWHERE’**







LYMM  
HIGH SCHOOL

THANK YOU FOR  
COMING

HAVE A SAFE JOURNEY  
HOME

