

Approved Activity Providers (AAPs) are organisations whose Volunteering section opportunities have been approved by the DofE as meeting our sectional conditions and can count towards the achievement of a DofE Award.

AAPs are able to provide Assessors and sign off the section.

You can confidently use these organisations but please remember that it is the Licensed Organisation which has the final say on the suitability of a programme in terms of health and safety requirements and the DofE can give no assurances as to the financial stability of an AAP.

- For a full list of Volunteering AAPs go to: [DofE.org/aapvol](http://DofE.org/aapvol)
- For a list of volunteering opportunities: [DofE.org/volops](http://DofE.org/volops)



## Aldridge Airport Outdoor Pursuits

[cms.walsall.gov.uk/  
outdoor\\_pursuits](http://cms.walsall.gov.uk/outdoor_pursuits)

Aldridge Airport Outdoor Centre is owned by Walsall Council and offers opportunities for DofE Expeditions, Residentials and Volunteering.

## Environmental Volunteer

There is a range of volunteer

opportunities around the Aldridge Airport site.

**Age:** 13+

**Category:** Environment and Conservation

**Where:** Walsall

**When:** Flexible

**T:** 01922 744637



## Beanstalk

[beanstalkcharity.org.uk](http://beanstalkcharity.org.uk)

Beanstalk is a national charity that provides one-to-one literacy support to children who struggle with their reading ability and confidence. Volunteering with Beanstalk through their ReadUp scheme is the perfect opportunity for any DofE

participant to develop their skills, build experience and undertake volunteering in their local community.

## Reading-Up Volunteers

ReadUp is straightforward, structured and fits in easily around the busy schedule of any student. Each volunteer works with two children in a local primary school who are falling behind with their reading skills, volunteering for a total of one hour per week.

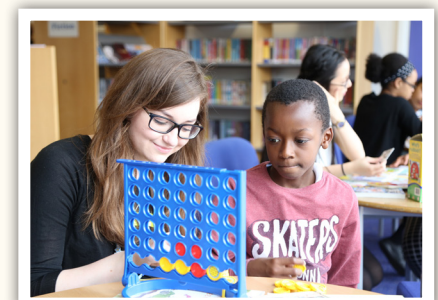
**Age:** 16+

**Category:** Helping Others

**Where:** UK Wide

**When:** Flexible

**T:** 020 7749 7965





## Blue Cross

[bluecross.org.uk](http://bluecross.org.uk)

Blue Cross find happy homes for abandoned or unwanted pets and keep pets healthy by promoting welfare and providing treatment in their centres.

### Retail volunteer

**Age:** 14+  
**Category:** Charity Shop  
**Where:** England  
**When:** Flexible

Blue Cross has a wide range of volunteer roles including assisting customers in the shop, sorting donations and working on the till.

Blue Cross has a wide range of volunteer roles supporting the team with looking after pets in their care.

T: 0300 777 1897  
[bluecross.org.uk/volunteer](http://bluecross.org.uk/volunteer)



### Centre Assistant

**Age:** Varied by centre, please contact for more information  
**Category:** Charity Shop  
**Where:** UK wide  
**When:** Flexible



## British Heart Foundation

[bhf.org.uk](http://bhf.org.uk)

BHF's task is clear: to keep hearts beating by leading the fight against heart disease. BHF are the UK's heart charity and are dedicated to the fight the UK's single biggest killer.

### Retail volunteer

**Age:** 15+  
**Category:** Charity Shop  
**Where:** UK wide  
**When:** Flexible

BHF has a wide range of volunteer roles in BHF shops and Furniture & Electrical stores, including window dressing, customer service, warehouse operatives, sales and administration.

Contact Sue George:  
T: 07919 394557  
E: [georges@bhf.org.uk](mailto:georges@bhf.org.uk)  
or contact your local shop.

### Fundraiser

**Age:** 14+  
**Category:** Helping people  
**Where:** UK wide  
**When:** Flexible – you decide

Decide upon a weekly fundraising activity or volunteer by campaigning and planning in the lead up to your fundraising event. Check out the BHF website for fundraising tips and resources.

T: 0300 330 3322  
W: <http://tinyurl.com/qattwoq>



## British Red Cross

[redcross.org.uk](http://redcross.org.uk)

The British Red Cross is part of the largest humanitarian organisation in the world. The British Red Cross aim to help people, whoever and wherever they are, in times of a crisis.

### Retail volunteer

**Age:** 15+  
**Category:** Charity Shop  
**Where:** UK wide  
**When:** Flexible  
Are you a rummager with a flair

for finding hidden treasures? Or do you enjoy a chinwag and meeting new people? If the answer's yes, then volunteer in one of our shops.

**E:** [GMountain@redcross.org.uk](mailto:GMountain@redcross.org.uk)  
or contact your local shop.

### Peer educator

**Age:** 15+  
**Category:** Community and global action  
**Where:** UK wide  
**When:** Flexible

Train to be a Red Cross peer educator and be able to put your newly learnt skills to work

and peer educate others in humanitarian education e.g. first aid, emergency response or HIV.  
[redcross.org.uk/lifelineit](http://redcross.org.uk/lifelineit)

### Fundraiser

**Age:** 15+  
**Category:** Helping people  
**Where:** UK wide  
**When:** Flexible – you decide

Do you have a brilliant fundraising idea for the British Red Cross? If so, you and your friends could win £100 to make your idea a reality.

For how to apply go to website:  
[redcross.org.uk](http://redcross.org.uk)



## Canal and River Trust

[canalrivertrust.org.uk](http://canalrivertrust.org.uk)

The Canal and River Trust are a charitable trust that was set up to look after the waterways of

England and Wales.

On top of maintaining 2,000 miles of canals and rivers, they are responsible for an enormous network of bridges, embankments, towpaths, aqueducts, docks and reservoirs and more. They also improve towpaths for cyclists and create new wildlife habitats to maintain infrastructure.

## Conservation Volunteer

There is a wide variety of conservation based opportunities around the canal and river network.

**Age:** 13+

**Category:** Conservation

**Where:** UK wide

**When:** Flexible

**T:** 0303 040 4040



## Cats Protection

[cats.org.uk](http://cats.org.uk)

Cats Protection is the UK's leading feline welfare charity. Our vision is a world where every cat is treated with kindness and an understanding of its needs. We help cats through homing, neutering and information.

### Cat care volunteer

**Age:** 14+

**Category:** Animals

**Where:** UK wide

**When:** Flexible

As a Cat Care volunteer you will be helping cats and kittens in our care. Providing them with hands-on care you will play an important role in keeping the cats and kittens happy and healthy.

### Shop assistant volunteer

**Age:** 16+

**Category:** Charity Shop

**Where:** UK wide

**When:** Flexible

Assist with the day to day running of our shops and you will be a key part in raising much needed money to support the great work Cats Protection, helping thousands of cats and kittens get a second chance in life.

### Fundraiser

**Age:** 16+



**Category:** Helping people

**Where:** UK wide

**When:** Flexible

Working in a team of friendly, enthusiastic volunteers, you will play a key part in raising money and awareness through local fundraising events and activities.

**E:** [volunteering@cats.org.uk](mailto:volunteering@cats.org.uk)

**W:** <http://to.ly/Un4E>



The  
Children's  
Society

## The Children's Society

[childrenssociety.org.uk](http://childrenssociety.org.uk)

The Children's Society is a national charity that runs local projects, helping children and young people when they are at their most vulnerable, and have nowhere left to turn.

### Retail volunteer

**Age:** 14+  
**Category:** Charity shop  
**Where:** England  
**When:** Flexible

The Children's society has a wide range of volunteer roles including assisting customers in the shop, sorting donations and working on the till.

**T:** 0207 841 4602  
**W:** <http://to.ly/X2vL> or contact your local shop

### Fundraising volunteer

**Age:** 14+  
**Category:** Community and Global Action  
**Where:** England  
**When:** Flexible

Whether you want to organise a run, are fundraising as a group at your school or church, or simply want to see how you can get involved, we have ideas and resources to support you.

**T:** 0207 841 4602  
**W:** <http://to.ly/X2vN>



## The Cinnamon Trust

[cinnamon.org.uk](http://cinnamon.org.uk)

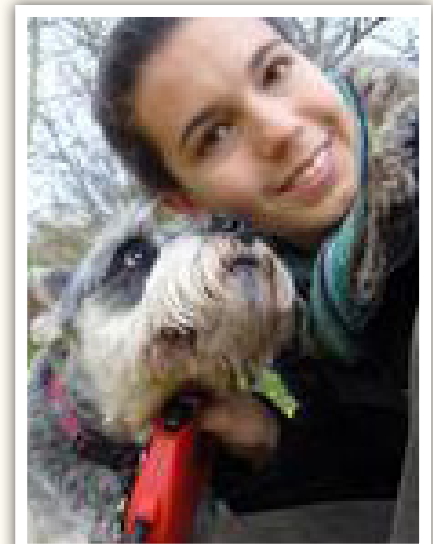
Cinnamon Trust's primary objective is to respect and preserve the treasured relationship between owners and their pets. Their national network of over 15,000 volunteers walk dogs for housebound owners.

### Dog walkers

**Age:** 14+  
**Category:** Animals  
**Where:** UK-wide  
**When:** Flexible – you decide

Love dogs? Want to help others in your community? Then volunteer as a dog walker for the Cinnamon Trust and you will be matched with an elderly person who needs regular help by walking their dog.

**T:** 01736 757 900  
**E:** [admin@cinnamon.org.uk](mailto:admin@cinnamon.org.uk)



## Compton Hospice

[compton-hospice.org.uk](http://compton-hospice.org.uk)

Compton Hospice is a Wolverhampton based charity which has been supporting patients facing a life-limiting illness, and their families, for 35 years. Their purpose is to

make a difference to people's lives when their illness is no longer curable. They do this by treating people, not conditions, whether their needs are physical, psychological, social or spiritual.

### Compton Champions

In this role you will be involved in campaigning and supporting the hospice in its work.

**Age:** 13+  
**Category:** Helping Others

**Where:** Staffordshire Area  
**When:** Flexible

### Fundraising Volunteer

In this role you will be organising and assisting with events and fundraising initiatives.

**Age:** 13+  
**Category:** Helping Others  
**Where:** Staffordshire Area  
**When:** Flexible

**T:** 01902 774 532



THE COUNTRYSIDE  
RESTORATION TRUST

## Countryside Restoration Trust

[countrysiderestorationtrust.com](http://countrysiderestorationtrust.com)

The Countryside Restoration Trust is the UK's leading charity promoting wildlife-friendly farming and campaigning for a living, working countryside.

### Volunteer Support Groups

**Age:** 14+

**Category:** Environment and conservation

**Where:** England

**When:** Flexible

Our Volunteer Support Groups play a vital role in conservation work, wildlife monitoring and organising events. Support Group working parties help with tree and hedge planting, painting gates, clearing scrub, erecting nest boxes etc.

**T:** 01223 262999

**E:** [info@countrysiderestorationtrust.com](mailto:info@countrysiderestorationtrust.com)



## Hoots Forever Home

[hootsforeverhome.com](http://hootsforeverhome.com)

Hoots Forever Home is a sanctuary specialising in owls and other birds of prey. All the volunteers are involved throughout the sanctuary; creating new habitats for our birds, improvements on the grounds, as well as displays within the community.

### Centre Support Volunteers

Volunteers help to support the everyday running of the sanctuary.

**Age:** 13+

**Category:** Animal Welfare

**Where:** Near Kilmarnock

**When:** Flexible – you decide

**T:** 07812389665



**Leonard  
Cheshire**

## Leonard Cheshire Disability

[leonardcheshire.org](http://leonardcheshire.org)

Leonard Cheshire Disability supports disabled people in the UK and around the world to fulfil their potential and live the lives they choose. They provide high quality care, access to education, employment and business opportunities, as well as campaigning for a world where everyone is treated equally.

### Befriender

**Age:** 13+

**Category:** Helping Others

**Where:** UK-wide

**When:** Flexible – you decide

You will support people in the social aspects of their lives. As little as one hour per week could make a massive difference to someone's life, whether it's having a chat, playing games, or venturing further afield to have fun in the community and attend events.

### Volunteer for a Leonard Cheshire Disability home

**Age:** 13+

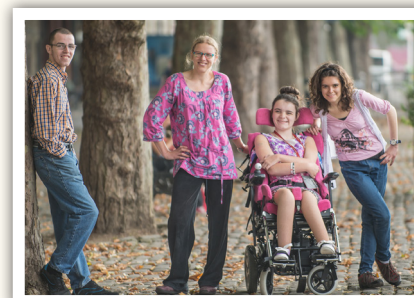
**Category:** Helping Others

**Where:** UK-wide

**When:** Flexible – you decide

The volunteer coordinator at the home will support you to plan and complete your DofE volunteering doing a variety of activities including organising events and fun activities.

**T:** 020 3242 0200





**london  
transport  
museum**

## London Transport Museum

[ltmuseum.co.uk](http://ltmuseum.co.uk)

London Transport Museum's Youth Travel Ambassador programme (YTA) engages young people to address travel and transport issues in London, empowering them to make a positive impact in their community.

## Youth Travel Ambassadors

**Age:** 14+

**Category:** Community and global action

**Where:** London

**When:** After school

Make a difference with teams of other young people through the YTA programme. Create your own bespoke educational campaigns and pitch for funding to make your ideas a reality!

**T:** 020 7379 6399

**E:** [yta@tfl.gov.uk](mailto:yta@tfl.gov.uk)



**NATIONAL  
ENERGY  
FOUNDATION**

## National Energy Foundation

[nef.org.uk](http://nef.org.uk)

The National Energy Foundation (NEF) is an independent charity which aims to give people and organisations the knowledge, support and inspiration to improve the use of energy in buildings.

## Energy Envoys

**Age:** 14+

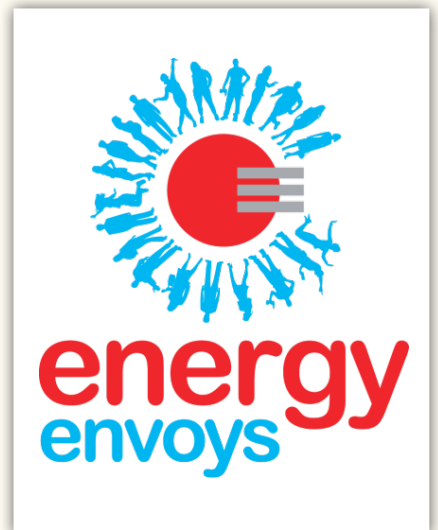
**Category:** Environment and conservation

**Where:** UK-wide

**When:** Flexible

Set up an exciting project to help your community use energy more wisely, save money and help to save the planet! Learn all about the big energy challenges of our time and how to tackle real-world energy problems.

[energyenvoys.org.uk](http://energyenvoys.org.uk)



**energy  
envoys**



**THE ORDERS OF  
ST JOHN  
CARE TRUST**

## The Orders of St John Care Trust

[osjct.co.uk](http://osjct.co.uk)

OSJCT is one of the largest not for profit providers of care to older people in the UK. Our range of care services includes residential, nursing and specialist dementia care, day care services, intermediate and respite care.

## Group activity planners

**Age:** 14+

**Category:** Arts, music & culture

**Where:** Care homes in Lincolnshire, Wiltshire, Oxfordshire and Gloucestershire.

**When:** Flexible

A fantastic opportunity for a group of friends to plan and run events and activities at our care homes, such as entertainment, gardening, arts & crafts, fundraising or a presentation.

- **Lincolnshire**  
**T:** 01522 813111  
**E:** [lincs@osjct.co.uk](mailto:lincs@osjct.co.uk)
- **Oxfordshire**  
**T:** 01993 323232;  
**E:** [oxon@osjct.co.uk](mailto:oxon@osjct.co.uk)
- **Gloucestershire**  
**T:** 01452 381118  
**E:** [glos@osjct.co.uk](mailto:glos@osjct.co.uk)

- **Wiltshire:**  
**T:** 01225 710700  
**E:** [wilts@osjct.co.uk](mailto:wilts@osjct.co.uk)

## Volunteer assistants

**Age:** 16+

**Category:** Helping people

**Where:** Care homes in Lincolnshire, Wiltshire, Oxfordshire and Gloucestershire.

**When:** Flexible

Volunteers can help with social activities, assist on outings, run the shop or library trolley and also offer companionship and befriending to residents.

**T:** Contact details as above



## Oxfam

[oxfam.org.uk](http://oxfam.org.uk)

Oxfam is a global movement of people who share the belief that, in a world rich in resources, poverty isn't inevitable. It's an injustice which can, and must, be overcome. Find Oxfam's opportunities here:

[oxfam.org.uk/get-involved/volunteer-with-us](http://oxfam.org.uk/get-involved/volunteer-with-us)

### Charity shop volunteer

**Age:** 14+

**Category:** Charity Shop

**Where:** UK wide

**When:** Flexible

Meet interesting people, boost your confidence and gain life-changing skills. There are countless exciting opportunities, including selling music online, merchandising vintage clothes and researching books. Contact your local Oxfam shop.

### Youth Ambassador

**Age:** 14+

**Category:** Community and global action

**Where:** UK wide

**When:** Flexible

Be part of the movement to overcome poverty and suffering, and gain a Youth Ambassadors badge. As a Youth Ambassador, Oxfam will help you put your ideas into action and make them a reality, whether that's holding a school assembly or event, getting in your local paper, meeting your MP or going to parliament.

**E:** [education@oxfam.org.uk](mailto:education@oxfam.org.uk)

**W:** <http://to.ly/EMUT>



## parkrun

[parkrun.org.uk](http://parkrun.org.uk)

parkrun is a not-for-profit organisation which arranges free, weekly runs of 5k and 2k (only for juniors) around the UK. They are open to everyone, free, and are safe and easy to take part in.

### parkrun event volunteers

**Age:** 14+

**Category:** Sports & Recreation

**Where:** UK-wide

**When:** Usually Saturday and Sunday mornings

Volunteer on your own or with a group to help with the free 5k runs across the country every Saturday, as well as junior parkruns on Sundays. Roles include marshalling, timing and tail running to ensure all runners have completed.

**Contact:** [parkrun.org.uk/events](http://parkrun.org.uk/events)



## PDSA

[pdsa.org.uk](http://pdsa.org.uk)

Each year PDSA provides more than 2.3 million free treatments to sick and injured pets and more than 420,000 preventive treatments. PDSA's services are run by the hard-working vets and nurses at our PetAid hospitals.

Find all of PDSA's opportunities here: <http://tiny.cc/fgezix>

### Charity shop volunteer

**Age:** 14+

**Category:** Charity Shop

**Where:** UK wide

**When:** Flexible

If you love meeting people your smile will be just the thing to welcome our customers. Perhaps you love displaying things? Our windows need you! And let's not forget our stock preparers who get everything ready for sale. Contact your local PDSA shop

### Fundraiser

**Age:** 14+

**Category:** Helping people

**Where:** UK wide

**When:** Flexible – you decide

Our volunteers put the fun in fundraising, encouraging people to part with their cash at everything from sponsored events to dog shows and collections. Why not gather some animal loving friends and get started?

For more information about fundraising with PDSA <http://tinyurl.com/noqx62p>



## Peterborough District Football League

<http://tinyurl.com/z54sgou>

Peterborough District Football League offers a variety of

volunteering roles supporting football match days.

### Match Day Support

**Age:** 14+

**Category:** Sports and Recreation and IT, Technology and Administration Skills

**Where:** Peterborough

**When:** Weekends

Tasks include taking pictures and social media roles.

**T:** 01733 330056



## Raleigh International

[raleighinternational.org](http://raleighinternational.org)

Raleigh is a youth and education charity established in 1984 and runs adventure and challenge expeditions for 17-24 year olds (venturers) from a wide range of backgrounds, nationalities and life stages.

### Project campaigner and fundraiser

**Age:** 18+

**Category:** Helping people

**Where:** In your community

**When:** Flexible

Completing your residential with Raleigh? Then why not fundraise for the project you will be helping before you go and engage your local community, school etc. via presentations and campaigning when you return.

**T:** 0207 183 1275

**E:** [info@raleigh.org.uk](mailto:info@raleigh.org.uk)



## The Reading Agency

[readingagency.org.uk](http://readingagency.org.uk)

We are a charity whose mission is to give everyone an equal chance in life by helping people become confident and enthusiastic readers. Because everything changes when we read.

### Summer Reading Challenge

**Age:** 14+

**Category:** Children, Arts, music & culture

**Where:** Your local library

**When:** Flexible

The Summer Reading Challenge encourages children aged 4 to 11 to read six books during the long summer holiday. Volunteer to help plan and run the challenge in your local library, then continue volunteering there after the summer.

**T:** 020 7324 2551

**E:** [nici.west@reading.agency.org.uk](mailto:nici.west@reading.agency.org.uk)







## Rolladome

[rolladome.org.uk](http://rolladome.org.uk)

Rolladome offer roller skating to people of any age to try and encourage people to take part in this non-traditional sport, keep fit and healthy and to learn a new skill.

## Roller Skating Volunteer

**Age:** 14+

**Category:** Sports and Recreation

**Where:** London

**When:** Flexible

Tasks include peer mentoring, sports coaching and support, fundraising, communications and marketing tasks.

**T:** 020 8838 1171  
020 8978 3760

**E:** [admin@rolladome.org.uk](mailto:admin@rolladome.org.uk)

**W:** [rotarygbi.org](http://rotarygbi.org)



## Riding for the Disabled Association

[rda.org.uk](http://rda.org.uk)

At RDA, our horses and ponies provide therapy, achievement and enjoyment to people with disabilities all over the UK. Our network organises activities for up to 28,000 people each year.

## RDA Volunteer

**Age:** 12+

**Category:** Helping people, Animals

**Where:** At your local RDA group

**When:** Flexible

Do you love horses, ponies and helping people?

Support individuals with a disability to take part in riding, carriage driving or vaulting at your local RDA group.

**E:** [volunteer@rda.org.uk](mailto:volunteer@rda.org.uk)



## Royal Voluntary Service

[royalvoluntaryservice.org.uk](http://royalvoluntaryservice.org.uk)

RVS is a national charity delivering practical support for older people through the power of volunteering, with 45,000 volunteers working throughout England, Scotland and Wales.

## Community café volunteer

**Age:** 14+

**Category:** Helping people

**Where:** Community cafes and hospitals.

**When:** Flexible

Café volunteers are needed to serve refreshments to visitors and offer a friendly and sociable environment for older people to enjoy. This is ideal if you want to make new friends and gain experience in a catering environment while enriching the lives of older people.

**T:** 0845 608 0122

## Community club volunteer

**Age:** 14+

**Category:** Sports & Recreation

**Where:** Various

**When:** Depends upon club

Community club volunteers are needed to help organise and lead activity sessions at local centres to offer older people the opportunity to meet others and enjoy regular social engagements.

**T:** 0845 608 0122

Find all of RVS' volunteering opportunities here:

<http://to.ly/EMUT>

# Rotary



## Rotary

[rotarygbi.org](http://rotarygbi.org)

Rotary clubs utilise the skills, expertise and dedication of their members to help improve the lives of people in communities both at home and abroad.

## Interact

**Age:** 12-18

**Category:** Helping people

**Where:** UK-wide.

**When:** Ask your local club

Interact clubs are where volunteers work together helping others in their communities and across the world, whilst having fun and learning about the world. They are based in secondary schools or colleges

and organise at least two service projects a year.

**T:** 01789 765 411

**W:** <http://rotarygbi.org/>



## RSPB

[rspb.org.uk](http://rspb.org.uk)

The RSPB is a UK charity working to secure a healthy environment for birds and all wildlife.

It is the largest nature conservation charity in the country, consistently delivering successful conservation, forging

powerful new partnerships with other organisations and inspiring others to stand up and give nature the home it deserves.

## Giving Nature a home

Volunteers help to deliver activities at events and sessions in schools with the purpose of re-connecting children and families with nature in Cardiff.

**Age:** 13+

**Category:** Animal Welfare

**Where:** Cardiff

**When:** Flexible

**T:** 01767 680551

## Pin badge collecting

Volunteers help to manage pin badge boxes to raise money to help save our wildlife.

**Age:** 13+

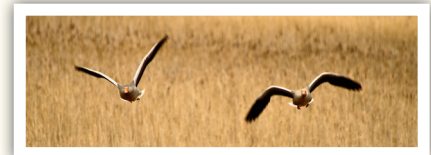
**Category:** Animal Welfare

**Where:** South and West Scotland

**When:** Flexible

**T:** 0141 331 9805

**E:** [Louise.conn@rspb.org.uk](mailto:Louise.conn@rspb.org.uk)



## The Shaw Trust

[shaw-trust.org.uk](http://shaw-trust.org.uk)

Shaw Trust is a national charity providing employment opportunities, skills development training and health and well-being services across the UK. They operate charitable social enterprises and retail shops around the UK.

## Supporting Others Volunteer

**Age:** 14+

**Category:** Helping People

**Where:** UK Wide

**When:** Flexible

Tasks include helping people with disabilities in their job search providing support and encouragement.

## Retail volunteer

**Age:** 14+

**Category:** Charity Shop

**Where:** England

**When:** Flexible

Tasks include helping customers, stock preparation, till use (age depending) and administrative tasks.

**T:** 0300 247 2222



## St Barnabas Hospice

[stbarnabas-hospice.org.uk](http://stbarnabas-hospice.org.uk)

St Barnabas House is a local independent charitable hospice located in Worthing, Sussex, looking after adults who are approaching the end of their lives. They also run four charity shops locally.

### Community Companion

**Age:** 16+

**Category:** Helping People

**Where:** Worthing, Sussex

**When:** Flexible

St Barnabas House volunteers help by visiting and befriending in the local community. If you are interested in a career in healthcare, medicine or just like being with people, this could be a fantastic, well supported opportunity for you.

### Charity Shop volunteer

**Age:** 14+

**Category:** Charity Shop

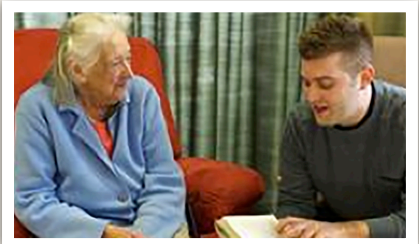
**Where:** Worthing, Arun, Adur, Henfield

**When:** Flexible

We welcome volunteers from the age of 14 upwards to help in our charity shops in Worthing, Arun, Adur and Henfield.

**T:** 01903 706315

**E:** [volunteers@stbh.org.uk](mailto:volunteers@stbh.org.uk)



## Sustrans

[sustrans.org.uk](http://sustrans.org.uk)

Sustrans makes smarter travel choices possible, desirable and inevitable. We're a leading UK charity enabling people to travel by foot, bike or public transport for more of the journeys we make every day.

### Active Travel Champions

**Age:** 14+

**Category:** Environment and conservation

**Where:** In your community or school

**When:** Flexible

Active travel champions give advice about walking and cycling and/or set up walking and cycling activities in their local community, workplace, university or school.

**E:** [volunteers-uk@sustrans.org.uk](mailto:volunteers-uk@sustrans.org.uk)



## Village by Village

[villagebyvillage.org.uk](http://villagebyvillage.org.uk)

Village by Village's mission is to reduce the needless suffering and deaths of children living in poverty in remote rural African villages.

### Project fundraiser

**Age:** 17+

**Category:** Community and global action

**Where:** UK wide

**When:** Flexible – you decide

Completing your Residential with Village by Village? Then why not fundraise to donate to the project that you'll be volunteering your time at.

**T:** 0161 900 6304

**E:** [neil@villagebyvillage.org.uk](mailto:neil@villagebyvillage.org.uk)

### Support a child or project in Ghana

**Age:** 14+

**Category:** Helping people

**Where:** UK wide

**When:** Flexible – you decide

Get adventurous, creative or sporty to fundraise for Village by Village to help support a child or project in Ghana. You will get a personalised photo to say thank you.

**T:** 0161 900 6304

**E:** [neil@villagebyvillage.org.uk](mailto:neil@villagebyvillage.org.uk)



## Wiltshire Wildlife Trust

[wiltshirewildlife.org](http://wiltshirewildlife.org)

We are the only organisation concerned with all aspects of the environment in Wiltshire and Swindon. We care passionately about wildlife and conserving our natural heritage.

### Wildlife volunteer

**Age:** 15+

**Category:** Environment and conservation

**Where:** England

**When:** Flexible

From looking after our reserves and surveying wildlife to running Local Supporter Groups, leading children's Watch Groups, helping with fundraising and membership, carrying out vital conservation tasks or stewarding at large events, our volunteers support everything that we do.

**T:** 01380 725670

**E:** [info@wiltshirewildlife.org](mailto:info@wiltshirewildlife.org)



### YHA

[yha.org.uk](http://yha.org.uk)

YHA provides budget accommodation for individuals, families and groups. We aim to inspire all, especially young people, to broaden their horizons, gain knowledge and independence.

### YHA volunteer

**Age:** 14+

**Category:** Helping people

**Where:** England and Wales

**When:** Flexible

YHA are inviting young people to volunteer! Roles at your local hostel include café work, reception, gardening and housekeeping. Roles at National Office include administration work and fundraising.

**T:** 01629 592 562

**E:** [volunteers@yha.org.uk](mailto:volunteers@yha.org.uk)

Or speak to your local hostel

