

SIXTH FORM



LYMM

SIXTH FORM

“

A' level students made
some of the **strongest**
rates of progress across
the whole country.

Ofsted 2018

”



HEADTEACHER'S WELCOME



Dear Student,

If you are a Year 11 student at Lymm High School, you will already know what a great position the school is now in. We are proud to be able to say that we have had the best results in the school's history over the last couple of years, which is just one indication of the extent to which we are flourishing. It is an exciting time for the school and we will continue to go from strength to strength.

The Sixth Form is no different. A' level results were exceptionally strong over the last few years, and our sixth formers love studying here. Staying with us for your post-16 studies means you can be sure that you will gain the best academic qualifications, surrounded by people who already know and love you.

If you are not currently studying at Lymm High School, then you must not take our word for it when we tell you what a fabulous place it is to study; come and visit us to see for yourself. We have beautiful grounds and excellent facilities but, above all, we have a group of very well-qualified and committed staff who are waiting to help you make the most of your time here.

Our priorities are simple. Firstly, we will make sure you get the excellent examination results you need to access the best universities. Secondly, we provide an extensive, high quality programme of extra-curricular activities and trips to enable you to enjoy yourself and to develop into well-rounded young adults. We don't complicate things and we don't spend all our time marketing ourselves at the expense of focusing on those very important priorities.

Lymm High School is a large school with a large sixth form and this allows us to provide the best of all worlds for our post-16 students. On the one hand, we are big enough to provide a wide range of courses, a vibrant enrichment programme, exciting social life and plenty of independence. On the other hand, we are small enough to know our students as individuals and to provide them with the necessary support and challenge to ensure that they all reach their full potential.

Gwyn Williams
Headteacher



A VERY
WARM WELC



I feel so fortunate to be able to lead a sixth form that achieves excellent results, offers bespoke pastoral care and provides the endless leadership and extra-curricular opportunities that give our young people the very best possible sixth form experience.

As a school, we continue to be incredibly proud of our results and our student destinations reflect a variety of different successes, from those securing spots at Oxbridge and Russell Group universities to those gaining places on highly sought after apprenticeships and employment schemes.

Joining us from our main school is the natural next step for current students and is what the vast majority tend to choose; they clearly recognise that beginning challenging new courses is best done in an environment where staff already know them and care about them. At the same time, we always welcome applications from students in other schools and we make it our mission to ensure that these new students are guided through their transition carefully. All students will be fully supported in making decisions, through careers advisor meetings, form tutor interviews and attendance at our open evening.

We have high expectations of all of our students and we are passionate about supporting them through the next stage of their development. We do this so successfully by treating all students as young adults and giving them the appropriate level of independence required, but by also providing adequate structure and involving parents and carers to ensure the very best support is given to each individual.

If you choose to become a student at Lymm you will become a member of the Lymm family, not just for the duration of your time with us, but for life.

Mrs H Jennings
Assistant Headteacher - Head of Sixth Form

TOP 15%

in the country for A' level progress.

40%

of all sixth form students went to Russell Group universities in 2019

OVER 30

subjects and courses to choose from

PERFECT

balance between independence and support to allow preparation for adult life

SPECIALIST

support from experienced staff when it comes to university and/or job applications

EXTENSIVE

opportunities to become involved in enrichment projects, trips and leadership

WHY
LYMM?

Reasons to choose Lymm Sixth Form





STUDENT LIFE

MAKING THE MOST OF YOUR TIME

The opportunities we offer to broaden both your academic and personal experiences at Lymm will sharpen your CV as well as enrich your time here.

Sixth form life is very different to any of the experiences you have had in Year 11. You are now able to focus on the subjects which matter the most to you and you begin to develop more independence, whilst making important decisions about your future.

At Lymm, we believe that pushing you to fulfil your academic potential is essential because it allows you the best chance of securing highly competitive university, apprenticeship and employment places.

However, we also believe that it is vital we help students develop into well-rounded, socially and morally responsible young adults, who are comfortable taking on leadership responsibilities.

Here at Lymm you will have ample opportunities to do this through our enrichment programme and our brilliant extra-curricular activities.

There are plenty of ways for you to take an active part in sixth form life.



These might be: organising trips, holding fund-raising events, delivering assemblies, being a subject ambassador, running activities in an area of your interest for students in the main school, or taking part in any of the following:

- Drama
- Sport
- Duke of Edinburgh Award Scheme
- Film Club
- First Aid
- Debate Club
- Sixth Form Newspaper
- Engineering Society
- Medical Society
- Music
- Fashion & Design
- Photography
- Short Film Production
- Student Council
- Voluntary Work
- Sixth Form Music Festival
- The Gateway Programme

LEADERSHIP

Students at Lymm enjoy a wealth of leadership opportunities. We are proud of the large numbers who hold positions of responsibility and actively involve themselves in such things as the school council, paired reading scheme and peer mentoring programmes.

Our student leadership team take the lead on many of these opportunities and are the driving force behind them.

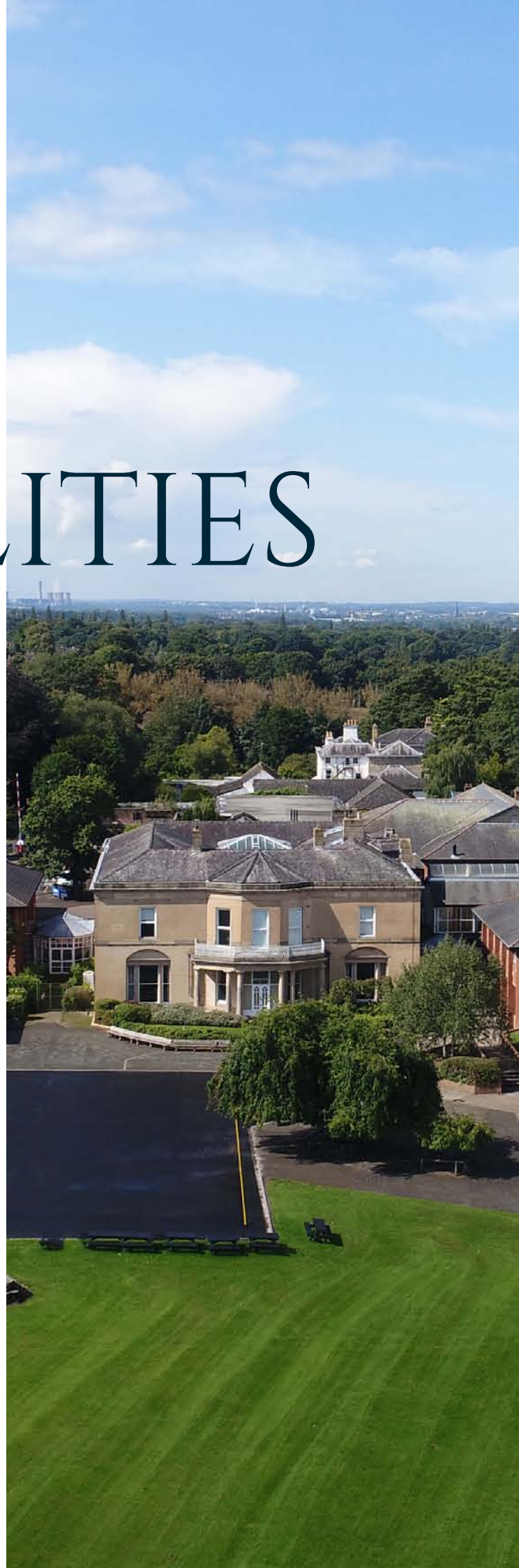
As a welcoming and inclusive sixth form, we truly value what our students think and we work in partnership with them to ensure our sixth form is the very best it can be.

Our student leadership team plays an active role in running social events, charity events and leading whole school 'student voice'.

THE FACILITIES

As a sixth form, we are fortunate to have our own independent learning space, including:

- A social/study area with ICT facilities
- Separate dining facilities for sixth form students
- Independent Learning Centre
- Two Apple Mac ICT suites
- Purpose built industrial-style kitchens
- Science laboratories
- Photography suite with dark room
- A fully equipped fitness suite
- Drama and dance studios







A TYPICAL DAY

The sixth form is open from 7:30am each morning and students are welcome to use the facilities to study during this time. Morning registration led by a form tutor is compulsory for all students and begins at 8.25am. Each day has five teaching sessions that are an hour in length and we run a two week timetable. In addition to timetabled lessons, students will have supervised study periods, to which attendance is compulsory, plus additional free study time that can be used for group work or further independent study. Students are able to leave school at 1.15pm providing they do not have timetabled lessons or supervised study periods.

TUTOR GROUPS

Each student is allocated a form tutor with whom they meet every morning for a twenty minute tutorial. The activities in these tutorials vary from attending year and hall group assemblies, completing the sixth form mindset tutorials, to having academic mentoring to support the information, advice and guidance students receive when making decisions about their futures. All students are also allocated to one of our school halls, allowing us to maintain close links with the main school and providing further leadership opportunities.

PASTORAL CARE

The Head of Sixth Form, Deputy Head of Sixth Form and Student Services Team provide outstanding support and advice for our young people. The sixth form also benefits from the support of an impartial careers advisor and two school counsellors.

DRESS CODE

Sixth form students are trusted role models for younger pupils. Demonstrating the highest of standards in appearance forms part of their leadership responsibilities. We expect our sixth form students to wear professional business dress to school at all times. Please visit the sixth form website for further details.

ATTENDANCE & PUNCTUALITY

We recognise that regular attendance is essential to secure the most positive outcomes for all. Attendance is therefore closely monitored by the sixth form team and parents are kept informed of any issues.

EXPECTATIONS

COURSE OVERVIEW

As you may already be aware, the structure of A' level qualifications has changed, with AS levels being 'de-coupled' from the old A2 levels and most subjects now converted to the new, linear A' level structure whereby external exams are sat at the end of two year courses. In common with many academic sixth forms, Lymm High Sixth Form now only offers the new linear A' levels – because we believe that this enables students to have the maximum time and energy available to focus on these end-of-course exams. Typically, students choose three subjects, but we do allow some students to study four subjects and this is something that can be discussed at interview.

To progress onto Level 3 courses, all students need five GCSE 4-9 grades, which must include English and Maths at grade 4 or above.

Please note that we cannot guarantee that specific courses listed in this prospectus will all run because they are subject to staffing requirements and student enrolment numbers. Courses will be confirmed at enrolment and updated on our website. If there is a course you would be very interested in studying but you do not see in this prospectus, please do let us know and we will consider how viable that might be.

- Art
- Biology
- Business Studies
- BTEC Business
- Chemistry
- Dance
- Economics
- English Language
- English Literature
- BTEC Fashion
- Geography
- BTEC Health & Social Care
- History
- BTEC Hospitality
- BTEC IT
- Mathematics
- Further Maths
- Media
- Modern Foreign Languages
- Music
- Music Technology
- PE
- Philosophy & Ethics
- Photography
- Physics
- Product Design
- Psychology
- Sociology
- BTEC Sport
- Theatre Studies

ART

WHY STUDY THIS COURSE?

Candidates choosing A' level Fine Art have the opportunity to follow an exciting two year course that integrates practical, critical and theoretical study. You will be given the chance to work with a wide variety of media and processes, and thus experience art in the broadest sense from 2D to 3D.

COURSE DETAILS

Qualification: A' level Fine Art

Awarding Body: AQA

Entry Requirements: 5

GCSE grades 4-9 including both English Language and Maths, plus GCSE grade 5 (or equivalent) in an art related course

At each stage, the course is designed to build on and extend skills, enabling learners to become more confident and independent in their practice. Students will enjoy opportunities to build on knowledge, skills and understanding of media and processes gained through gallery and museum visits, artist workshops, life drawing opportunities and have access to exhibit work in both local and national exhibitions.

In your second year, support is provided with portfolio preparation for higher education interviews. This course supports students who wish to continue onto any creative based courses in higher education, apprenticeships or employment.

COURSE STRUCTURE & ASSESSMENT

Throughout the two year course the emphasis is on learning about new materials and exploring techniques.

In Year 12, you will undertake a series of investigations in the form of two projects. Themes are open ended to allow students to develop their own creative pathways. In the second year, students are expected to work much more independently and work may well be based on experiences and interests developed in the first year of the course. You will be required to produce an extended unit of study, accompanied by a written essay to support their practical investigations. Coursework is worth 60% of the overall grade and the examination is worth 40%.

Throughout the course students will be continually assessed through various forms. Students will have a 10-hour internal examination in Year 12 and an external 15-hour examination at the end of the course.



BIOLOGY

WHY STUDY THIS COURSE?

Biology is the study of living things and helps us to make sense of the world around us. It helps us to answer questions like “Why are plants green?” and “How does my heart beat constantly?” as well as “How closely related are human beings to dinosaurs?”

COURSE DETAILS

Qualification: A' level Biology
Awarding Body: AQA

Entry Requirements: 5
GCSE grades 4-9
including
English Language, Maths
grade 6, plus GCSE
Biology grade 6
OR Science Trilogy 6,6

Biology has strong links with Chemistry and Geology and can open up many pathways into careers in health and clinical professions, such as medicine, dentistry, veterinary science, physiotherapy, pharmacy, optometry or nursing.

COURSE STRUCTURE & ASSESSMENT

Year 1 Topics

- Biological molecules
- Structure and function of DNA, RNA
- Cells and the immune system
- How organisms exchange substances within the environment
- Genes and how they code for the production of protein

Year 2 Topics

- Photosynthesis and respiration
- Organisms in the environment
- Genetics and populations
- Control of gene expression

Students will also participate in the field course to Ty'n-y-Felin. The course runs for two years with three exams at the end of the second year. The first two exams carry a weighting of 35% each and the final exam carries a weighting of 30%. All exams are 2 hours long. There will also be on-going teacher assessment of practical skills in order for students to pass the practical endorsement.



BUSINESS STUDIES

WHY STUDY THIS COURSE?

A' level Business Studies provides students with the opportunities to develop important skills and relevant tools that equip them with the knowledge to set up their own business, move into employment or progress onto university. A' level Business Studies is relevant to the world around us and provides you with an understanding of what makes a successful business and why some businesses fail. Business Studies is a relevant course which will help you to make the most of your future career.

COURSE DETAILS

Qualification: A' level

Business Studies

Awarding Body: Edexcel

Entry Requirements: 5

GCSE grades 4-9 including both English Language and Maths plus a grade 5 in Business Studies if studied at GCSE level

Theme 1: Marketing and People

Students will develop an understanding of:

- meeting customer needs
- the market
- marketing mix and strategy
- managing people
- entrepreneurs and leaders.

Theme 2: Managing Business Activities

Students will develop an understanding of:

- raising finance
- financial planning
- managing finance
- resource management
- external influences.

Theme 3: Business Decisions and Strategy

This theme develops the concepts introduced in Theme 2. Students will develop an understanding of:

- business objectives and strategy
- business growth
- decision-making techniques
- influences on business decisions
- assessing competitiveness
- managing change.

Theme 4: Global Business

This theme develops the concepts introduced in Theme 1. Students will develop an understanding of:

- globalisation
- global markets and business expansion
- global marketing
- global industries and companies (multinational corporations).

COURSE STRUCTURE & ASSESSMENT

Paper 1 - Marketing, people & global businesses (2 hours, 100 marks), draws on topics from theme 1 and 4.

Paper 2 Business activities, decisions and strategy (2 hours, 100 marks), draws on topics from theme 2 and 3.

Paper 3 Investigating business in a competitive environment (2 hours, 100 marks), will assess content across all four themes.

Questions will be drawn from local, national and global contexts. For Paper 3, there will be a pre-released context document. The context will focus on a broad issue, such as an industry or market in which businesses operate. The question paper will be in two sections. The first section will focus on the broad context provided. The second section will focus on at least one strand within the context provided, such as a particular business. Each section will contain unseen stimulus materials comprising quantitative and qualitative evidence. Students cannot take any of their research or investigation data carried out as part of the pre-release into the examination.

BTEC BUSINESS STUDIES

WHY STUDY THIS COURSE?

We are delighted to continue to offer a BTEC Business qualification this year. BTECs embody a fundamentally learner-centred approach to the curriculum, with a flexible, unit-based structure and knowledge applied in project-based assessments.

COURSE DETAILS

Qualification: BTEC National Extended Certificate in Business (equivalent to 1 A' level)

Awarding Body: Pearson

Entry Requirements: 5 GCSE grades 4-9 including both English Language and Maths.

These assessments focus on the holistic development of the practical, interpersonal and thinking skills required to be able to succeed in employment and higher education.

COURSE STRUCTURE & ASSESSMENT

The National Extended Certificate in Business equivalent in size to one A' level. 4 units of which 3 are mandatory and 2 are external.

The styles of external assessment used for qualifications in the BTEC Business are: Examinations – all learners take the same assessment at the same time, with a written outcome.

Set tasks – learners take the assessment during a defined window and demonstrate understanding through completion of a vocational task.

Exploring Business - Learners study the purposes of different businesses, their structure, the effect of the external environment, and how they need to be dynamic and innovative to survive. A business is any activity that provides goods or services, whether that is to make a profit or not. By developing relevant business knowledge and understanding, this unit will help you to progress to employment, vocational training and higher apprenticeships, or higher education.

Developing a Marketing Campaign - Learners will complete activities which consolidate knowledge, understanding and skills to enable them to interpret information and data to formulate a rationale and a plan for a marketing campaign. They will need to draw on business concepts and the wider business environment to formulate responses to the activities in the externally-set task. Learners complete the task using knowledge and understanding from their studies of the sector and apply both transferable and specialist knowledge and skills.

Personal and Business Finance - Learners study the purpose and importance of personal and business finance. They will develop the skills and knowledge needed to understand, analyse and prepare financial information. This unit includes aspects of both personal and business finance. Personal finance involves the understanding of why money is important and how managing your money can help prevent future financial difficulties. It is vital you understand the financial decisions you will need to take throughout your life and how risk can affect you and your choices. This unit will also give you an insight into where you can get financial advice and support.

Recruitment and Selection Process - You will study how excellent customer service contributes to business success, and develop your customer service skills. In this unit you will learn that attracting new customers costs a business more than keeping customers, so it is important to keep customers happy. When working in a customer service role you need to understand the procedures to follow when dealing with customer requests and complaints. This unit will help you develop communication and interpersonal skills when dealing with customers, and to understand the importance of having good relationships with customers through identifying and confirming the customer's needs. You will examine how businesses monitor and evaluate their level of customer service provision through obtaining feedback and see how this helps inform improvements to the level of service provided.

The unit will enable you to evaluate your own customer service skills and to create a development plan for improvement. The unit also supports further training, study or employment in a business environment.

CHEMISTRY

WHY STUDY THIS COURSE?

Chemistry is the study of matter and energy and the interaction between them. There are many reasons to study Chemistry, even if you aren't pursuing a career in science. Chemistry is everywhere in the world around you! It's in the food you eat, clothes you wear, water you drink, medicines, air, cleaners - you name it.

COURSE DETAILS

Qualification: A' level Chemistry

Awarding Body: AQA

Entry Requirements: 5

GCSE grades 4-9 including

English Language. Maths

grade 6 plus GCSE

Chemistry grade 6

OR Science Trilogy 6,6

Chemistry sometimes is called the "central science" because it connects other sciences to each other, such as Biology, Physics, Geology and Environmental Science. Chemistry is a well respected A' level that can open up many pathways for the future from medicine, to patent law, forensic science or farming.

COURSE STRUCTURE & ASSESSMENT

There are three exams at the end of the two years for A' level, all of which are two hours long. At least 15% of the marks for A' level Chemistry are based on what you learn in your practicals.

- Paper 1: Physical and Inorganic Chemistry
- Paper 2: Physical and Organic Chemistry
- Paper 3: Applied and Practical Chemistry

Physical Chemistry includes work on: atomic structure, amount of substance, bonding, energetics, thermodynamics, kinetics, chemical equilibrium and acid base chemistry.

Inorganic Chemistry includes work on: redox, periodicity, Group 2 the alkaline earth metals, Group 7(17) the halogens, electrode potentials and electrochemical cells, period 3 elements and their oxides, and properties and reactions of transition metals.

Organic Chemistry includes work on: alkanes, halogenoalkanes, alkenes, alcohols, organic analysis, optical isomerism, aldehydes and ketones, carboxylic acids and derivatives, aromatic chemistry, amines, polymers, amino acids, proteins and DNA, organic synthesis, NMR spectroscopy and chromatography.

“ I've been at Lymm since starting high school in Year 7. I chose to continue my studies into sixth form here as I feel comfortable within the school community and confident in the teachers. You get so much support from the teachers and sixth form staff - they're always willing to help.

I really enjoy Organic Chemistry and the practical sessions. I intend to study medicine at university and

have found the introduction to biochemistry invaluable.

Whilst studying for my A' levels I was lucky enough to have the opportunity to visit Wythenshawe Hospital. I was given a tour around the breast cancer centre which gave me an insight into the hospital environment and this confirmed my desire to study medicine.



ELLEN THOMAS

DANCE

WHY STUDY THIS COURSE?

Are you passionate about dance? Do you love performing, choreographing or watching and analysing dance? If the answer is yes, then this course is for you.

COURSE DETAILS

Qualification: A' level Dance

Awarding Body: AQA

Entry Requirements: 5 GCSE grades 4-9, including both English Language and Maths plus a passion for performance

In studying A' level Dance you will follow a course which, although involving a high content of dance performance within it, will also cover issues such as the cultural context of dance, fitness, dance as an art form, and choreography.

COURSE STRUCTURE & ASSESSMENT

The course includes:

- Solo choreography, performance of own choreography, performance within a quartet and group choreography.
- Training, technique, health and safety of the dancer.
- Analysis of choreography, the analytical study of one set work and its cultural and artistic context.
- Knowledge and understanding of a specific area of study related to the development of one of the following: modern dance, ballet, jazz dance, and performance skills related to one of the specific areas of study

Component 1 Performance and Choreography (Practical Exam 80 Marks 50% of A level).

What is assessed:

- Solo performance linked to a specified practitioner within an area of study. Performance in a quartet.
- Group choreography

Component 2: Critical Engagement

What is assessed:

- Knowledge and understanding and critical appreciation of two set works.

One compulsory set work within an area of study– Rooster (Christopher Bruce 1991) and Rambert Dance Company (1966-2002) One optional set work within the corresponding area of study: Sutra (Sidi Larbi Cherkaoui 2008) The independent contemporary dance scene in Britain (2000 – current)



ECONOMICS

WHY STUDY THIS COURSE?

Economics is a versatile subject and gives you a sophisticated understanding of our country and how the economy works. You will investigate microeconomic topics such as how individual decisions impact economic outcomes, the importance of competition, how markets operate and why they fail and how the distribution of income and wealth is affected. At the same time you will learn about macroeconomics, looking at the 'big picture' of how our national economy fits into the global context, the global impact of financial markets and monetary policy and the operation of the international economy.

COURSE DETAILS

Qualification: A' level Economics

Awarding Body: AQA

Entry Requirements: 5

GCSE grades 4-9, including English Language. Maths grade 6

You could work for a big corporation as an economic analyst, or be the next Evan Davies or Stephanie Flanders on the BBC. Banks need economists, as do local and national government, and economics is always valuable in careers like marketing, law, journalism or teaching.

Economics has become high profile. The credit crunch, bankers' bonuses and fears of a Euro meltdown are just three topics rarely out of the news in recent years, throwing a light on the importance of and divisions within the discipline. You will apply economic theory to support analysis of current economic problems and issues, and you will be able to appreciate the interrelationships between microeconomics and macroeconomics.

COURSE STRUCTURE & ASSESSMENT

Paper 1: Markets and market failure: students answer two questions: Section A – students choose one context from a choice of two; Section B – students choose one context from a choice of three.

Paper 2: National and international economy: students answer two questions: Section A – students choose one context from a choice of two; Section B – students choose one context from a choice of three.

Paper 3: Economic principles and issues: Section A – multiple choice; Section B – extended writing questions. The examinations will all be taken at the end of the two-year course and will consist of three 2 hour papers including a combination of data response and essay questions. Each examination will carry an equal weighting in terms of their contribution to the overall grade. The first two papers will cover the micro and macroeconomics, whilst the third paper will examine broader economic principles, issues and themes.



ENGLISH LANGUAGE

WHY STUDY THIS COURSE?

You will be an ideal candidate for this course if you wonder about the origins and patterns of the language we use every day! You will possess good written skills with the ability to write fluently. You will also have an enthusiasm for exploring language, for writing discursively and for increasing your knowledge of linguistics.

COURSE DETAILS

Qualification: A' level English Language

Awarding Body: AQA

Entry Requirements: 5 GCSE grades 4-9, including Maths. English Language and Literature grade 5+

If you are interested in language and how it is used by different groups (for example: social, occupational, and gender) and how this can affect language choices, then this is the course for you. Additionally, the course delves into the study of how children acquire language and the different theories associated with learning to speak, read and write.

COURSE STRUCTURE & ASSESSMENT

Paper 1: Language, the individual and society

- Textual variations and representations
- Children's language development (0-11 yrs)
- Methods of language analysis

Assessment - Written examination: 2 hours 30 minutes, 100 marks, 40% of A' level

Paper 2: Language Diversity and Change

- Language diversity and change
- Language discourses
- Writing skills
- Methods of language analysis

Assessment - Written examination: 2 hours 30 minutes, 100 marks, 40% of A' level

Non-exam assessment: Language in action

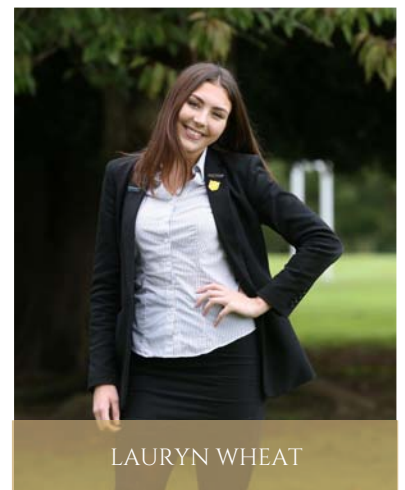
- Language investigation (2000 words, excluding data)
- A piece of original writing and commentary (1500 words in total)

Assessment - Word count: 3500, 100 marks, 20% of A' level. Assessed by teachers then moderated by AQA.

“ English Language has had a huge impact on me analytically. It has allowed me to interpret why we use such a complex language and it has helped me to develop an infatuation with the necessities and impurities within it.

Lymm has not only improved my academic skills, but has given me opportunities that will benefit my future self - allowing me to take on roles that wouldn't be granted at any other college.

The staff at Lymm are one in a million; they work tirelessly to guarantee that we, as students, get the best out of our limited time here. The support you receive, not only within lessons, but also with the application process to universities or apprenticeships, is so valuable. The level of independence given to you as a young adult, whilst knowing that there is always someone there to talk to if I ever needed help, is what makes Lymm so great!



LAURYN WHEAT

ENGLISH LITERATURE

WHY STUDY THIS COURSE?

You will be an ideal English Literature student if you possess a keen interest in the study of literature, love discussion and have the ability to write fluently. You should enjoy reading for pleasure and exploring prose, poetry and drama in real depth. This is a dynamic and exciting course, and one which is an extremely popular A' level choice. We place a high value on students being autonomous readers and learners.

COURSE DETAILS

Qualification: A' level English Literature

Awarding Body: AQA

Entry Requirements: 5 GCSE grades 4-9, including Maths, English Language and Literature grade 5+

There are two main components to English Literature. The first is 'Love through the Ages', where students study a range of texts across different time periods, including a Shakespeare play, an anthology of poetry and classic novels. Although not an exhaustive list, aspects of love that are explored include romantic love of many kinds, loss, social conventions and taboos, young love, maturing love, jealousy and guilt, truth and deception, proximity and distance, and approval and disapproval. Running parallel to this is 'World War One and its Aftermath' where we look at the following issues through key texts: imperialism and nationalism, recruitment and propaganda, life on the front line, responses on the home front, pacifism, generals and soldiers, slaughter, heroism, peace and memorials, the political and social aftermath, different and changing attitudes to the conflict, the impact on combatants, non-combatants and subsequent generations as well as its social, political, personal and literary legacies.

COURSE STRUCTURE & ASSESSMENT

Paper 1: Love through the Ages - A study of three texts: poetry, prose and a Shakespeare play.

- **Assessment** - Written examination: 3 hours, 75 marks, 40% of A' level

Paper 2: Texts in shared contexts - Option 2A: World War 1 and its aftermath.
A study of three texts: one prose, one poetry and one drama.

- **Assessment** - Written examination: 2 hours 30 minutes, Open book, 75 marks, 40% of A' level
- **Critical Study** - Comparative critical study of two texts, at least one of which must have been v

“ I chose to come to Lymm High Sixth Form because the teaching staff are very knowledgeable in their chosen fields. Without their support, I do not think I would have achieved the grades I did at GCSE.

The thing I have enjoyed most during my English Literature A' level has been learning about the historical context around each of the texts we have studied.

I would advise anyone that is considering coming to study at Lymm to take responsibility for their learning, try to always get ahead and don't be scared to ask for help.



”

BTEC FASHION

WHY STUDY THIS COURSE?

Candidates choosing the National Diploma have the opportunity to follow an exciting two year fashion course that integrates both practical, critical and theoretical study. You will be given the opportunity to work with a wide variety of fashion techniques and extend your fashion skills at all levels. Learners will become more confident and independent in their practice and develop both their fashion drawing and construction skills.

COURSE DETAILS

Qualification: National Diploma in Fashion Design and Production (equivalent to two A' levels.)

Awarding Body: Edexcel

Entry Requirements: 5 GCSE grades 4-9, including both English Language and Maths, plus GCSE grade 5 (or equivalent) in Textiles, Art, Photography or DT related subject
9 units of which 8 are mandatory and 2 are external.

The qualification is designed to give learners a technical understanding of Fashion Design and Production. Students will gain knowledge and skills in design, pattern cutting, manufacturing methods and promotion to produce fashion projects and outcomes. Students will also be provided with opportunities to visit galleries and museums, attend fashion shows, work with visiting artists/designers, exhibit their own collection in local, national and our own fashion show.

In your second year support is provided with portfolio preparation for higher education interviews. This course supports students who wish to continue onto any fashion based courses in higher education, apprenticeships and employment.

COURSE STRUCTURE & ASSESSMENT

Throughout the two year course the emphasis is on learning about fashion designing and exploring new construction method techniques.

You will have nine units to complete, eight of which are assessed internally and two that are assessed externally. Each unit will have a specific project brief in which you must work towards achieving a Pass, Merit or Distinction.



GEOGRAPHY

WHY STUDY THIS COURSE?

You will find Geography is a unique, exciting and valuable subject. So many of the world's current problems, conflicts and natural disasters such as hurricanes, earthquakes and tsunamis or the spread of disease, are just some of the great challenges that face us and need the geographers of the future to help us understand.

COURSE DETAILS

Qualification: A' level
Geography

Awarding Body: AQA

Entry Requirements: 5
GCSE grades 4-9, including
both English Language
and Maths, plus a minimum
of Grade 5 in GCSE
Geography

You will be able to get involved and study a rewarding and relevant subject which allows you to develop a wide range of skills from collecting data in the field to understanding the attitudes and values of decision makers. You will take part in a variety of river, coastal and urban-based fieldwork, which is a fantastic chance to see geography come to life and gain hands-on experience seeing real-life case studies. You can choose to conduct fieldwork from any aspect of the Geography course that you find interesting. Beyond A' level and careers, geographers are highly sought after by employers and contribute substantially to the applied management of resources and environments. There is a wide variety of career options and management positions, as well as entry to law, architecture, civil engineering, medicine, dentistry and veterinary science. In addition, there are many new career opportunities linked with sustainability, climate change, disaster, risk management and carbon neutral economies.

COURSE STRUCTURE & ASSESSMENT

Component 1: Physical Geography

- Section A: Water and carbon cycles
- Section B: Coastal systems and landscapes
- Section C: Hazards

Assessment - Written examination: 2 hours 30 minutes, 96 marks, 40% of A' level

Component 2: Human Geography

- Section A: Global systems and global governance
- Section B: Changing Places
- Section C: Contemporary Urban Environments

Assessment - Written examination: 2 hours 30 minutes, 96 marks, 40% of A' level

Component 3: Geographical Investigation

- Students complete an individual investigation which must include data collected in the field

Assessment - 3,000/4,000 words, 35 marks, 20% of A' level



The A' level Geography course at Lymm looks at how the world is changing and how people are changing with it. I have enjoyed learning about urban environments, and how they provide equally attractive prospects to all parts of a population.

Lymm Sixth Form is a great environment to study in, both in and out of lessons.

Staff are always willing to help any students progress, whether it be in what they are already learning or extra material outside of the syllabus.

The sense of community here is fantastic. Because of the follow on from lower school, those who are new to sixth form quickly become known by all students and are welcomed into the family.



LUKE TURNER

BTEC HEALTH & SOCIAL CARE

WHY STUDY THIS COURSE?

The BTEC National in Health and Social Care uses a combination of assessment styles to give students confidence that they can apply their knowledge to succeed in the workplace and also have the study skills to continue learning on higher education courses.

COURSE DETAILS

Qualification: BTEC Level 3 Extended Certificate in Health and Social Care (equivalent to 1 A' level)

Awarding Body: Pearson Edexcel

Entry Requirements: 5 GCSE grades 4-9, including both English Language and Maths

This range of vocational assessments (both practical and written) mean students can showcase their learning and achievements to best effect when they take their next step, whether that's supporting applications to higher education courses or potential employers.

COURSE STRUCTURE & ASSESSMENT

The Extended Certificate is comprised of four units.
The three mandatory units are:

Unit 1: Human Lifespan Development (focuses on the different life stages and how humans develop physically, intellectually, emotionally and socially as they age).

Unit 2: Working in Health and Social Care (focuses on how service users in a variety of Health and Social Care settings must be treated equally)

Unit 5: Meeting Individual Care and Support Needs (focuses on professional development and understanding of health or social care provision)

Plus one optional unit.

Unit 10: Sociological perspectives (focuses on how sociological factors affect human development and behaviour)

Units 1 and 2 are assessed through external examinations; unit 1 in Year 12 and unit 2 in Year 13. Units 5 and 10 are assessed internally. Units are assessed using a grading scale of Distinction *, Distinction, Merit, Pass and Unclassified. All mandatory and optional units contribute proportionately to the overall qualification grade, for example a unit of 120 GLH will contribute double that of a 60 GLH unit.

The two exams you will be sitting make up 60% of your overall BTEC grade.

The BTEC specification has introduced a range of assessment methods for students. Externally assessed units will take the form of a 1.5 hour examination or set task which the learner will be required to complete in a given window of time. Internally assessed units will require students to conduct their own research and carry out projects either as an individual or as a group to demonstrate practical and technical skills. At the end of each project students will receive written feedback and suggestions for how to improve their work in the next assignment. Each unit within the qualification has specified assessment and grading criteria which are to be used for grading purposes. A summative unit grade can be awarded at Pass, Merit or Distinction.

HISTORY

WHY STUDY THIS COURSE?

Apart from being extremely enjoyable and enabling students to learn about the past – that is, to understand the past and, through it, come to a far better understanding of the present.

COURSE DETAILS

Qualification: A level History

Awarding Body: Edexcel

Entry Requirements: 5

GCSE grades 4-9, including both English language and maths, plus a minimum of 5 in GCSE History

History offers students the opportunity to acquire and improve on many of the key skills which have been identified as a priority for higher education.

COURSE STRUCTURE & ASSESSMENT

In the first year, students will study 'In Search of the American Dream: the USA, 1917-96.' This topic is a breadth study of American History and will encompass topics such as America during the First World War and the economic boom, as well as the development of the Civil Rights Movement and different leadership challenges and styles of the different presidents.

Students will also study 'India, 1914-48: the Road to Independence.' This unit comprises a study in depth of the transitions of the Indian sub-continent from a colony to independence

In the second year, students will study Poverty, Public Health and the State 1780-1939. The breadth and depth topics explore the ways in which the British state gradually, and not always successfully, became involved in taking on responsibility for people's health and welfare.

Students will also complete a historical study on the Arab-Israeli conflict.



BTEC HOSPITALITY

WHY STUDY THIS COURSE?

The BTEC is made up of a variety of units designed to give students an insight into the hospitality industry and potential career opportunities to suit the most ambitious students. These include events management, which could lead to becoming a wedding planner or festival planner, hotel management, dietician, marketing, restaurateur working on cruise ships, receptionist, chef, waiter/ waitress, food advisor for TV and films, food taster for new food products, sommelier (wine waiter) and many more.

COURSE DETAILS

Qualification: BTEC Level 3 Subsidiary Diploma in Hospitality (equivalent to 1 A' level)

Awarding Body: Edexcel

Entry Requirements: 5 GCSE grades 4-9, including both English Language and Maths, plus GCSE grade 5 in Catering or Food Technology

Every country in the world has a hospitality industry and the skills students learn are readily transferable, meaning that a career in hospitality can lead to discovering new countries, new cultures and new people. As well as being a people orientated industry, hospitality is creative - a product is created whether it's food, drink, or an experience.

This course includes:

- Work experience in local restaurants
- Visits to local hospitality outlets
- Planning and running events in our very own Chapters restaurant
- Gaining experience in customer service which can be applied to any chosen career

Learners can go on to university to study hospitality related courses or could enter into employment in hospitality related industries.

COURSE STRUCTURE & ASSESSMENT

During the two year course, students will learn how to plan and organise events for staff, students and parents. This will involve designing menus, trialling recipes, designing and decorating the venue, costing the event, presenting dishes and food and drink service.

The course is made up of a variety of practical and theoretical units which are continually assessed and learners will receive feedback on their progress throughout the course as they provide evidence towards the grading criteria.

Evidence for assessment may be generated through a range of activities including realistic practical experience in Chapters restaurant, written work and oral assessment.



BTEC IT

WHY STUDY THIS COURSE?

The course is designed for learners who are interested in an introduction to the study of creating IT systems to manage and share information alongside other fields of study, with a view to progressing to a wide range of higher education courses, not necessarily in IT.

COURSE DETAILS

Qualification: BTEC National Extended Certificate in IT (equivalent to 1 A' level)
Awarding Body: Edexcel
Awarding Body: 5 GCSE grades 4-9 including both English Language and Maths plus previous ICT experience at Level 2 or GCSE

Learners will develop a common core of IT knowledge and study areas, such as: the relationship between hardware and software that form an IT system; managing and processing data to support business; and using IT to communicate and share information. This qualification carries UCAS points and is recognised by higher education providers as meeting admission requirements to many relevant courses. The content is equivalent in size to one A' Level.

COURSE STRUCTURE & ASSESSMENT

In Year 12 pupils will be expected to undertake one exam and one coursework unit:

Exam component - Information Technology Systems. This is a two-hour exam and is worth 90 marks. The exam will assess students' understanding of computer systems and the implications of their use in personal and professional situations.

Pupils will also cover a coursework unit: **Using Social Media in Business.** In this unit pupils will:

- Explore the impact of social media on the ways in which businesses promote their products and services
- Develop a plan to use social media in a business to meet requirements
- Implement the use of social media in a business.

In Year 13 pupils will be expected to undertake one exam and one coursework unit:

Creating Systems to Manage Information: students are set a supervised task, where they are required to design, create, test and evaluate a relational database system. (Controlled Assessment)

Web Design (Coursework) pupils will learn:

- Understand the principles of website development
- Design a website to meet client requirements
- Develop a website to meet client requirements.



MATHEMATICS

WHY STUDY THIS COURSE?

Mathematics is a fascinating subject that provides a gateway to much of the world around us and the future of mankind. The knowledge gained by A' level provides the building blocks for science, technology and finance.

COURSE DETAILS

Qualification: A' level
Mathematics

Awarding Body: OCR MEI
Entry Requirements: 5
GCSE grades 4-9, including
English Language. Maths
grade 7

Mathematics is one of the main facilitating subjects for study at university and is highly regarded for entry into medicine, dentistry, engineering, law and economics. As well as the benefits to further study, it is recognised that taking STEM subjects at A' level provides greater career opportunities, as well as leading to jobs with higher salaries.

COURSE STRUCTURE & ASSESSMENT

Students will continue to study the algebra and number topics from GCSE as well as some geometry. All students will also study mechanics and statistics topics, including hypothesis testing, kinematics and Newton's laws of motion amongst others.

All students will sit three examinations at the end of Year 13: Pure Mathematics and comprehension, Pure Mathematics & Mechanics and Pure Mathematics & Statistics.



FURTHER MATHS

WHY STUDY THIS COURSE?

The Further Mathematics course is a challenging and rewarding course for those students who excel in Mathematics.

COURSE DETAILS

Qualification: A' level Further Mathematics

Awarding Body: OCR MEI

Entry Requirements: 5 GCSE grades 4-9, including both English Language. GCSE Maths Grade 8 or above

The course allows students to explore sophisticated concepts and approaches that pave the way for a smooth transition into degree Mathematics.

Students wishing to take Mathematics, Engineering, Computing, Sciences, Finance or Economics at degree level would benefit enormously from taking this course.

COURSE STRUCTURE & ASSESSMENT

Further Maths does not always mean harder Maths. Because it counts as two A' levels, students will generally do a broader range of topics. Students will cover topics including Complex Numbers, Matrices, Differential Equations and Polar Coordinates as well as studying Mechanics and Statistics in more detail.

All students will sit four examinations at the end of the second year: Core Pure, Mechanics, Statistics, Extra-Pure.

“Further Maths covers a range of mathematical topics including geometry, algebra and calculus. I enjoy the satisfaction of completing complicated maths problems and, studying Further Maths at A' level has helped to develop my skills of problem solving and critical thinking.

I attended lower school from Year 7 to 11 so continuing my education at Lymm felt like a natural thing to do.

There is a vibrant atmosphere here where teachers and staff take care of students. Choose something you enjoy and that interests you, research the subjects that you would like to study as this will potentially lead you into a career that you love. I am now studying Law at Cambridge University.



WILLIAM CATLOW

MEDIA STUDIES

WHY STUDY THIS COURSE?

The media play a central role in contemporary culture, society and politics. They shape our perceptions of the world through the representations, ideas and points of view they offer. A' level Media Studies offers learners the opportunity to develop a thorough and in depth understanding and critical exploration of these key issues.

COURSE DETAILS

Qualification: A' level
Media Studies

Awarding Body: WJEC

Entry Requirements: 5
GCSE grades 9-4, including
English Language grade
4, Maths grade 4

The study of a wide range of rich and stimulating media products is central to the specification, offering opportunities for detailed analysis of how the media communicate meanings in a variety of forms. Learners will work from the product outwards to debate key critical questions related to the social, cultural, political and economic role of the media. Through studying media products, learners will engage with the dynamic relationships between media products, media industries and audiences. Learners will also consider established media forms alongside more contemporary forms, developing an awareness of emerging and evolving media. This specification aims to develop knowledge and understanding of the transnational nature of the media, considering the effect of different national contexts on representations in media products, the global reach of media industries, and the targeting of audiences on a national and global scale.

COURSE STRUCTURE & ASSESSMENT

Students will sit two exams at the end of Year 13 (2hrs 15minutes and 2hrs and 30 minutes) totalling 70% of the qualification analysing media language, representations, media industries and audiences.

Students will also produce an individual cross-media production based on two forms applying knowledge and understanding of the theoretical framework and digital convergence which is worth 30% of the qualification.

MODERN FOREIGN LANGUAGES

WHY STUDY THIS COURSE?

We are fortunate to offer three languages at A' level (French, German, Spanish). The following information is generic for all three languages. The A' level course represents a very advanced level of linguistic proficiency. Students will be able to gain confidence and fluently discuss topical and sophisticated aspects of life.

COURSE DETAILS

Qualification: A level
French/German/ Spanish

Awarding Body: AQA
(French/Spanish) Eduqas
(Geman)

Entry Requirements: 5
GCSE grades 4-9, including
both English Language
and Maths, plus GCSE
grade 5+ in the chosen
language is also required.
Students should have sat
the higher tier paper at
GCSE.

UK industry really needs people with excellent language skills. Universities recognise languages as challenging, academic A' levels.

Languages are excellent subjects to combine with others at university (eg Chemistry & German). They provide future opportunities to live and work abroad and learn about another country's history, culture and way of life. You will express your opinions on contemporary themes such as immigration and youth culture.

COURSE STRUCTURE & ASSESSMENT

Topical issues including: the changing nature of families, the digital world, immigration/integration, racism and the political life of young people. Cultural themes including: festivals, traditions, art, architecture, music, fashion and cinema.

In addition to their classes, students will also benefit from weekly sessions with a native speaker to focus solely on their speaking skills and develop confidence to converse fluently and spontaneously in their language of study.

Literary texts & films such as: La Haine, L'Étranger, Sophie Scholl, Der Vorleser, La casa de Bernarda Alba. Research project: Similar to EPQ, students will research a cultural aspect which interests them and present/discuss this as part of the speaking exam.

Core skills: Throughout both years of study there will be an emphasis on the core skills of grammar and translation, fluency, listening and reading comprehension, and producing high-quality written/spoken language.

- Paper 1: Reading/Listening/Translation, 2.5 hours: 100 marks (50%)
- Paper 2: Writing, 2 hours: 80 marks (20%)
- Paper 3: Speaking, 21-23 minutes: 60 marks (30%)

MUSIC

WHY STUDY THIS COURSE?

This course is of particular interest to practical musicians who have enjoyed GCSE Music and who are seeking to develop their skills further. The course will introduce students to a range of composers and musical genres and will allow students to develop key study skills such as analysing and research as well as aural, theory and practical musicianship skills.

COURSE DETAILS

Qualification: A' level Music

Awarding Body: Edexcel

Entry Requirements: 5 GCSE grades 4-9, including both English Language and Maths. GCSE Music Grade 5 plus students should be studying for their Grade 5 theory exam

The course is suitable for those students who are considering applying for any arts related courses at university or college. Recent students have made successful applications to music colleges and musical technology courses as well as performing arts courses.

COURSE STRUCTURE & ASSESSMENT

There are three components to the course: you will have the opportunity to perform in a style of your choice and develop your composition skills, in addition to developing your analysis and score-reading skills by studying a range of set pieces.

Component 1: Performing (30% of the qualification) 60 Marks

In this unit you will be assessed on the following:

- A public performance of one or more pieces, performed as a recital
- This performance can be playing or singing solo, in an ensemble, improvising, or realising music using music technology
- The total performance time across all pieces must be a minimum of 8 minutes

Component 2: Composing (30% of the qualification) 60 Marks

In this unit you will be assessed on the following:

- Total of two compositions, one to a brief set by the exam board and the other a free composition
- One composition must be either a list of briefs related to the areas of study, or a free composition, carrying 40 marks for this component. This composition must be at least 4 minutes in duration
- One composition must be from a list of briefs assessing compositional techniques, carrying 20 marks for this composition

Component 3: Appraising (40% of the qualification) 100 marks

In this unit you will develop your knowledge and understanding of musical elements, contexts and language and apply this knowledge through the context of six areas of study, each with three set works. The areas of study are; Vocal Music, Instrumental Music, Music for Film, Popular Music and Jazz, Fusions, New Directions

The assessment comprises: One written paper of 2 hours.

- Section A: Areas of study and dictation (50 marks)
- Section B: Extended responses – two essay questions

MUSIC TECHNOLOGY

WHY STUDY THIS COURSE?

If you are interested in any aspect of music and/or technology then this is the course for you. We study everything from the 'first note' to the final CD.

COURSE DETAILS

Qualification: A' level

Music Technology

Awarding Body: Edexcel

Entry Requirements: 5

GCSE grades 4-9 including both English Language and Maths, plus an ability to play a keyboard and have a keen interest in music technology

We get to arrange and remix music in contemporary styles; multi-track record using various techniques; explore popular styles of music and how they have evolved; explore sound sources and synthesis, whilst also developing knowledge of acoustics and waveform. The list goes on... It is a course of developing musical knowledge whilst also using up to date technology to realise musical possibilities.

COURSE STRUCTURE & ASSESSMENT

Component 1: Recording (20% of the qualification) 60 marks. In this unit you will learn about the production tools and techniques to capture, edit, process and mix an audio recording.

Component 2: Technology - based composition (20% of the qualification) 60 Marks.

In this unit you will learn how to create, edit, manipulate and structure sounds to produce a technology- based composition.

Component 3: Listening and analysing (25% of the qualification). Written examination 1hour 30 mins 75 marks.

In this unit you will gain knowledge and understanding of recording and production techniques and principles, in the context of a series of unfamiliar commercial recordings. You will apply your knowledge to three areas of study:

- Recording and production techniques for corrective and creative purposes.
- Principles of sound and audio technology
- The development of recording and production technology

Component 4: Producing and analysing (35% of the qualification)

Written/practical exam. In this unit you will use knowledge and understanding of editing, mixing and production techniques which will be applied to unfamiliar materials provided by the exam board. There are two key areas of study:

- Recording and production techniques for both corrective and creative purposes
- Principles of sound and audio technology.

“ I love the creativity and freedom that music technology offers, I find it really interesting how people put different songs together and the methods they use to compose music. It has opened the door into an industry I never knew existed and has really inspired me to go for what I enjoy doing. Smaller class sizes are really useful as I get the help I need, especially with getting to grips with Year 12 subjects. It's such a big leap that you need that extra support.

”



OLIVER SKETT

PE

WHY STUDY THIS COURSE?

A-level Physical Education allows students to play to their strengths and gain dynamic theoretical and practical skills for further education or work.

COURSE DETAILS

Qualification: A' level
Physical Education

Awarding Body: AQA

Entry Requirements: 5
GCSE grades 4-9, including
both English Language
and Maths plus GCSE PE
Grade 5. Students must
have achieved a grade 5 in
the theory element of the
GCSE course

COURSE STRUCTURE & ASSESSMENT

- Applied anatomy and physiology
- Skill acquisition
- Sport and society
- Exercise physiology
- Biomechanical movement
- Sport psychology
- Sport and society and role of technology in physical activity and sport

Students are assessed externally with two written exams. Each exam is 2 hours and 105 marks. Each paper is worth 35% of the overall grade.

Students are assessed in practical performance in one selected sport. This can be either as a performer or coach. 45 marks and 15% of the overall grade.

Students are also required to analyse and evaluate, using appropriate theoretical content included in the specification, a performance as either player/performer or coach, in one activity from the specification. Students can analyse and evaluate their own performance or the performer of another, as long as it is in an activity from the specification. 45 marks and 15% of the overall grade.



PHILOSOPHY, ETHICS & RELIGION

WHY STUDY THIS COURSE?

The course gives students the opportunity to develop their philosophical and ethical thinking skills and put very famous arguments to the test. It is an excellent preparation for university, as we encourage learning through discussion, engagement with famous primary texts and independent research.

COURSE DETAILS

Qualification: A' level
Religious Studies

Awarding Body: Edexcel

Entry Requirements: 5
GCSE grades 4-9, including
both English Language
and Maths plus GCSE
Grade 5 in a Humanities
subject

You don't have to be religious to study this course and you don't have to have studied it at GCSE. You just have to be interested in the most important questions that humans can ask and you must be prepared to think logically and critically about the way that you argue.

COURSE STRUCTURE & ASSESSMENT

Students will study the following:

Paper 1: Philosophy of Religion

- The Design Argument
- The Cosmological Argument
- The Ontological Argument
- Problems of evil and suffering, different types of problems and solutions
- Religious Experience
- Religious Language
- Influences of developments in life after death
- Scholars linked to psychological and sociological views

Paper 2: Religion and Ethics

- Utilitarianism
- Situation ethics
- Natural Moral Law
- Issues of war and peace
- Sexual ethics
- Ethical language
- Deontology, virtue ethics
- Medical Ethics – with a focus on beginning and end of life

Paper 4 (4B) Christianity

- Religious belief and values – including the nature of God
- The Trinity and Nature of the Church
- Sources of wisdom
- Practices – expressions of religious identity
- Social and historical developments – secularisation, liberation and feminist theology
- Work of scholars
- Religion and society
- Study of primary texts relating to significance for believers

Students will complete all external assessments at the end of the second year. The examination within RS consists of three externally examined papers. Each Paper will be a written exam lasting 2 hours, worth 33.33% of the total grade with 80 marks available per paper.

- Section A – Two short structured questions
- Section B – Two extended response questions on an unseen passage
- Section C – An extended essay question

PHYSICS

WHY STUDY THIS COURSE?

Physics is a challenging and engaging subject. It develops the fun, analytical and thinking skills that will be necessary in all walks of life. Physics is one of the most highly regarded courses that can be studied at A' level and as such is an excellent addition to your academic profile.

COURSE DETAILS

Qualification: A' level Physics

Awarding Body: OCR

Entry Requirements: 5

GCSE grades 4-9, including English Language. Maths grade 6, plus GCSE Physics grade 6 OR Science Trilogy 6,6

Our students who have studied Physics have found this a superb stepping stone to studying a diverse range of subjects at university including Natural Sciences at Cambridge, Geophysics, Medicine or Engineering.

COURSE STRUCTURE & ASSESSMENT

Throughout the two years at A' level, students will gain the necessary practical skills to complete the course as well as study a range of topics including: motion, forces in action, work and energy, electrical circuits, waves, simple harmonic motion, quantum physics, Newton's laws and momentum, circular motion and oscillations, thermal physics, electric and magnetic fields, nuclear physics, medical imaging and modelling the universe.

There is a large mathematical content to the course and at every stage mathematics is used to describe the nature of the physical world. Equations are used throughout the course to represent the relationships between different phenomena as we build up an understanding of cause and effect within the universe. The ability to use and manipulate these equations becomes a fundamental skill which is continually developed.



PHOTOGRAPHY

WHY STUDY THIS COURSE?

Candidates choosing A' level Photography have the opportunity to follow an exciting two year course that integrates both practical, critical and theoretical study. You will be given the chance to work with a wide variety of camera processes including digital and traditional darkroom techniques.

COURSE DETAILS

Qualification: A' level
Photography

Awarding Body: AQA

Entry Requirements:
5 GCSE grades 4-9, including both English Language and Maths, plus GCSE grade 5 (or equivalent) in an Art related course

The course is designed to build on and extend skills, enabling learners to become more confident and independent in their practice. Students will enjoy opportunities to build on knowledge, skills and understanding of media and processes gained through gallery and museum visits, visiting photographers' workshops, location and studio photo shoot opportunities and have access to exhibit work in both local and national exhibitions.

In your second year support is provided with portfolio preparation for higher education interviews. This course supports students who wish to continue onto any media and photographic based courses in higher education, apprenticeships and employment.

COURSE STRUCTURE & ASSESSMENT

Throughout the two year course the emphasis is on learning about new photographic methods and exploring techniques. In Year 12 you will undertake a series of investigations in the form of two projects. Themes are open ended to allow students to develop their own creative pathways.

In the second year, students are expected to work much more independently and work may well be based on experiences and interests developed in the first year of the course. You will be required to produce an extended unit of study, accompanied by a written essay to support your practical investigations. Coursework is worth 60% of the overall grade and the examination is worth 40%.

Throughout the course students will be continually assessed through various forms. Students will have a 10 hour internal examination in Year 12 and an external 15 hour examination at the end of the course.



3D DESIGN

WHY STUDY THIS COURSE?

This dynamic course has been developed to allow students to actively experience a comprehensive range of three dimensional art and design processes and contexts. If you like drawing, sketching and computer design this is for you. Get ready to manufacture your inventions in wood, plastic, metal and other materials

COURSE DETAILS

Qualification: Art and Design (Three-dimensional design) 7205

Awarding Body: AQA

Entry Requirements: 5

GCSE grades 4-9 including both English Language and Maths plus a grade 5+ in DT and/or Art.

Studying Three-Dimensional Design builds and stretches your practical and theoretical skillset and allows you to work in very different ways compared to traditional subjects. The skills you develop are transferable and the independence and resilience you build will enhance all areas of your learning, all of which is highly sought after by future employers. It is worth noting that the creative industries are the fastest growing economic sector in the UK.

Three-Dimensional Design offers a wide array of career potential. You may be contemplating a career in architecture, product design or graphics, this course is an excellent basis for further/higher education courses, leading to a wide variety of careers in the Design sector. You will also earn UCAS points that contribute to university admission requirements

During the course you will build up a range of graphic illustration skills to be able to create your own designs as 3D models. These will range from pencil and rendered sketches through to using sophisticated software packages such as SketchUp, Photoshop, 2D Design and Fusion 360.

You will be trained to use tools and machinery from simple hand tools to the use of the laser cutter and 3D printer. During the course you will have the freedom to choose your major design project which could be architectural or a product of your choosing.

COURSE STRUCTURE & ASSESSMENT

Component 1 - (Personal Investigation) – Coursework. Weighting: 60% Duration: Year 13

Component 2 - (External Unit) – Externally Set Assignment. Weighting: 40% Duration: 15 hour exam

Component 1 comprises internally set workshops and assignments. Component 2 is an externally set project, culminating in a 15 hour examination. Both components are internally assessed by your teachers and moderated by the exam board.

PSYCHOLOGY

WHY STUDY THIS COURSE?

A' level Psychology provides students with a sound understanding of the various methods and approaches used in psychology. It is designed to develop students' critical thinking skills and will prepare them for higher level study. We aim to develop students' ability to interpret, evaluate and comment.

COURSE DETAILS

Qualification: A' level Psychology

Awarding Body: AQA

Entry Requirements: 5 GCSE grades 4-9, including English Language grade 4, Maths grade 5 and minimum 4,4 in GCSE Science

Students are encouraged to develop an in-depth knowledge of core topics. This specification also allows them to demonstrate the ability to use scientific methodology in the context of psychology. There is no requirement for prior knowledge of psychology when embarking on this course, however if you have studied GCSE Psychology, this would be an advantage. The eclectic mix of topics allows students to have a good all round knowledge of psychology that is fundamental to understanding human behaviour. It will also equip students with other necessary skills such as analysis and evaluation and learning how to carry out their own piece of research.

COURSE STRUCTURE & ASSESSMENT

The two year A' level course provides an introduction to a range of topics including:

- social influence
- memory
- attachment
- psychopathology
- research methods
- approaches in psychology
- biopsychology
- issues and debates
- gender
- schizophrenia
- forensic psychology.

Students will sit three, two hour exams at the end of the two years, each worth 96 marks. These comprise of multiple choice questions as well as short answer questions and extended writing tasks. Question papers will assess students' ability to apply their knowledge rather than just the ability to learn material.

“A' Level Psychology traditionally involves the study of the human mind. We look at how different perspectives view the human mind and effects on our behaviour. Other topics we look at are how our mind can process and develop memories, how people can be so easily led to do things they'd never think of doing and treatments for severe mental disorders including depression and schizophrenia.

At university I plan to study Forensic Psychology. Studying at Lymm has really prepared me for this as the mixture of taught lessons and independent study sessions build your responsibility for your own learning. We had a criminal psychologist visit sixth form to talk to us about his average day at work. This was really insightful, particularly for me because it is the career I wish to pursue.



SOCIOLOGY

WHY STUDY THIS COURSE?

Advanced level Sociology offers students the opportunity to develop the essential knowledge and understanding of central aspects of sociological thought and methods.

COURSE DETAILS

Qualification: A' level

Sociology

Awarding Body: AQA

Entry Requirements: 5

GCSE grades 4-9,
including both
English Language
and Maths

It is designed to encourage students to demonstrate the application of a range of skills and consider the integration of sociological themes:

- Socialisation, culture and identity
- Social differentiation, power and stratification.

The two year A' level course provides an introduction to a range of areas of sociological interest, examining the role of institutions in society, inequality, discrimination and power relationships. Students will learn how to conduct sociological research, using a variety of methods such as interviews and questionnaires. The course also offers an insight into many current social issues, giving you the chance to explore the contributions of sociology to the real world, in fields such as criminology and education. During the first year students will focus specifically on the family, education and research methods. Further to this, during the second year, students will focus specifically on the mass media and crime and deviance. Theory and methods will be considered throughout the course.

COURSE STRUCTURE & ASSESSMENT

The Advanced level course will sit three examinations at the end of the second year. Each paper is 2 hours in length and worth 80 marks.

BTEC SPORT

WHY STUDY THIS COURSE?

The BTEC Sport course is ideal for students with a passion for sport. As a vocational course, students will largely be assessed via ongoing assignments, which is often attractive to students whom do not want to pursue examination based A' Level courses.

COURSE DETAILS

Qualification: BTEC National Extended Diploma in Sport (equivalent of 3 A' Levels)

Awarding Body: Edexcel

Entry Requirements: 5

GCSE grades 4-9, including both English Language and Maths

It is essential for our students to gain various additional qualifications that make them appealing to both employers and universities. These qualifications include National Lifeguarding Certificate and Level 2 Community Sports Leaders Award. Embedded within the course are many opportunities to work with our sports partners and this often leads to students gaining employment as sports coaches, leisure attendants and gym instructors within the local area. In addition, the ethos of BTEC courses provides experiences that promote maturity in participants which directly enhances their employability. The majority of our learners go on to study sports related degree courses at university as the content of this qualification has been developed in consultation with academics to support this progression to higher education. Employers and professional bodies have also been involved and consulted to confirm that the content is appropriate and consistent with current practice for learners who may choose to enter employment directly in the sport sector. Progression routes include employment or further training in the following fields:

- Sport and Exercise Science
- Sport, Leisure and Business Management
- Business Management
- Sports Marketing
- Fitness Training
- Outdoor Education
- Sports Coaching and Leadership
- Teacher Training
- Event Management
- Sports Development

COURSE STRUCTURE & ASSESSMENT

This course will involve the study of 14 different units including topics such as anatomy and physiology, sports psychology, fitness testing, sports events organisation and sports leadership. The course will involve 10 internally assessed units and 4 external assessments. These will take the form of an examination and written tasks which will be assessed externally.

THEATRE STUDIES

WHY STUDY THIS COURSE?

This is an exciting and diverse course where students will gain an introduction to several key theatre practitioners and will apply their developing appreciation for drama and theatre through practical exploration and written reflections.

COURSE DETAILS

Qualification: A' level

Drama and Theatre studies

Awarding Body: Edexcel

Entry Requirements: 5 GCSE grade 4-9, including both English Language and Maths, plus an interest in performance

This course helps students to develop a range of key skills, including their ability to communicate verbally and kinetically, analyse language and semiotics, evaluate in detail, research effectively and independently, work co-operatively and supportively and use the creative process to explore written texts.

COURSE STRUCTURE & ASSESSMENT

Component 1: Devising (40% of the qualification) 80 Marks. In this unit you will devise an original performance piece based on one key extract from a performance text and a theatre practitioner as stimuli. There are two parts to the assessment:

- A portfolio (60 marks)
- The devised performance or design realisation (20 marks)

Component 2: Text in Performance (20% of the qualification) 60 Marks. In this unit you will be assessed on the following:

- A group performance or design realisation of one key aspect from a performance text (36 marks)
- A monologue/duologue performance or design realisation of one key extract from a different performance text (24 marks)

Component 3: Theatre Makers in Practice (40% of the qualification) Written Examination; 2 hours 30 minutes, 80 marks. In this unit you will prepare for the examination on the following:

- Live theatre evaluation of a play attended during the course.
- Practical exploration and study of two performance texts focusing on how these can be realised in performance. One of these set texts will be studied in light of a theatre practitioner and the focus will be on how this can be re-imagined for a contemporary audience
- Section A: Live Theatre Evaluation (20 marks)
- Section B: Page to Stage: Realising a Performance Text (36 marks)
- Section C: Interpreting a Performance Text (24 marks)



ADMISSIONS

Thank you for taking the time to read the information in our prospectus. If you are interested in studying at Lymm High Sixth Form, then please follow these simple steps:



1. Visit us on our Open Evening on Thursday 14th November 2019, 5-8pm. Tour the facilities, meet the staff and find out what Lymm Sixth Form has to offer



2. Complete an application form which can be found on our website and return it to Sixth Form Student Services. External students are welcome to post this or email it to sixthform@lymmhigh.org.uk. Your application should be returned by Friday 20th December 2019.



3. All students who apply to us will be invited for interview in January 2020; you will receive an invitation with your individual appointment time.



4. After interview you will be offered a conditional place, providing you meet our entrance requirements. This will be confirmed to you in writing.



5. On GCSE Results Day you will then enrol onto your chosen courses. We prefer you to attend in person on the day as, if your results are not as expected, we can then discuss this with you and make any necessary amendments. Therefore, we respectfully request any holidays are arranged with this in mind.

CONTACT US

Lymm High School Sixth Form
Oughtrington Lane
Lymm
Cheshire WA13 0RB
T 01925 755458
E sixthform@lymmhigh.org.uk

Follow us on Social
[Facebook@LymmHighSchool](https://www.facebook.com/LymmHighSchool)
[Twitter@LymmHighSchool](https://twitter.com/LymmHighSchool)
[Instagram@Lymm6thForm](https://www.instagram.com/Lymm6thForm)

Visit our website for more information
www.lymmhigh.org.uk/sixth-form





LYMM

SIXTH FORM

Lymm High School Sixth Form
Oughtrington Lane, Lymm, Cheshire, WA13 0RB
Tel: 01925755458 Email: sixthform@lymmhigh.org.uk

Visit our website for more information
www.lymmhigh.org.uk/sixth-form