

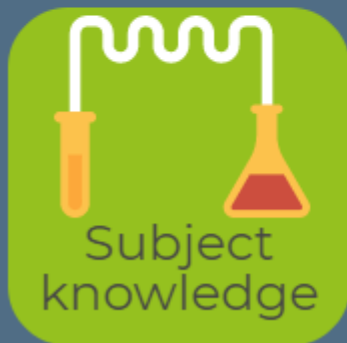


Introduction to Higher Education

Live, Study, Work, Apply



What do you gain from Higher Education?





Choosing the right course for you

5

choices on your

UCAS application form



Choosing the right course for you



Subject(s) that
interest you



Thorough research



A certain career



Fieldwork, study abroad,
work experience



Coursework, exams,
practical assessments



Types of courses available

Degree

- BA/BSc/BEng/LLB (Hons)
- Typically 3 or 4 years
- Integrated Masters
- Single or Combined Honours
- Overseas Study/ Placement Year

Foundation Year

- Progress on to link degree course
- 1 year
- Art Foundation

Top Up Degree

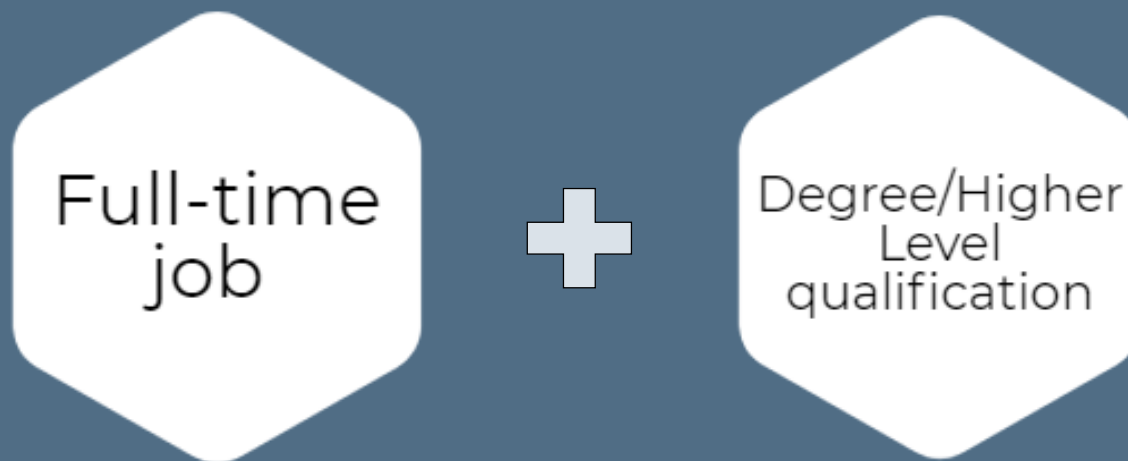
- Top up from HND/HNC in certain subjects e.g. Accounting/Business
- 1 or 2 years

Degree Apprenticeship

- Full-time job
- Degree qualification



What is a Degree or Higher Apprenticeship?



- Collaborative Course – individually created by employers and universities
- Certain subject areas
- A chance to gain a full honours degree
- A full time job, no tuition fees and minimum salary for £12,000



Placement Year

Links with
major
employers

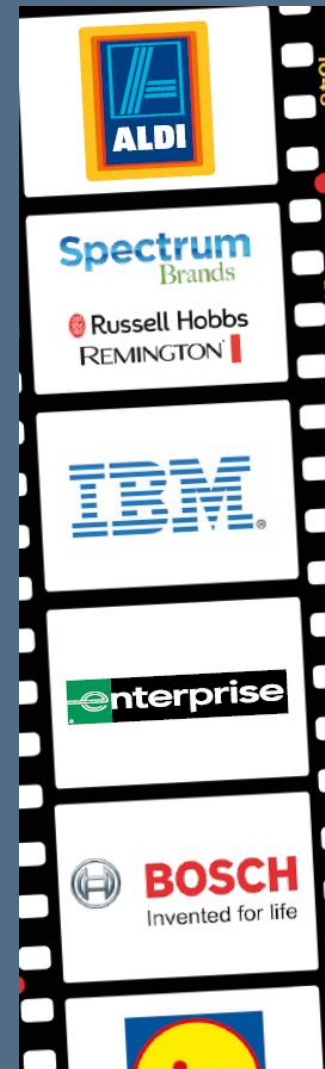
Foot in the
door for
after
graduation

Better
performance
in final year

A salary for
one year of
your
academic
life

Support
with
finding
placements

Business/
industry
experience





Study Abroad

Sending students to our overseas partner universities

Hosting inbound students at Manchester Met



Exchange agreements with over 150 universities in the world

Majority of courses offer study abroad options



Canada
USA
Argentina
Europe
China
Japan
Hong Kong
Malaysia
Australia



Choosing the right university for you





Choosing a University: campus based or city based?

Campus

- Live in an all-student campus
 - Easy to make friends
 - Safe environment
- Convenient – no need to travel
- Extremely close to facilities, e.g. library, gym, university bar/club
- Everything is on campus – sometimes giving little reason to venture out?



City

- Unlimited options for socialising, transport links, shopping
- Easily access a wide range of nightlife, music, arts, sports, restaurants
- Some universities have buildings scattered across the city
- Lively atmosphere; the opportunity to explore





University Support Services

IT Services

Disability
Support

Financial
Support

Student
Hub

Counselling

Careers &
Employability



Entry requirements

Level 2:
GCSE or
equivalent

Level 3:
A Level/
BTEC/
Access



Interview
Portfolio
Audition
Work Experience
Personal Statement
Tests
Recent Study





Desirables for your personal statement

Specific work
experience

Volunteering/
Charity work

College
ambassador

Duke of Edinburgh,
National
Citizenship Service

Part-time Job or
previous
employment

Travel/Year
abroad

Outside
interests,
hobbies and
commitments

University
summer schools,
taster days



Student Finance

Tuition fees:

- Full-time Undergraduate degree and Foundation Year courses maximum £9,250
- Tuition Fee Loan available (non-income assessed)

Living costs:

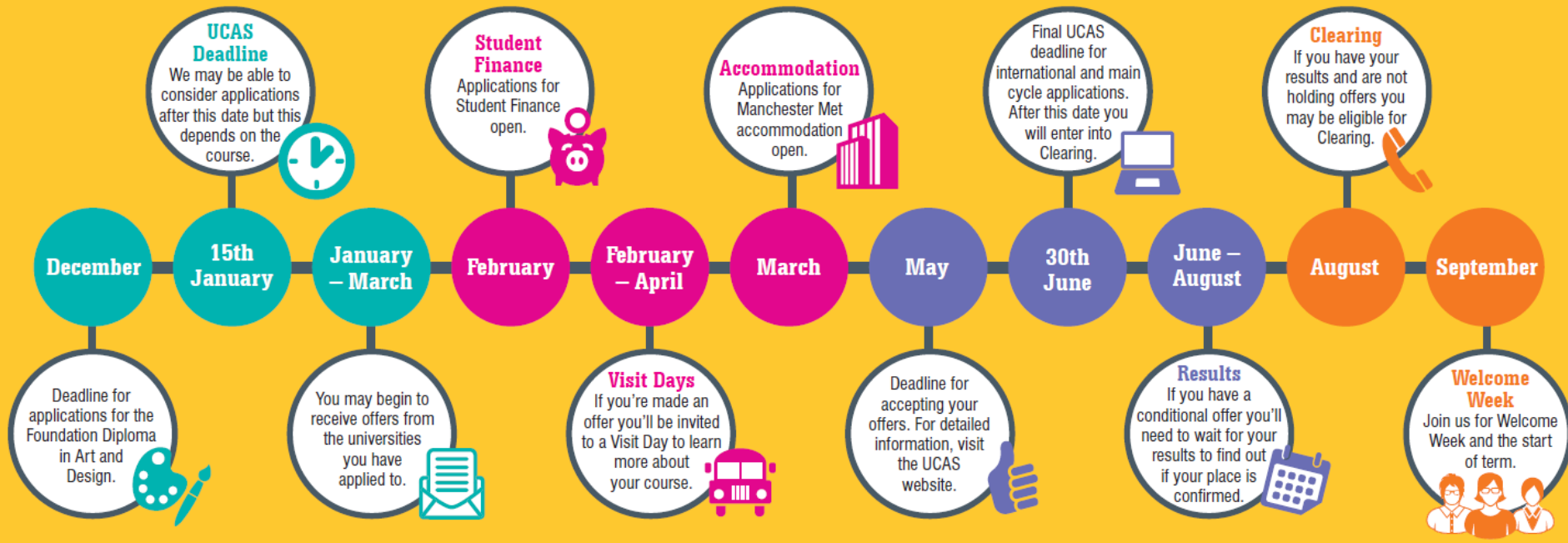
- Accommodation, food, social, travel etc.
On average £7,500 - £8,500 (living away from home)
£3,000- £3,500 (living at home)
- Maintenance Loan available (income assessed)

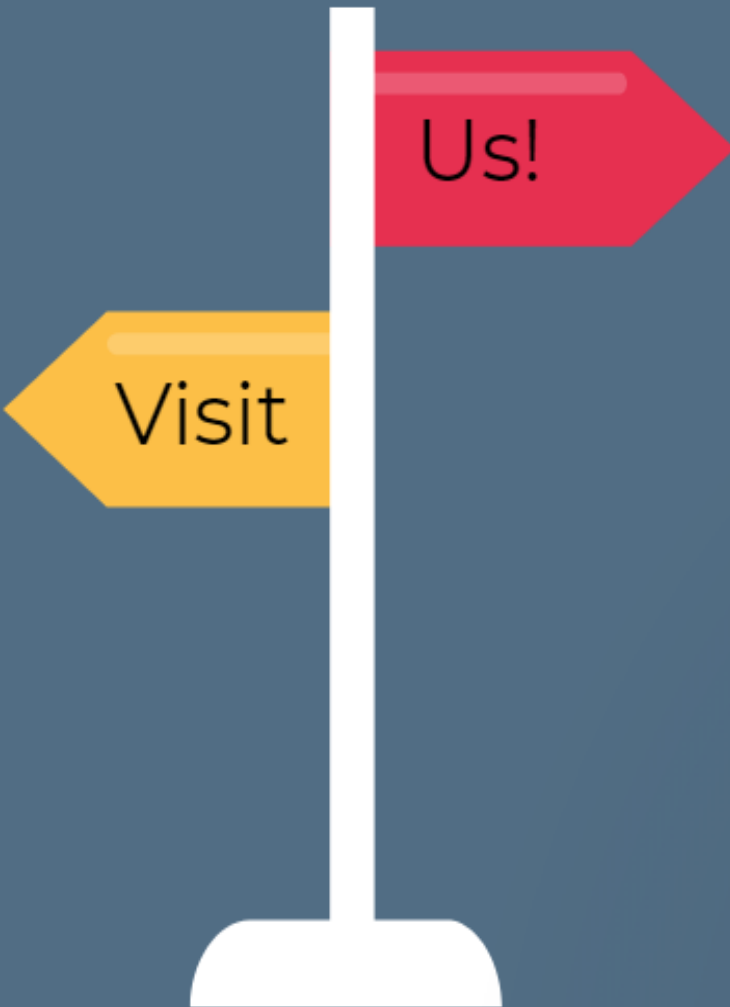
Bursaries and Scholarships:

- Many universities and colleges offer financial support to their students through bursaries and scholarships
- Free money!



Next Steps



A large yellow circle centered on a grey background with a yellow hexagonal pattern. The text inside the circle is in bold black font.

OPEN DAY
WED 17 JUNE 2020
10AM-4PM

