



LYMM
HIGH SCHOOL

**Welcome to the Year 8
Information & Guidance
Evening
23rd September 2021**



LYMM
HIGH SCHOOL

The Team

Mrs R Morris
Head of Year 8

Mrs T Williams
Pastoral Lead



Upgrading school facilities is key to maximising your child's school experience

PUTTING THE 'FUN' IN FUNDRAISING



- Sportsman's Dinner
- Lymm Ladies Lunch
- Annual Ball
- Bavarian Bierkeller night
- Easter orienteering
- Teacher quiz
- Christmas Winter Wander

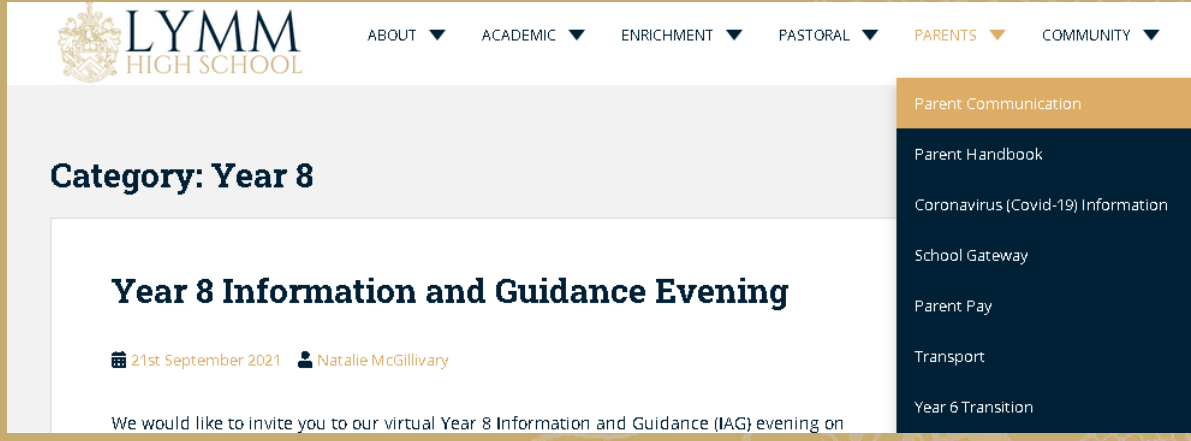
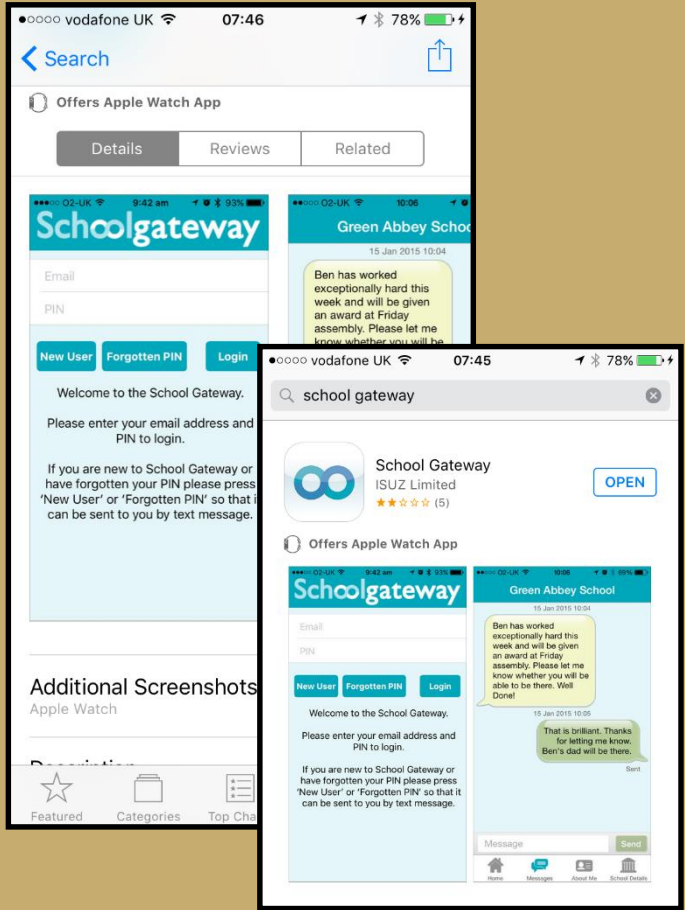
How you can help:

- Join the PTA!
- School lottery
- Easyfundraising
- Development fund

Email: PTA@Lymmhigh.org.uk

COMMUNICATION

School Gateway App



Y8 Parent Communication on the School Website

School Newsletter



Support: Who do I contact?

- Form Tutor
- Subject Teachers
- Student Services
- Head of Year
- SENCo – send@lymmhigh.org.uk





LYMM
HIGH SCHOOL

ATTENDANCE

- Target 100%
- Minimum expectation : 96%
- All absences below 96% will trigger intervention
- If your child is ill please call or use the school gateway to report their absence by 8.25am
- The contact for attendance in the first instance is Mrs Grimshaw in student services
kgrimshaw@lymmhigh.org.uk



LYMM
HIGH SCHOOL

ATTENDANCE

Attendance does matter....

There are only 39 teaching weeks in the school year. Attending school 90% of the time means missing over half a day of school per week. Over one year this equals to 3 weeks and 4 days of school and if the pattern continues throughout years 7-11, very nearly half a year of schooling would be lost!

Missing 6 days a half term every year is the same as missing just short of one whole school year



LYMM
HIGH SCHOOL

COMMUNICATION

Parental Information Evenings
throughout the year:

- Drugs
- Mental Health
- Sexual Harassment
- E - Safety





LYMM
HIGH SCHOOL

PUNCTUALITY

- Students should arrive at school by 8.20am as morning registration begins at 8.25am
- First bell goes at 8:15 to allow students into the building.
- Students late to form will be issued with a standards detention.
- Late buses are taken into consideration.





LYMM
HIGH SCHOOL

ILLNESS IN SCHOOL

- If your child feels ill during the day it is important that they report to Student Services – We need to know they are unwell and contact home if needed
- A school First Aider will decide the course of action
- **Please do not ask your child to phone home, they must go to student services, school will then contact you**
- It is important that we can get hold of you, please send any updated contact details in to student services





LYMM
HIGH SCHOOL

POSITIVE LEARNING ENVIRONMENT

- High standards
- Clear expectation of all pupils
- Mutual respect & responsibilities
- Behaviour for Learning (BFL) - rewards
- Disruption free lessons
- Celebration of achievement at all levels





LYMM
HIGH SCHOOL

Rewards – Hall Points

- Introducing Steps to Success this week.

Achievement/Hall points...

At Lymm High - 'Points mean Prizes'

Interhall competitions have started

Hall points awarded for participation in extra-curricular

WEEK 8 **£25 Amazon Voucher!**
(Raffle - 5 Winners - 1 per year! Top 20% for Hall Points per year entered)

WEEK 7 **Selection Boxes!**
(Raffle - 5 Winners per year! Top 50 for Hall Points in each year entered)

WEEK 6 **Trafford Centre Shopping Trip!**
Trafford Centre
(Raffle - 20 Winners per year - Must have at least 60 Hall Points to be entered)

WEEK 5 **Free Lunch!**
(Raffle - 4 Winners per year! Top 30% for Hall Points in each year entered)

WEEK 4 **Krispy Kreme!**
(Form Group with the most Hall Points this term!)

WEEK 3 **Halloween Treat Buckets!**
(Raffle - 5 Winners - 1 per year! Top 50 for Hall Points in each year entered)

WEEK 2 **Nando's Vouchers!**
(Raffle - 5 Winners - 1 per year! Top 40 for Hall Points in each year entered)

WEEK 1 **Queue Jump Passes!**
(Raffle - 10 Winners per year! Top 50 for Hall Points in each year entered)

**HALL POINTS
STEPS TO SUCCESS!**



LYMM
HIGH SCHOOL

ENRICHMENT





LYMM
HIGH SCHOOL

Leadership Ladder

Reflecting the aims and goals of Lymm High School for the academic year: developing social responsibility, leadership and providing cultural experiences to broaden your horizons.



- Will be launched shortly as a new digital platform.
- Students will be able to upload evidence to reach targets.
- Opportunity to earn hall points.
- Opportunity to get involved with the wider ethos of the school.
- Developing awareness of social responsibility.



LYMM
HIGH SCHOOL

Leadership Ladder



Contribution to School Life

☆☆☆☆☆☆☆☆



Experience

☆☆☆☆☆☆☆☆



Knowledge

☆☆☆☆☆☆☆☆



Leadership

☆☆☆☆☆



Social Responsibility

☆☆☆☆☆☆☆☆





Leadership Ladder



- Attend an extra-curricular activity/club for at least half a term
- Be a member of an inter-hall team
- Help out at an after-school or evening event
- Perform or assist in a school concert/performance
- Receive an award at a celebration assembly
- Receive at least three praise postcards
- Show visitors around school
- Take part in/contribute to an assembly

File Edit View Insert Format Tools Table

↶ ↷ Paragraph ▼ **B** *I* ▼ ☰ ☰ ☰ ☰ ☰ ☰ ☰ ☰

Please provide evidence



KNOWLEDGE ORGANISERS

Knowledge Organiser - The Norman Conquest

Who were the claimants to the English throne?

Edward the Confessor died on 5 January 1066. He had no children. Three men wanted to be king of England. Each man thought he had the best claim to the throne. The next king of England would have to win it in a war. The main three contenders to the throne were:

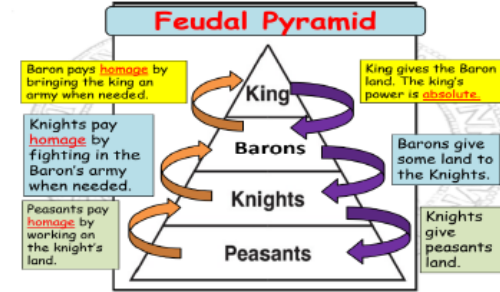
William, Duke of Normandy. The Norman chroniclers reported that Edward had promised his distant relative, William, the throne in 1051. William was the only blood relative of Edward, but the English throne was not hereditary anyway. Claims that Edward promised the throne were probably made up by the rival sides after the event. The Bayeux Tapestry, which was made after the Conquest, shows Godwinson swearing an oath of support to William in a visit to Normandy in 1064. William was supported by the Pope.

Harold Godwinson, Earl of Wessex. Harold Godwinson was a powerful and rich English nobleman. According to the Anglo-Saxon Chronicle, Edward named Godwinson as his successor on his deathbed. The next day, the royal council, known as the Witan, met and declared Godwinson king. An English king was proclaimed by the Witan - this gives Harold Godwinson the only claim to the throne by right.

Harald Hardrada, King of Norway. Harald was a Viking warrior. Hardrada based his claim on the fact that his ancestor, King Cnut, had once ruled England (1016-1035). He was helped by Godwinson's brother, Tostig.

Battle of Stamford Bridge: The first to try and seize the crown and invade England was Harald Hardrada of Norway. He was helped by Harold's brother Tostig, who was exiled from England. Harald Hardrada and Tostig landed with a massive army of over 8,000 Norwegians in the North of England. They took York and declared Harald Hardrada King of England. On hearing of the Viking (Norse) invasion, Harold Godwinson quickly gathered what men he could and marched 187 miles north to face him. They marched 37 - 45 miles a day, going as fast as they could and carrying their heavy kit with them. The two armies met at Stamford Bridge, just outside York, on 25 September 1066. It was a bloody battle and one in which Harold's army (the Saxons) broke through the Viking invasion.

The Battle of Stamford Bridge was one of the most impressive victories any Saxon King ever won. The victory of Harold Godwinson at Stamford Bridge on 25 September 1066 was one of the four of the three hundred ships, that came to England carry the 8,000 soldiers, returned to Norway. King Harold Godwinson marched to the south coast of England to stop them!



Key vocabulary	Definition
1 E-safety	Internet safety or online safety is trying to be safe on the internet
2 Cyber bullying	Is the use of electronic communication to bully a person, typically by sending messages of an intimidating or threatening nature.
3 Animated banner	Banner that moves between text and pictures.
4 Social networking	Social networking is the use of internet-based social media programs to make connections with friends, family, and other people.
5 Annotate	Label the diagram or print screens saying what each part is and why you have chose that design.
6 Visualisation diagram	Diagram/plan of the product you are designing.
7 Biased	Holding an opinion that often unfairly supports one argument, eg a football fan thinking that a referee's decision is biased.
8 Mobile applications	Applications designed to run on mobile devices. These can be used for creating documents, taking pictures, playing games, etc.
9 Unauthorised access	Using a computer system without permission.
10 File	An object on a computer that stores data, information, settings, or commands used with a computer program.
11 Folder	A way to organise computer files. A folder is a storage space that many files can be placed into to group them.
12 Email	Electronic mail - a method of exchanging messages between people using electronic and email addresses.
13 Security	Protecting yourself when using something that could be harmful or dangerous to you.
14 Report	A written account or an alert of an event or situation that can be used to seek help.
15 Child line	A 24 hour counselling service for children and young people where they can get help and advice on a range of issues.
16 CEOP	Child exploitation and online protection centre.
17 Downloading	Transferring data from one device or network to another.
18 Internet	A communications system that connects computers and databases all around the world.

Cyber bullying means to try to hurt someone's feelings by using technology such as the internet, email, chatrooms and texting.

Dealing with cyber bullying:

- Don't give out personal information in chatrooms, social websites, blogs, etc.
- Don't tell anyone, even your best friends, your passwords. They might be your best friend now, but what if you have an argument. They might log into your account and post really mean things and make it look like it was you.
- Don't respond - If you receive any mean or threatening messages in the chatroom, text or email, don't ever respond. You might be tempted to delete the message but don't. Save it and show an adult - you might need the message to use as evidence.

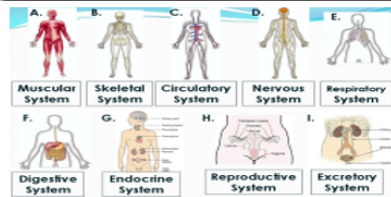


- E-safety Rules**
- Never give out your password - this doesn't matter who asks
 - Don't give out your contact details
 - Don't download any software without permission
 - Respect people's privacy
 - Copying and pasting could be breaking the copyright law - make sure you always reference where you got that information from!

Chatrooms: The main reason that your parents and teachers worry about you is that you might be talking to strangers.

5 Functions of the Skeletal System

1. Framework gives **shape & support** to the body.
2. Bones **protect** the internal organs.
3. Major **muscles** of the body are attached to the bones for **movement**.
4. **Blood** cells are formed in **marrow** of some bones.
5. Skeleton is a place where **calcium** and **phosphorus** compounds are stored.



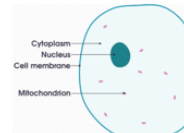
Muscles

Muscles are the **organs** that **move** body parts. Bones **protect** the internal organs.

Two Groups of Muscles

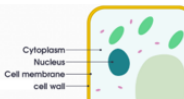
Y7 Bio T1- Living systems

Animal cell



Cell Part	Function
Nucleus	• Controls the cell • It contains DNA
Cytoplasm	• Where chemical reactions take place
Cell membrane	• Controls the passage of substances into and out of the cell
Mitochondrion	• Where energy is released by respiration

Plant cell



Drawing of the cell	Function	Specialised Features
	Transports oxygen around the body	-No nucleus so can carry more oxygen -A biconcave shape so is flexible to squeeze through small blood vessels
	Transmits nerve impulses	-Long and thin -Contains fibres which connect to other nerve cells -Surrounded by a cover which insulates it and speeds up transmission of nerve impulse
	Contracts (to provide muscle movement)	-Contain many mitochondria to provide energy for movement
	Fertilises the female egg	-Has a long tail to swim to the egg -The mid piece is packed with mitochondria to provide energy for movement. -Streamlined shape to help it swim -Head contains enzymes to break into the egg

Drawing of the cell	Function	Specialised Features
	Absorbs light for photosynthesis	-Packed with chloroplasts which contain the pigment chlorophyll. -Packed together to absorb as much light as possible
	Absorbs water and minerals from the soil	-Thin membrane -Large surface area which enables the cell to absorb more water from the soil
	Allows gases in and out of the leaf	-Able to change their shape -Found in pairs



LYMM
HIGH SCHOOL

KNOWLEDGE ORGANISERS

How can you support your child's learning?

- Self-quizzing: look, cover, write, check
- Quick quizzes on a single area of a topic
- Jumble the answers
- Blank out certain words/ sections/ columns

Try not to use them to merely highlight key information just copy from

Ensure that your child has their Knowledge Organisers from last Year to refer back to and consolidate learning.

5 Functions of the Skeletal System

1. Framework gives **shape & support** to the body.
2. Bones **protect** the **internal organs**.
3. Major **muscles** of the body are attached to the bones for **movement**.
4. **Blood cells** are formed in **marrow** of some bones.
5. Skeleton is a place where **calcium** and **phosphorus** compounds are **stored**.

Muscles
Muscles are the **organs** that **move** body parts. Bones **protect** the **internal organs**.

Two Groups of Muscles:

Y7 Bio T1- Living systems

Animal cell

Cell Part	Function
Nucleus	<ul style="list-style-type: none"> • Controls the cell • It contains DNA
Cytoplasm	<ul style="list-style-type: none"> • Where chemical reactions take place
Cell membrane	<ul style="list-style-type: none"> • Controls the passage of substances into and out of the cell
Mitochondrion	<ul style="list-style-type: none"> • Where energy is released by respiration

Plant cell

Drawing of the cell	Function	Specialised Features
	Transports oxygen around the body	<ul style="list-style-type: none"> -No nucleus so can carry more oxygen -A biconcave shape so is flexible to squeeze through small blood vessels
	Transmits nerve impulses	<ul style="list-style-type: none"> -Long and thin -Contains fibres which connect to other nerve cells -Surrounded by a cover which insulates it and speeds up transmission of nerve impulse
	Contracts (to provide muscle movement)	<ul style="list-style-type: none"> -Contain many mitochondria to provide energy for movement
	Fertilises the female egg	<ul style="list-style-type: none"> -Has a long tail to swim to the egg -The mid piece is packed with mitochondria to provide energy for movement -Streamlined shape to help it swim -Head contains enzymes to break into the egg

Drawing of the cell	Function	Specialised Features
	Absorbs light for photosynthesis	<ul style="list-style-type: none"> -Packed with chloroplasts which contain the pigment chlorophyll. -Packed together to absorb as much light as possible
	Absorbs water and minerals from the soil	<ul style="list-style-type: none"> -Thin membrane -Large surface area which enables the cell to absorb more water from the soil
	Allows gases in	<ul style="list-style-type: none"> -Able to change their shape -Found in pairs



LYMM
HIGH SCHOOL

EQUIPMENT

What does your child need to have in school with them?

- School bag
- Fully stocked pencil case
- Knowledge Organiser Folder with Knowledge Organisers from previous year and this year.
- Subject specific requirements are outlined in the Parent Handbook
- All uniform and equipment can be purchased from the school shop





LYMM
HIGH SCHOOL

Isolation and Quarantining Work

**Students will be given a
'window into the lesson'**

**Exceptions – IT / Technology
/ Art**

