



Lymm
High School

FOUNDED c.1592



Afritwin Quiz Night
Pg. 8

Sharing education
together.

Languages Week
Pg. 13

Students celebrate
European Day of
Languages

NEWSLETTER

OCTOBER 11TH 2017 · WWW.LYMMHIGH.ORG.UK

PITCH
IN! 
LYMM HIGH SCHOOL

LYMM HIGH SCHOOL CAMPAIGN FOR NEW 3G PITCH

“Pitch In!” urge Lymm High School Pupils launching new 3G pitch campaign.

Our scheme for a 3G pitch and floodlighting at Lymm High School, which would be used by all of our students and the wider community, has been launched this week and we need your help!

The state-of-the-art pitch, which allows sport to be played in all weather conditions on a surface that feels very much like real grass, would be a joint venture between Lymm High School and the Football Association,

Football Foundation and Cheshire FA.

We are looking to make an application to the Premier League/Football Association fund next year and are embarking on a major

CONTINUES ON PG. 3

CONTINUED...



This newsletter will be regularly updated with news of fundraising activities, but any support you can offer will be hugely appreciated. This might be in the form of donations, personal sponsorship, help running fundraising activities or providing us with contacts of individuals or business who might be able to help.

If you are able to help, please contact Tina McGuffie at tmcguffie@lymmhigh.org.uk



fundraising campaign. As a school, we are hoping local people will show their support for a community 3G football pitch by helping to raise at least £100,000 to help support the bid.

Obviously, this is a very ambitious target - but this is an ambitious project and we believe that our students deserve the very best.

As well as seeking support from local businesses and other sporting organisations, we are looking to enlist the help of parents and young people of the school and the local area.

Fundraising to improve the student changing facilities also took place last year, with generous donations made by many of you to the school development fund. We now intend to combine the funds raised for the two projects, ensuring that the changing room refurbishment meets the FA's regulations for changing

facilities – something that is necessary for a successful bid for the 3G pitch.

This is a fabulous opportunity for the school – and one that may not come around again for many years. Having such a facility on site would benefit every single student, being used for PE lessons in all year groups and a wide range of extra-

curricular sport. It will also be a fantastic asset for the whole community, who will be able to use it in the evenings and at weekends.

Sport is a key part of every

child's education and development and together we can make a truly deep and lasting impact on the school if successful with this bid. We're all very excited to see so much enthusiasm for the project so far and look forward to seeing the plans become a reality.

For more information or to donate, please visit www.lymmhigh.org.uk

'This is a fabulous opportunity for the school – and one that may not come around again for many years. '

NOTICES

TYNNY LOST PROPERTY

We have acquired a number of lost property items at the school from the recent Y7 residential visit to Ty'n – Y-Felin. These items have no names in them so cannot easily be returned to students and include pairs of walking boots, trainers and other various items of clothing.

If your son/daughter has lost anything since returning to school, please ask them to come to student services to check. Alternatively, you may also like to come in and check for your child's lost items, Student Services is open between 8.00am – 4.00pm daily.

To assist with the process of reuniting lost property with the correct student, please clearly mark on each item of school clothing the name of your child.

Unfortunately, we do not have room to store large amounts of lost property and therefore any items not claimed within 6 months will be disposed of.

DRIVING AND PARKING SAFETY

In the interests of good community relations, not to mention the safety of the students and yourselves, please try to park considerately when dropping off and picking up students.

INSET DAY

A polite reminder to parents: Lymm High School will be closed to students on Friday 13th October for INSET day.

NON UNIFORM DAY

To celebrate the launch of the 'Pitch In!' campaign to raise funds, we will be holding a non-uniform day on Thursday 12th October.

Students are encouraged to wear their own clothing and to make a voluntary donation of £1 towards the campaign on the day.

Please can we just remind everyone that non-uniform items should be appropriate for a school environment. If in doubt, please check in advance with a member of Student Services.

NOTICES

BAGS 2 SCHOOL

Over the next two weeks, Afritwin will be delivering Bags2Schools to each form. We ask that you to fill them with old and unwanted clothes, and return them to the Atrium on Thursday 2nd November. All proceeds go to Afritwin.

WINTER PLANT SALES

This autumn term, the Lymm High School PTA are hoping to raise funds by offering hanging baskets and Christmas wreathes for sale.

Hanging baskets will be available shortly after the half term and wreathes will be available from the week commencing 11 December, 2017.

To place an order, you can download a winter plant sale form [here](#)

SIXTH FORM NCS AUTUMN PROGRAMME

National Citizen Service (NCS) is a government-backed programme which is supported by Lymm Sixth Form. NCS helps young people build their confidence and gain new skills while having fun and giving back to their community – the best possible springboard for their future.

Whether they're about to start sixth form or college, or preparing to enter the working world, signing up to NCS is one of the best decisions a teenager can make.

To Find out about exciting opportunities taking part during the October half term, please click [here](#).

LHS YOUNG MUSICIAN OF THE YEAR

This year's Lymm High School Young Musician of the Year 2017 - 2018 competition is about to begin. Any students wishing to enter the competition can collect an application form from Mr Starkey or their peripatetic tutor. The deadline for applications is Thursday 12th October. Auditions begin Monday 16th October with the final being held on Tuesday 7th November. Good luck to all applicants



LYMM
HIGH SCHOOL

SIXTH FORM OPEN EVENING

Thursday 9th November 5pm - 8pm

Discover what a quality school sixth form
education can offer

33% of all A levels awarded this year were A*-A
grades

For further information visit:
www.lymmhigh6thform.org.uk





Les Misérables School Edition™

Performed entirely by students



28TH NOVEMBER | 29TH NOVEMBER | 30TH NOVEMBER | 1ST DECEMBER
7.00PM MAIN HALL

A musical by ALAIN BOUBLIL and CLAUDE-MICHEL SCHONBERG

Based on the novel by VICTOR HUGO

Music by CLAUDE-MICHEL SCHONBERG

Lyrics by HERBERT KRETZMER

Original French text by ALAN BOUBLIL and JEAN-MARC NATEL

Additional Material by JAMES FENTON

Orchestrations by JOHN CAMERON

Original London production by CAMERON MACKINTOSH and THE ROYAL
SHAKESPEARE COMPANY

School Edition specially adapted and licensed by MUSIC THEATRE INTERNATIONAL and CAMERON
MACKINTOSH (OVERSEAS) LTD



Artsmark
ARTS COUNCIL ENGLAND

TICKETS

Adults £8 | Concessions £5

LYMM HIGH SCHOOL

AFRITWIN QUIZ NIGHT



FRIDAY 3RD NOVEMBER 2017

TICKETS £7

BAR | RAFFLE | PRIZES

Come along to the lower hexagon, Lymm High School, for our fun filled quiz night.

All our proceeds go towards the Afritwin Project.

Lymm High School fundraise to help our twin school in South Africa. Since Afritwin's founding in 2004, we have: painted and decorated the classrooms of Qhasana High School, installed a modern computer suite, bought a variety of textbooks and stationery equipment for the students to use, provided scholarships for the students, and last year we introduced an allotment for the students of Qhasana to grow their own vegetables.

Check www.lymmhigh.org.uk/enrichment/afritwin/ for more details.

HAPPY BUT TIRED FROM THEIR RESIDENTIAL



Our Year 7 returned happy, exhausted but as new leaders from their residential trip to Ty'n-Y-Felin in Anglesey.

They have all grown in confidence having approached new challenges with determination and enthusiasm and enjoyed a memorable three days of organised activities. Following on from Moreton and Arley's successful visit, Dunham and Walton followed suit with a three day stay at the outward bound centre located in the village of Rhoscolyn .

We took 300 pupils for the three-day programme that included orienteering and problem solving, crabbing at

the creek, charity work and a visit to the island's Silver bay.

The students took part in a problem solving and orienteering task 'The Heist' whereby they had to solve who had stolen the Head teachers' items. This was organised and run by Anglesey Outdoors, who are based at Holyhead on Anglesey. They also tested their nerves as they climbed trees and painted t shirts to remember their visit, which they will hopefully keep as a souvenir.

Tynny is a superb purpose built activity holiday centre situated in 35 acres of land, with its own access to the inland sea or Cymryron straits.

Our students were a credit to themselves and to the school, the Anglesey Outdoors staff commented on how well behaved they had been - they really got stuck in and enjoyed themselves.

A very special thanks to all of the staff who accompanied each trip.

Mrs J Wagstaff



STUDENTS BEGIN TO PITCH IN!

Helping to create a lasting sports legacy for the whole community.

On Monday 9th October Lymm High school students saw the official launch of the school's 'Pitch In!' campaign during their morning assembly - the biggest fundraising campaign the school has seen in the last 20 years!

Students took part in a number of assemblies where they

learnt what to expect throughout the campaign, along with the technical aspects of what a 3G pitch can offer.

There were gasps in the audience when the target figure of £100,000 was revealed, but excitement soon filled the main hall at the prospect of all the fun

fundraising activities that would take place throughout the year to reach such an ambitious target.

Each tutor group has been challenged to raise at least £500 before the beginning of December, starting with a non-uniform day taking place on Thursday 12 October. This might sound like a lot, but it's

This might sound like a lot, but it's only about £16 per student.

This culminates with a huge sponsored 'Santa Dash' on the 1ST of December.

Students are being encouraged to organise a variety of fundraising events, with the only exception being cake sales.

The occasional cake sale will still be held, but these will be solely to raise money for all the charities that Lymm High School will continue to support.

Year 11 students have been set a particular challenge! Mr Thompson shocked the year group during their assembly by informing them that if they can raise an additional £500 before the half term break, then he will shave his head live on stage.

Keep checking this newsletter over the next few weeks for updates.

'There were gasps in the audience when the target figure of £100,000 was revealed!'

SANTA DASH

Our first major fundraising event is already planned for 4th December; we will be holding a huge, whole-school 'Santa Dash'!

Students will be able to wear Santa hats and other Christmas clothing and, come rain or shine, will take part in a mega obstacle course around the school fields. They will compete in tutor groups, with prizes for the fastest tutor group to get everybody around the course, as well as other prizes for various achievements, such as best dressed Santa.

Tutor groups have been set the challenge of raising £500 in time for the Santa dash. Students will be coming up with their own ideas for raising the money, but everyone will be looking for sponsorship for the Santa Dash itself.

Prizes will be available for all tutor groups who hit the target and for those who raise the most money overall. It promises to be a great deal of fun and, we hope, will provide a major boost for the 'Pitch In' campaign.



ENRICHMENT FAYRE FOR KS3

Enrichment opportunities for all as students sign up at the fayre!

On Tuesday we held an enrichment fair for Key Stage Three.

All students in years 7, 8 and 9 were given the opportunity to sign up for an activity that they would like to participate in this academic year.

There is a wide range of clubs and opportunities for students to get involved in. These include: rowing, chess, fashion, photography, comics, board games STEM, computing, philosophy and music.

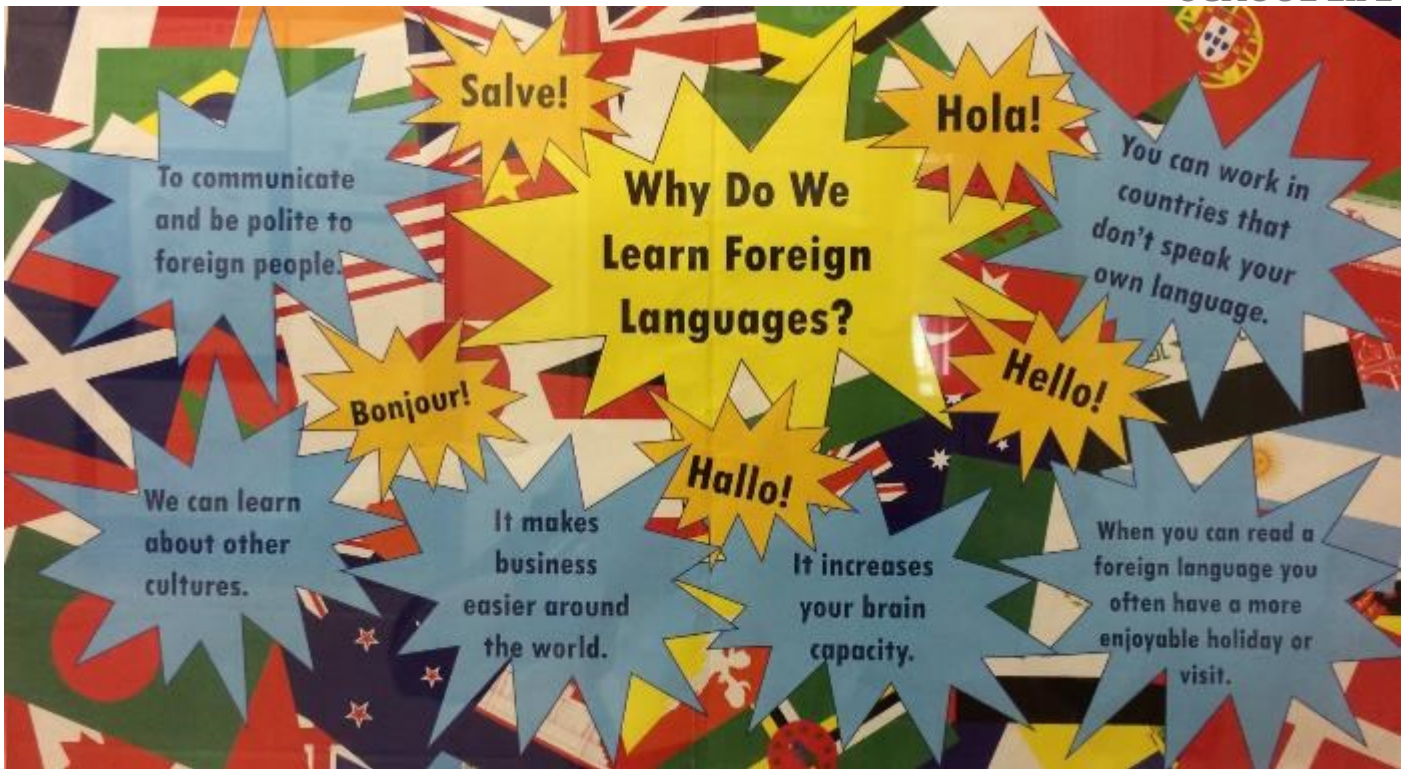
The clubs offer students the chance to try something new or improve their existing skills whilst making new friends.

The students really got involved and took advantage of the opportunities with many students enrolling for several clubs.

Some clubs have now started but students will be informed about the club's commencing via the student bulletin.

It is a very important part of our ethos that everybody takes part in our extra-curricular programme, so please do encourage your child to sign up for at least one club.



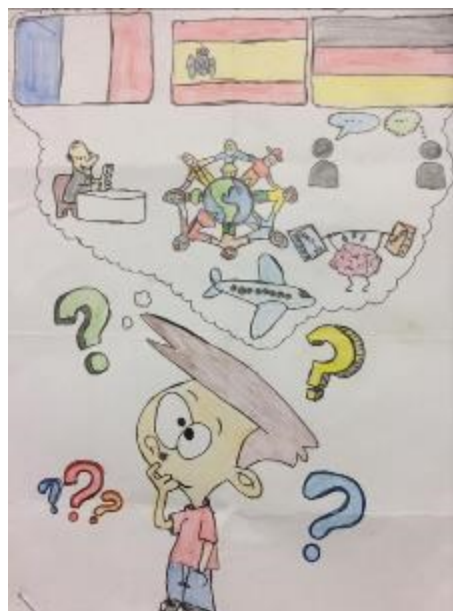


LANGUAGES WEEK AT LYMM HIGH SCHOOL

It was great to celebrate Languages Week at Lymm High School as part of European Day of Languages which is held annually on the 26th of September.

The students learnt about the importance of celebrating linguistic diversity and the numerous benefits of learning a foreign language, not just in terms of employability but also enhancing brain power to help learning across all areas of the curriculum.

There were lots of activities taking place across the week



including daily language quizzes, Spelling Bee competitions, Treasure Hunt and poster/artwork competition.

The canteen staff were



wonderful and worked hard to cook a delicious variety of European dishes throughout the week. Well done and thank you to everyone who took part!

It's all About STEM

WHAT IS STEM?

STEM brings together Science, Technology, Engineering and Mathematics with an aim of making links between the subjects you study at school and how they are applied in real life. STEM activities, workshops, competitions and trips offer you great opportunities to discover these subjects in action and hopefully have some fun along the way. Getting involved with STEM is a great way of enriching what you learn in the classroom.

Secondary Engineers Leaders Award

If you were an engineer, what would you do?

This is your opportunity to make a difference. Interview an engineer, identify an existing problem and 'engineer' a solution.

Registration is open online at:
<http://leadersaward.com/secondary/>

HIGHLIGHTED EVENTS

Every Day - Robots at Museum of Science and Industry

Every Day - Women of Science, Peoples History Museum

21st/22nd October - Game Lab, University of Salford at Media City

23rd October - Tomorrows World

Manchester Science Festival

Manchester Science Week is an annual celebration of all things science in the North West and it's the largest Science festival in the UK.

This year Manchester Science Week runs over half term from Thursday 19th until Sunday 29th October. There are lots of activities running at venues across Manchester that are suitable for all ages. For more information visit:

<http://www.manchestersciencefestival.com/>
Science may just surprise you....

USEFUL WEBSITES

Maths Revision

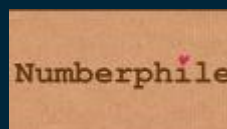


Khan Academy—An American based website with some excellent how to



Wolfram Alpha—Maths Search engine. When stuck with those difficult problems.

Maths Enrichment



For everything you didn't know about numbers...

THE LIFE PROGRAMME

The Life Programme has restarted this year with students in all year groups investigating, discussing and thinking about a wide range of life topics, based around four key areas: British Values; Health and Equality; Careers and Finance; and Sex and Relationships.

These are all areas that we passionately believe are essential for our young people to understand in order to have a happy and healthy future.

In the year 8 British Values session students wrote a pledge for allegiance to Britain with Ms McGahey.

The work of Joby Hassett was highlighted as particularly impressive and we would like to share his wonderful piece with you.

Well done Joby!

I pledge to respect my country,
I pledge to keep the peace,
We will not be divided,
We will never cease.

I pledge to respect others,
No matter what their faith,
They belong here as much as I do,
This is their home, their place.

The pigment in our skin,
Whichever god you think is above,
Whether in a wheel chair or walking,
We will show each other love.

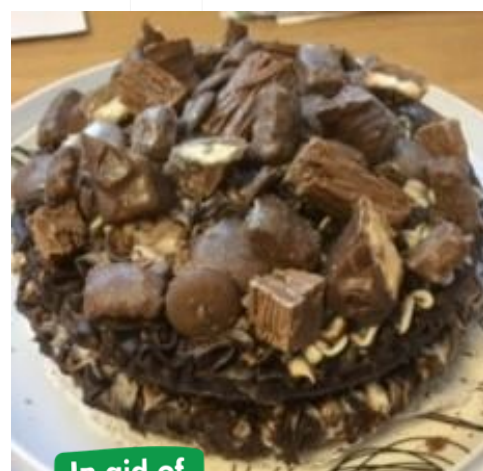
We are Britain,
We are one,
We are together,
We march on.

MACMILLAN BAKE SALE

The annual Inter-Hall MacMillan Cake Sale took place on Friday 6th October with halls going head to head throughout the day to raise the most money for Macmillan Cancer Support. As ever, our students excelled themselves and there was a wealth of cakes and bakes on offer during break time. We are still counting the proceeds

with more still to come in, and after a fantastic amount raised last year, we look forward to sending off another generous donation to Macmillan at the start of next week.

Many thanks to all students, who worked hard selling cakes on the day. Equally thanks to all of our generous staff and students who donated to this worthy cause.



In aid of
**WE ARE
MACMILLAN.
CANCER SUPPORT**

GOLDEN TICKET WINNERS

A huge congratulation to Matthew and Anna our first winners on this terms rewards pyramid. Both Anna and Matthew have been recognised for their great start to the school year.

Both have been rewarded with a £20 Amazon gift Voucher.

Watch out for more winners next week.



YEAR 11 REVISION ROOM

Are you worried about the amount of revision your child is completing? Is it a bit of a battle in the evenings? Does your child say they don't know how to revise?

If so, please encourage them to attend The Revision Room every Monday and Wednesday 3:10 – 4:45pm, starting on Wednesday 11th October in the Library. Snack and drink provided. Supervised by staff who will ensure they complete an hour and a half of good quality revision, and give advice on appropriate revision techniques such as creating a revision timetable or revision flashcards, and using past papers and mark schemes effectively. Students can also complete their daily 15 minutes of Tassomai during this session if they wish.

UPCOMING IMPORTANT DATES

Non Uniform Day
Thursday 12th October

**School Closure
INSET DAY**
Thursday 5th October

Half Term Break
Monday 23rd October

Y13 Parents Evening
Thursday 2nd November

Afritwin Quiz Night
Friday 3rd November

**Young Musician of the
Year Final**
Tuesday 7th November

Sixth Form Open Evening
Thursday 9th November

Les Miserables
Tuesday 28th November -
Friday 1st December

Santa Dash
Friday 1st December

 Follow us on
TWITTER
@LymmHighSchool